

640103

# Sub Roll Semolina 8" (95g) (1 x 40)

Sub Roll Semolina 1x

## PRODUCT DESCRIPTION

Ready-baked, ready-sliced white deli sub roll topped with semolina. Packed 5 x 8. Suitable for vegetarians and vegans. (1 x 40)

Brand	Central Foods Group Limited
Manufacturer Product Code	BFL3519
Product Type	Food
Product Category	Bread and Bread Products
Storage Type	Frozen
Erudus ID	d8cd16ef23164e2cacc33175c934c761
Specification Type	Legacy



Outer Case GTIN5022558000030



## INGREDIENTS

### Ingredient Declaration

Fortified **WHEAT** Flour (**WHEAT FLOUR**, Calcium Carbonate, Niacin, Iron, Thiamin), Water, Vegetable Oils (Rapeseed, Palm), Dextrose, Salt, Emulsifiers (Sodium Stearoyl-2-Lactylate, Mono- and Di-Glycerides of Fatty Acids), Flour Treatment Agent (Ascorbic Acid), Yeast, Durum **WHEAT** Semolina.

## ALLERGENS

Product Contains:

Celery/Celeriac	No
Cereals Containing Gluten	Yes
Barley	No
Oats	No
Rye	No
Wheat (including Spelt and Khorasan)	Yes
Gluten content <20ppm	No
Crustacea	No
Eggs	No
Fish	No
Lupin	No
Milk	No
Molluscs	No

Mustard	No
Nuts (Tree)	No
Almond nuts	No
Brazil nuts	No
Cashew nuts	No
Hazelnuts	No
Macadamia (Queensland) nuts	No
Pecan nuts	No
Pistachio nuts	No
Walnuts	No
Peanuts	No
Sesame Seeds	No
Soybeans	No
Sulphur Dioxide and Sulphites	No

### Additional Allergen Information

For allergens, including cereals containing gluten, see ingredients in CAPITALS.

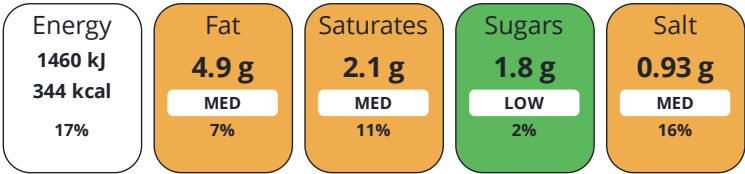
## DIET SUITABILITY

Suitable for Coeliacs	No
Kosher Diet	No
Vegan Diet	Suitable for

Halal Diet	No
Vegetarian Diet	Suitable for

NUTRITIONAL  
INFORMATION

Each 100g/ml portion contains:



of your reference intake.

Typical values per 100g/ml : Energy 344kcal / 1460kJ

Nutrient	per 100g/ml	RI per 100g/ml	per 95g/ml serving	RI per 95g/ml serving
Energy (kJ)	1460 kJ	17%	1387 kJ	17%
Energy (kcal)	344 kcal	17%	326.8 kcal	16%
Fat	4.9 g	7%	4.7 g	7%
of which Saturates	2.1 g	11%	2 g	10%
Carbohydrate	64.3 g	25%	61.1 g	24%
of which Sugars	1.8 g	2%	1.7 g	2%
Fibre	3.1 g		2.9 g	
Protein	9.4 g	19%	8.9 g	18%
Salt	0.93 g	16%	0.9 g	15%
Sodium	370 mg		351.5 mg	
Serving Size	95 g			

HANDLING &  
STORAGE  
INFORMATION

Directions For Use

From Frozen unless otherwise stated Remove product from outer packaging and allow to defrost at room temperature for approximately 2 hours. For best results allow 6 hours before use from defrost. Shelf life once defrosted: consume within 24 hours

Storage Instructions

Keep Frozen. Store at -18°C or below

ORIGIN

Product Country of OriginUnited Kingdom

Additional Origin Details

United Kingdom

Address

Central Foods Group Limited  
Maple Court  
Ash Lane  
Collingtree  
Northamptonshire  
NN4 0NB  
England

P: (Phone) 01604 858 522

Complaints Contact

Karen Wright  
Customer Care Admin Assistant  
kwright@centralfoods.co.uk

P: (Phone) 01604 878 299

Technical Contact

Chris Stobart  
Technical Manager  
technical@centralfoods.co.uk

P: (Phone) 01604 878 276

Commercial Contact

Oliver Sampson  
Managing Director  
osampson@centralfoods.co.uk

P: (Phone) 07715 073 273

CONTACT  
INFORMATION

The information on the [Erudus System](#) has been supplied by the manufacturers of the products and, whilst the owners of the Erudus System take steps to ensure the information is regularly updated, they give no warranty and no guarantee that the information is accurate. Product information and ingredients may change, please always read product labels carefully in addition to using the information provided by Erudus.

We do not accept liability for any inaccuracies or incorrect information contained on this site.  
Please visit <http://www.erudus.com/terms-and-conditions> for full terms and conditions.