

AERO Bubbly Bar Peppermint 24x36g

Aero Bubbly Bar Peppermint 36g 24x36g

PRODUCT DESCRIPTION

Smooth milk chocolate filled with peppermint flavoured bubbles. Milk chocolate contains milk solids 14% minimum in addition to cocoa butter.

Brand	Nestle UK
Manufacturer Product Code	12481261
Product Type	Food
Product Category	Confectionery
Storage Type	Ambient
Erudus ID	206b36abde4e412193230f59aebe8409
Specification Type	Legacy
Inner Component GTIN	7613287430946
Outer Case GTIN	7613287430953



INGREDIENTS

Ingredient Declaration

Sugar, Vegetable fats (Palm, Shea), Whole **MILK** powder, Cocoa butter, Whey powder (from **MILK**), Cocoa mass, Skimmed **MILK** powder, Butterfat (from **MILK**), Emulsifier (Lecithins), Natural flavouring, Colours (Copper complexes of chlorophyllins, Curcumin).

ALLERGENS

Product Contains:

Celery/Celeriac	No
Cereals Containing Gluten	No
Barley	No
Oats	No
Rye	No
Wheat (including Spelt and Khorasan)	No
Gluten content <20ppm	Yes
Crustacea	No
Eggs	No
Fish	No
Lupin	No
Milk	Yes
Molluscs	No

Mustard	No
Nuts (Tree)	May Contain
Almond nuts	May Contain
Brazil nuts	May Contain
Cashew nuts	May Contain
Hazelnuts	May Contain
Macadamia (Queensland) nuts	May Contain
Pecan nuts	May Contain
Pistachio nuts	May Contain
Walnuts	May Contain
Peanuts	May Contain
Sesame Seeds	No
Soybeans	May Contain
Sulphur Dioxide and Sulphites	No

Risk Source:

Additional Allergen Information

Contains: MILK. May Contain: PEANUTS, TREE NUTS and SOYA

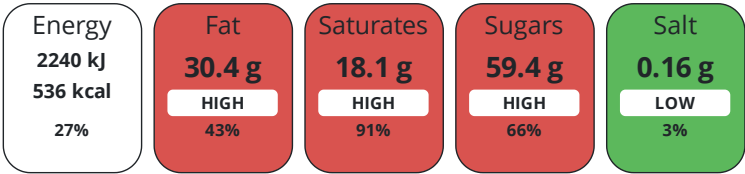
DIET SUITABILITY

Suitable for Coeliacs	Yes
Kosher Diet	No
Vegan Diet	No

Halal Diet	No
Vegetarian Diet	Suitable for

NUTRITIONAL
INFORMATION

Each 100g/ml portion contains:



of your reference intake.
Typical values per 100g/ml : Energy 536kcal / 2240kJ

Nutrient	per 100g/ml	RI per 100g/ml	per 36g/ml serving	RI per 36g/ml serving
Energy (kJ)	2240 kJ	27%	806.4 kJ	10%
Energy (kcal)	536 kcal	27%	193 kcal	10%
Fat	30.4 g	43%	10.9 g	16%
of which Saturates	18.1 g	91%	6.5 g	33%
Carbohydrate	59.7 g	23%	21.5 g	8%
of which Sugars	59.4 g	66%	21.4 g	24%
Fibre	1 g		0.4 g	
Protein	5.4 g	11%	1.9 g	4%
Salt	0.16 g	3%	0.1 g	2%
Serving Size	36 g			

HANDLING &
STORAGE
INFORMATION

Directions For Use

Ready to eat

Storage Instructions

Cool and dry

ORIGIN
CONTACT
INFORMATION

Product Country of Origin Czech Republic

Address

Nestle UK
Nestlé UK Ltd
PO Box 207
York
YO91 1WS
England

P: (Phone) 0800 00 00 30 (UK)

Complaints Contact

consumer.services@uk.nestle.com

P: (Phone) 0800 00 00 30 (UK)

The information on the [Erudus System](#) has been supplied by the manufacturers of the products and, whilst the owners of the Erudus System take steps to ensure the information is regularly updated, they give no warranty and no guarantee that the information is accurate. Product information and ingredients may change, please always read product labels carefully in addition to using the information provided by Erudus.

