

710093

1105 Baked Lotus Biscoff Cheesecake Pre-cut 14 Portion

Baked Lotus Biscoff Cheesecake

PRODUCT DESCRIPTION

A crunchy Biscoff biscuit base with a layer of Biscoff spread and a rich smooth cheesecake, finished with Biscoff spread, crumble and dark chocolate drizzle

Brand	Eatons Patisserie
Manufacturer Product Code	BLBCC14
Product Type	Food
Product Category	Desserts
Storage Type	Frozen
Erudus ID	b908e9622b8b4ca39daad747d9545f98
Specification Type	Bakery Products



Outer Case GTIN

5060622440337



INGREDIENTS

Ingredient Declaration
Full Fat Soft Cheese (37%) (Skimmed **MILK**, Cream (**MILK**), Lactic Cultures, Salt, **MILK** Protein, Preservative (Potassium Sorbate E202), Caramelised Biscuit (20%) (**WHEAT** Flour, Sugar, Vegetable Oil (Palm, Rapeseed), Candy Sugar Syrup, Raising Agent (Sodium Hydrogen Carbonate E500ii), **SOYA** Flour, Salt, Cinnamon), Rapeseed Oil, Sugar, Emulsifier (**SOYA** Lecithin), Acidity Regulator (Citric Acid)., Pasteurised Free Range Whole **EGG**, Biscoff Crumb (14%) **WHEAT** Flour, Sugar, Vegetable Oil (Palm And Rapeseed), Candy Sugar Syrup, Raising Agent (E500ii Sodium Hydrogen Carbonate), **SOYA** Flour, Salt, Cinnamon, Sugar, Cream (**MILK**), Vegetable Oil (Palm & Rapeseed Oil), Water, Salt, Emulsifier (Distilled Monoglyceride E471), Flavouring, Colouring (Annatto Bixin E160b(i), Curcumin E100), Dark Chocolate [Cocoa Mass, Sugar, Cocoa Butter, Emulsifier (**SOYA** Lecithin), Natural Vanilla Flavouring].

ALLERGENS

Product Contains:

Celery/Celeriac	No
Cereals Containing Gluten	Yes
Barley	No
Oats	No
Rye	No
Wheat (including Spelt and Khorasan)	Yes
Crustacea	No
Eggs	Yes
Fish	No
Lupin	No
Milk	Yes
Molluscs	No

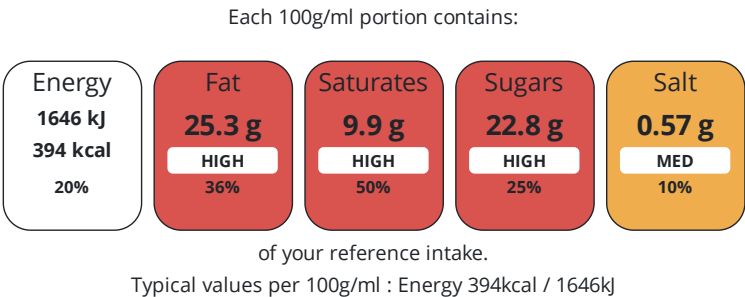
Mustard	No
Nuts (Tree)	May Contain
Almond nuts	May Contain
Brazil nuts	No
Cashew nuts	No
Hazelnuts	May Contain
Macadamia (Queensland) nuts	No
Pecan nuts	May Contain
Pistachio nuts	May Contain
Walnuts	May Contain
Peanuts	No
Sesame Seeds	No
Soybeans	Yes
Sulphur Dioxide and Sulphites	No

Risk Source:

DIET
SUITABILITY

Vegan Diet	No	Vegetarian Diet	Suitable for
Halal Diet	No	Kosher Diet	No

NUTRITIONAL
INFORMATION



Nutrient	per 100g	RI per 100g
Energy (kJ)	1646 kJ	20%
Energy (kcal)	394 kcal	20%
Fat	25.3 g	36%
of which Saturates	9.9 g	50%
Carbohydrate	33.6 g	13%
of which Sugars	22.8 g	25%
Fibre	0.4 g	
Protein	8 g	16%
Salt	0.57 g	10%

HANDLING &
STORAGE
INFORMATION

Directions For Use
Defrost: Remove all packaging and refrigerate for 12 hours. Shelf Life: After defrosting 2-4 days.
Storage Instructions
Keep frozen at or below -18°C, once defrosted store at 5°C ± 2°C

ORIGIN

Product Country of Origin	United Kingdom
---------------------------	----------------

CONTACT
INFORMATION

Origin of the Primary Ingredient	
Address	Technical Contact
Eatons Patisserie	Christopher Rushworth
17 Combe Road	Technical Manager
Torquay	qatech@eatonspatisserie.co.uk
Devon	
TQ2 8EJ	P: (Phone) 01626 361212 - Opt 3
England	
P: (Phone) 01626 361212	
Complaints Contact	Commercial Contact
Christopher Rushworth	Russell Eaton
QA Technical Manager	Managing Director
qatech@eatonspatisserie.co.uk	russell.eaton@eatonspatisserie.co.uk
P: (Phone) 01626 361212 - Opt 3	P: (Phone) 0782 5535543

The information on the [Erudus System](#) has been supplied by the manufacturers of the products and, whilst the owners of the Erudus System take steps to ensure the information is regularly updated, they give no warranty and no guarantee that the information is accurate. Product information and ingredients may change, please always read product labels carefully in addition to using the information provided by Erudus.

