

Supplier's Product Code :  
Product Added :  
Last Updated by Supplier :  
erudus id :

2248  
25 February 2021  
25 February 2021  
c0f24336c2c047c98ccd4040e4662ff2

The information on the [Erudus System](#) has been supplied by the manufacturers of the products and, whilst the owners of the Erudus System take steps to ensure the information is regularly updated, they give no warranty and no guarantee that the information is accurate. Product information and ingredients may change, please always read product labels carefully in addition to using the information provided by Erudus One.

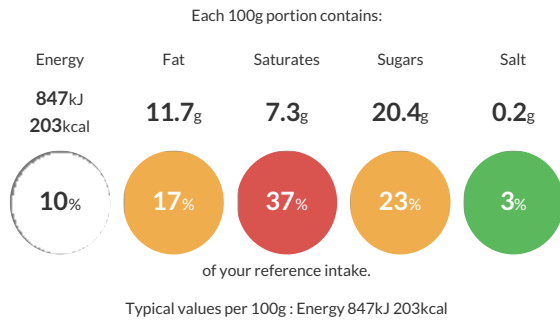
We do not accept liability for any inaccuracies or incorrect information contained on this site. Please visit <http://www.erudus.com/terms-and-conditions> for full terms and conditions.

## Dairy Vanilla Pod Ice Cream 4.75 Litre

Vanilla Dairy Ice Cream with Ground Vanilla Pod

Traded Unit GTIN: **5030210003558** Internal GTIN: **5030210003558** Supplier : **New Forest Ice Cream** Suppliers Product Code : **2248**

### Reference Intake



### Nutritional Information

Typical Values	Per 100g
Energy	847kJ 203kCal
Carbohydrates	20.4g
of which sugars	20.4g
Fat	11.7g
of which saturates	7.3g
Fibre	<0.5g
Protein	4.1g
Salt	0.2g

### Allergy Information

Key: **Contains** **May Contain**



**Allergen Statement**  
May contain soya, gluten

### Dietary Information

Key: **Suitable for**



### Ingredients

Whole MILK, double cream 18% from MILK, sugar, skimmed MILK powder, dextrose, emulsifier mono- and di-glycerides of fatty acids vegetable origin, stabilisers sodium alginate, guar gum, natural flavouring 0.66% contains mixture of natural flavouring substances and flavouring preparations, propylene glycol, water, ethyl alcohol, vanilla bean seeds (0.04%).