

Mini Savoury Tartlet selection x 75

Mini Savoury Tartlets Assortment

PRODUCT DESCRIPTION

ready to bake, frozen, selection of 5 flavours tartlets (garlic mushroom, ham & cheese, goat's cheese & tomato, salmon & dill, cauliflower & broccoli) - with bakeable tray

Brand	Delifrance (UK) Limited
Manufacturer Product Code	S9666
Product Type	Food
Product Category	Party Food
Storage Type	Frozen
Erudus ID	b787fc707a6d437b9241869d99b034ff
Specification Type	Bakery Products



Outer Case GTIN3291811150795



INGREDIENTS

Ingredient Declaration

Salmon and dill mini tartlet (**wheat** flour, dairy cream (**milk**), **fish**: diced Atlantic **salmon** 17,8%, semi-skimmed **milk**, butter (**milk**), **eggs**, water, modified starch, salt, powdered **fish** and **fish** extract , dehydrated onions, dehydrated vegetables, spices and herbs, natural white wine flavouring, dill 0,1%, natural pepper flavouring, colour (E160a)).

Goat's **milk** cheese and tomato tartlet (**wheat** flour, goat's **milk** cheese 17,2%, semi-skimmed **milk**, butter (**milk**), **eggs**, tomatoes 8,1%, water, dairy cream (**milk**), basil, modified starch, salt, natural pepper flavouring, colour (E160a)).

Cauliflower and broccoli tartlet (**wheat** flour, cauliflowers 14,3%, semi-skimmed **milk**, butter (**milk**), Swiss Gruyere cheese (PDO) 10,7% (**milk**), broccoli 8,9%, **eggs**, water, dairy cream (**milk**), salt, modified starch, natural pepper flavouring, colour (E160a)).

Smoked lardons mini tartlet (**wheat** flour, semi-skimmed **milk**, **eggs**, pork smoked lardons 11,7% (pork belly, water, salt, glucose syrup, natural flavourings, spices extract, antioxidant (extracts of rosemary), starters), butter (**milk**), water, fromage blanc cheese (**milk**), dairy cream (**milk**), comté (PDO) cheese 3,2% (**milk**), modified starch, salt, natural pepper flavouring, colour (E160a), nutmeg).

Mushrooms mini tartlet (**wheat** flour, semi-skimmed **milk**, **eggs**, butter (**milk**), mushrooms 8,9%, dairy cream (**milk**), water, parsley, garlic powder, modified starch, salt, natural pepper flavouring, colour (E160a)).

ALLERGENS

Product Contains:

Celery/Celeriac	May Contain
Cereals Containing Gluten	Yes
Barley	No
Oats	No
Rye	No
Wheat (including Spelt and Khorasan)	Yes
Crustacea	May Contain
Eggs	Yes
Fish	Yes
Lupin	No
Milk	Yes
Molluscs	May Contain

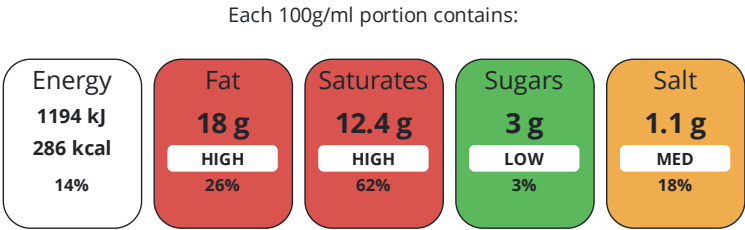
Mustard	May Contain
Nuts (Tree)	May Contain
Almond nuts	May Contain
Brazil nuts	No
Cashew nuts	No
Hazelnuts	May Contain
Macadamia (Queensland) nuts	No
Pecan nuts	May Contain
Pistachio nuts	May Contain
Walnuts	No
Peanuts	No
Sesame Seeds	No
Soybeans	May Contain
Sulphur Dioxide and Sulphites	No

Risk Source:

DIET
SUITABILITY

Vegan Diet	No	Vegetarian Diet	No
Halal Diet	No	Kosher Diet	No

NUTRITIONAL
INFORMATION



of your reference intake.
Typical values per 100g/ml : Energy 286kcal / 1194kJ

Nutrient	per 100g	RI per 100g	per 18g serving	RI per 18g serving
Energy (kJ)	1194 kJ	14%	214.9 kJ	3%
Energy (kcal)	286 kcal	14%	51.5 kcal	3%
Fat	18 g	26%	3.2 g	5%
of which Saturates	12.4 g	62%	2.2 g	11%
Carbohydrate	22 g	8%	4 g	2%
of which Sugars	3 g	3%	0.5 g	1%
Fibre	1.8 g		0.3 g	
Protein	8.2 g	16%	1.5 g	3%
Salt	1.1 g	18%	0.2 g	3%
Serving Size	18 g			

HANDLING &
STORAGE
INFORMATION

Directions For Use	Preheat the oven at 190°C for 10 to 15 minutes. Remove the film from the tray. Bake from frozen at 170-180°C for 20 to 25 minutes.
Storage Instructions	keep frozen do not refreeze once thawed

ORIGIN

Product Country of Origin	France
Additional Origin Details	Manufactured in France

CONTACT
INFORMATION

Origin of the Primary Ingredient	
Address	Delifrance (UK) Limited 17 Chartwell Drive Wigston Leicestershire LE18 2FL England
P: (Phone)	(0) 116 257 8253

The information on the [Erudus System](#) has been supplied by the manufacturers of the products and, whilst the owners of the Erudus System take steps to ensure the information is regularly updated, they give no warranty and no guarantee that the information is accurate. Product information and ingredients may change, please always read product labels carefully in addition to using the information provided by Erudus.

