

Pepsi Strawberries & Cream Zero Sugar CANS 24 X 330ml

Carbonated Low Calorie Strawberry And Vanilla Cola Flavoured Soft Drink With Sweeteners 24x

PRODUCT DESCRIPTION
Suitable for vegetarians and vegans

Brand	Britvic Soft Drinks Limited
Manufacturer Product Code	290322
Manufacturer Version	v1
Number	
Effective Date	Jan 16, 2025
Product Type	Drink
Product Category	Carbonated & Soft Drinks
Storage Type	Ambient
Erudus ID	eed48cfac1f54f10a05ec012de39fe12
Specification Type	Drinks
Inner Component GTIN	4062139018321
Outer Case GTIN	04062139018314



INGREDIENTS

Ingredient Declaration
Carbonated Water, Colour (E150d), Flavourings (including Caffeine), Acid (Phosphoric Acid), Sweeteners (Aspartame, Acesulfame K, Sucralose), Thickener (Pectin), Acidity Regulator (Sodium Citrate), Preservative (Potassium Sorbate). **Contains a Source of Phenylalanine.**

ALLERGENS

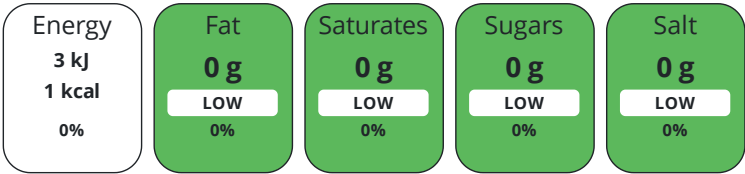
Product Contains:			
Celery/Celeriac	No	Mustard	No
Cereals Containing Gluten	No	Nuts (Tree)	No
Barley	No	Almond nuts	No
Oats	No	Brazil nuts	No
Rye	No	Cashew nuts	No
Wheat (including Spelt and Khorasan)	No	Hazelnuts	No
Crustacea	No	Macadamia (Queensland) nuts	No
Eggs	No	Pecan nuts	No
Fish	No	Pistachio nuts	No
Lupin	No	Walnuts	No
Milk	No	Peanuts	No
Molluscs	No	Sesame Seeds	No
		Soybeans	No
		Sulphur Dioxide and Sulphites	No

DIET SUITABILITY

Vegan Diet	Suitable for	Vegetarian Diet	Suitable for
Halal Diet	No	Kosher Diet	No

NUTRITIONAL
INFORMATION AS
SOLD

Each 100g/ml portion contains:



of your reference intake.

Typical values per 100g/ml : Energy 1kcal / 3kJ

Nutrient	per 100ml	RI per 100ml
Energy (kJ)	3 kJ	0%
Energy (kcal)	0.6 kcal	0%
Fat	0 g	
of which Saturates	0 g	
of which Mono-unsaturates	0 g	
of which Polyunsaturates	0 g	
Carbohydrate	0 g	
of which Sugars	0 g	
Protein	0 g	
Salt	0 g	
Sodium	< 0.01 mg	

NUTRITIONAL
INFORMATION AS
PREPARED

Nutrient	per 100g/ml prepared	RI per 100g/ml prepared
Energy (kcal)		

HANDLING &
STORAGE
INFORMATION

Directions For Use

Ready to drink

Storage Instructions

Store in a cool and dry place

ORIGIN

Product Country of Origin United Kingdom

Origin of the Primary Ingredient

SAFETY &
WARNINGS

Product Health Warning

Contains caffeine

CONTACT
INFORMATION

Address

Britvic Soft Drinks Limited
Breakspear Park
Breakspear Way
Hemel Hempstead
Hertfordshire
HP2 4TZ
United Kingdom

Technical Contact

Nikki Burton
Technical Specifications Manager
TechnicalInformationRequests@britvic.com

P: (Phone) +44 (0) 7736747481

The information on the [Erudus System](#) has been supplied by the manufacturers of the products and, whilst the owners of the Erudus System take steps to ensure the information is regularly updated, they give no warranty and no guarantee that the information is accurate. Product information and ingredients may change, please always read product labels carefully in addition to using the information provided by Erudus.

We do not accept liability for any inaccuracies or incorrect information contained on this site.
Please visit <http://www.erudus.com/terms-and-conditions> for full terms and conditions.