

Red Cherry Fruit Filling 2.5kg

Red Cherry Fruit Filling 1x

PRODUCT DESCRIPTION
Whole and broken red cherries in a thick gel.

Manufacturer Product Code	ITEM-0519
Product Type	Food
Product Category	Bakery - General
Storage Type	Ambient
Erudus ID	a2f4be702632404681cdb9d3a7a61873
Specification Type	Legacy

Inner Component GTIN	5060145440623
----------------------	---------------



INGREDIENTS

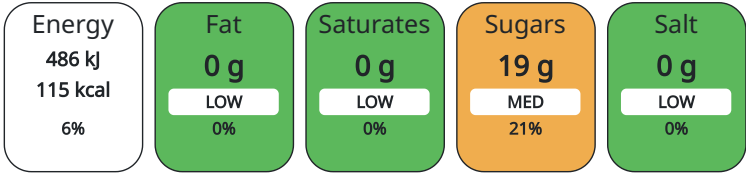
Ingredient Declaration
Cherries (38%), Water, Sugar, Modified Starch, Acidity Regulator: Citric Acid., Natural Flavouring, Preservative: Potassium Sorbate.

ALLERGENS	<i>Product Contains:</i>	
	Celery/Celeriac	No
	Cereals Containing Gluten	No
	Barley	No
	Oats	No
	Rye	No
	Wheat (including Spelt and Khorasan)	No
	Crustacea	No
	Eggs	No
	Fish	No
	Lupin	No
	Milk	No
	Molluscs	No
	Mustard	No
	Nuts (Tree)	No
	Almond nuts	No
	Brazil nuts	No
	Cashew nuts	No
	Hazelnuts	No
	Macadamia (Queensland) nuts	No
	Pecan nuts	No
	Pistachio nuts	No
	Walnuts	No
	Peanuts	No
	Sesame Seeds	No
	Soybeans	No
	Sulphur Dioxide and Sulphites	No

DIET SUITABILITY	Suitable for Coeliacs	Yes
	Kosher Diet	No
	Vegan Diet	Suitable for
	Halal Diet	No
	Vegetarian Diet	Suitable for

NUTRITIONAL
INFORMATION

Each 100g/ml portion contains:



of your reference intake.

Typical values per 100g/ml : Energy 115kcal / 486kJ

Nutrient	per 100g/ml	RI per 100g/ml
Energy (kJ)	486 kJ	6%
Energy (kcal)	115 kcal	6%
Fat	0 g	
of which Saturates	0 g	
Carbohydrate	28.5 g	11%
of which Sugars	18.9 g	21%
Fibre	0.7 g	
Protein	0.3 g	1%
Salt	0 g	

HANDLING &
STORAGE
INFORMATION

Directions For Use

Product can be used straight from the unit

Storage Instructions

Stored at ambient temperature when unopened. Once opened the product is to be stored below 5°C and used within 7 days

ORIGIN

Product Country of Origin United Kingdom

Additional Origin Details

CONTACT
INFORMATION

Address

Zeelandia UK Limited
Unit 18
Lockett Road
WN4 8DE
Ashton In Makerfield
Lancashire
England

helen.benson@zeelandia.co.uk
01942 295930

Technical

Becky Marsh
becky.marsh@zeelandia.co.uk
01942 295930
Technical Manager

Commercial

Andy Smith
andrew.smith@flemings.org.uk
07551153493
Sales Manager

Complaints

Craig Philpot
craig.philpot@zeelandia.co.uk
01942 295930
Assistant Technical Manager

The information on the [Erudus System](#) has been supplied by the manufacturers of the products and, whilst the owners of the Erudus System take steps to ensure the information is regularly updated, they give no warranty and no guarantee that the information is accurate. Product information and ingredients may change, please always read product labels carefully in addition to using the information provided by Erudus.

We do not accept liability for any inaccuracies or incorrect information contained on this site.
Please visit <http://www.erudus.com/terms-and-conditions> for full terms and conditions.