

Changed May 21, 2025 10:09

Reviewed May 21, 2025 10:09

Erudus ID 4d277816bb404b93acb1c0c8aae4ccf5

Version 3.1

Status Published

Luxury Millionaire Triangles x 12

Luxury Millionaire Triangle

PRODUCT DESCRIPTION

Thick luxury caramel on a shortbread base topped with milk chocolate.

Brand	CAKE
Manufacturer	Lomond Fine Foods Ltd
Manufacturer Product Code	69420
Product Type	Food
Product Category	Traybake
Storage Type	Frozen
Erudus ID	4d277816bb404b93acb1c0c8aae4ccf5
Specification Type	Bakery Products



Inner Component GTIN	5060268090880
Outer Case GTIN	15060268091082



INGREDIENTS

Ingredient Declaration

Luxury Caramel (35%) (Sugar, Glucose Syrup, Sweetened Condensed Milk (**MILK**, Sugar), Water, Unsalted Butter (**MILK**), Golden Syrup (Partially Inverted Refiners' Syrup), Palm Oil, Salt, Emulsifiers (Rapeseed Lecithin, Sunflower Lecithin, Sorbitan Monostearate), Natural Flavouring), Wheat Flour (**WHEAT** Flour, Calcium Carbonate, Iron, Niacin, Thiamin), Milk Chocolate (18%) (Sugar, Cocoa Butter, Whole **MILK** Powder, Cocoa Mass, Emulsifier (**SOYA** Lecithin), Natural Vanilla Flavouring), Butter (Butter (Cream (**MILK**)), Salt, Water), Caster Sugar.

ALLERGENS

Product Contains:

Celery/Celeriac	No	Mustard	No
Cereals Containing Gluten	Yes	Nuts (Tree)	May Contain
Barley	May Contain	Almond nuts	May Contain
Oats	May Contain	Brazil nuts	No
Rye	No	Cashew nuts	No
Wheat (including Spelt and Khorasan)	Yes	Hazelnuts	May Contain
Crustacea	No	Macadamia (Queensland) nuts	No
Eggs	May Contain	Pecan nuts	No
Fish	No	Pistachio nuts	May Contain
Lupin	No	Walnuts	May Contain
Milk	Yes	Peanuts	No
Molluscs	No	Sesame Seeds	No
		Soybeans	Yes
		Sulphur Dioxide and Sulphites	May Contain

Risk Source:

Barley (Risk Source)	Line	Oats (Risk Source)	Line
Eggs (Risk Source)	Line	Tree Nuts (Risk Source)	Line
Almond nuts (Risk Source)	Line	Hazelnuts (Risk Source)	Line
Pistachio nuts (Risk Source)	Line	Walnuts (Risk Source)	Line
Sulphur Dioxide and Sulphites (Risk Source)	Line		

Allergen Statement On Pack

Allergy Advice: For allergens, including cereals containing gluten, see ingredients in bold. May also contain traces of gluten (oats and barley), egg, sulphites and tree nuts

Additional Allergen Information

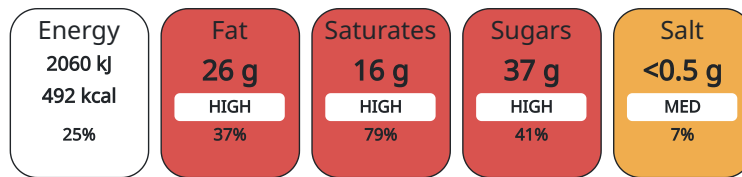
Allergy Advice: For allergens, including cereals containing gluten, see ingredients in bold. May also contain traces of gluten (oats and barley), egg, sulphites and tree nuts

DIET SUITABILITY

Vegan Diet	No	Vegetarian Diet	Suitable for
Halal Diet	No	Kosher Diet	No

NUTRITIONAL INFORMATION AS SOLD

Each 100g/ml portion contains:



of your reference intake.

Typical values per 100g/ml : Energy 492kcal / 2060kJ

Nutrient	per 100g	RI per 100g	per 85g serving	RI per 85g serving
Energy (kJ)	2060 kJ	25%	1751	21%
Energy (kcal)	492 kcal	25%	418.2	21%
Fat	25.8 g	37%	21.93 g	31%
of which Saturates	15.8 g	79%	13.43 g	67%
Carbohydrate	60.3 g	23%	51.26 g	20%
of which Sugars	36.5 g	41%	31.03 g	34%
Fibre	1.5 g		1.28 g	
Protein	4 g	8%	3.4 g	7%
Salt	0.44 g	7%	0.37 g	6%

Serving Size 85 g

HANDLING & STORAGE INFORMATION

Directions For Use

Ambient: Store in a cool, dry place. Store unopened in a cool dry place for up to 90 days. Eat within 5 days of opening.

Storage Instructions

Storage: Store at -18°C or colder. Defrost for 6 - 8 hours before serving. Ambient: Store in a cool, dry place.

ORIGIN

Product Country of Origin	Scotland
Additional Origin Details	
Packed in Scotland	
Origin of the Primary Ingredient	United Kingdom

CONTACT
INFORMATION

Address

Lomond Fine Foods Ltd
75 Keppochhill Drive
70 Spiersbridge Road, Thornliebank, Glasgow, G46 7SN
G21 1HX
Springburn
Glasgow
Scotland

anne@lomond.lfs.com
0141 353 6777

The information on the [Erudus System](#) has been supplied by the manufacturers of the products and, whilst the owners of the Erudus System take steps to ensure the information is regularly updated, they give no warranty and no guarantee that the information is accurate. Product information and ingredients may change, please always read product labels carefully in addition to using the information provided by Erudus.

We do not accept liability for any inaccuracies or incorrect information contained on this site.
Please visit <http://www.erudus.com/terms-and-conditions> for full terms and conditions.