

# Skittles Fruits Sweets Bag 45g

Skittles Fruits Sweets Bag 45g 36x0.05kg

## PRODUCT DESCRIPTION

Chewy /Toffee Candy

Brand	Mars
Manufacturer Product Code	368598
Product Type	Food
Product Category	Confectionery
Storage Type	Ambient
Erudus ID	7a2f6b4e69d243dbb545458becaadd11
Specification Type	Generic
Inner Component GTIN	4009900522120
Outer Case GTIN	4009900522113

## INGREDIENTS

### Ingredient Declaration

Sugar, Glucose Syrup, Palm Fat, Acids Citric Acid, Malic Acid, Dextrin, Maltodextrin, Flavourings, Modified Starch, Colours E162, E163, E170, E160a, E100, E132, E133, Acidity Regulator Trisodium Citrate, Glazing Agent Carnauba Wax

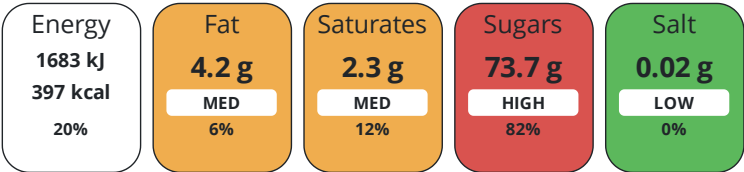
## ALLERGENS

Product Contains:

Celery/Celeriac	No	Mustard	No
Cereals Containing Gluten	No	Nuts (Tree)	No
Barley	No	Almond nuts	No
Oats	No	Brazil nuts	No
Rye	No	Cashew nuts	No
Wheat (including Spelt and Khorasan)	No	Hazelnuts	No
Crustacea	No	Macadamia (Queensland) nuts	No
Eggs	No	Pecan nuts	No
Fish	No	Pistachio nuts	No
Lupin	No	Walnuts	No
Milk	No	Peanuts	No
Molluscs	No	Sesame Seeds	No
		Soybeans	No
		Sulphur Dioxide and Sulphites	No

## NUTRITIONAL INFORMATION AS SOLD

Each 100g/ml portion contains:



of your reference intake.

Typical values per 100g/ml : Energy 397kcal / 1683kJ

	<table><tr><th>Nutrient</th><th>per 100g</th><th>RI per 100g</th></tr><tr><td>Energy (kJ)</td><td>1683 kJ</td><td>20%</td></tr><tr><td>Energy (kcal)</td><td>397 kcal</td><td>20%</td></tr><tr><td>Fat</td><td>4.2 g</td><td>6%</td></tr><tr><td>of which Saturates</td><td>2.3 g</td><td>12%</td></tr><tr><td>Carbohydrate</td><td>89.1 g</td><td>34%</td></tr><tr><td>of which Sugars</td><td>73.7 g</td><td>82%</td></tr><tr><td>Protein</td><td>0 g</td><td></td></tr><tr><td>Salt</td><td>0.02 g</td><td>0%</td></tr></table>		Nutrient	per 100g	RI per 100g	Energy (kJ)	1683 kJ	20%	Energy (kcal)	397 kcal	20%	Fat	4.2 g	6%	of which Saturates	2.3 g	12%	Carbohydrate	89.1 g	34%	of which Sugars	73.7 g	82%	Protein	0 g		Salt	0.02 g	0%
Nutrient	per 100g	RI per 100g																											
Energy (kJ)	1683 kJ	20%																											
Energy (kcal)	397 kcal	20%																											
Fat	4.2 g	6%																											
of which Saturates	2.3 g	12%																											
Carbohydrate	89.1 g	34%																											
of which Sugars	73.7 g	82%																											
Protein	0 g																												
Salt	0.02 g	0%																											
HANDLING & STORAGE INFORMATION	<div>Directions For Use</div> <div>Ready to eat</div> <div>Storage Instructions</div> <div>Keep cool and dry</div>																												
ORIGIN	<div>Product Country of Origin</div> <div>Czech Republic</div> <div>Origin of the Primary Ingredient</div>																												
SAFETY & WARNINGS CONTACT INFORMATION	<div>Address</div> <div>Technical Contact</div> <div>Charlie Perry</div> <div>charlie.perry@effem.com</div>																												
	<div>Mars</div> <div>3d Dundee Road</div> <div>Slough</div> <div>SL1 4LG</div> <div>United Kingdom</div>																												

The information on the [Erudus System](#) has been supplied by the manufacturers of the products and, whilst the owners of the Erudus System take steps to ensure the information is regularly updated, they give no warranty and no guarantee that the information is accurate. Product information and ingredients may change, please always read product labels carefully in addition to using the information provided by Erudus.

We do not accept liability for any inaccuracies or incorrect information contained on this site.  
Please visit <http://www.erudus.com/terms-and-conditions> for full terms and conditions.