

690030

# SOPHIE'S ANGEL SPARKLE CAKE

Sophie's Angel Sparkle Cake (1x14 Pre-portioned) 1x1.9kg

PRODUCT DESCRIPTION

A three-layer moist sponge cake comprising of marble layers sandwiched one with strawberry jam and other with sweet buttercream. Smothered in buttercream and finished with a sprinkling of colourful crunchy spheres. This gateau is pre-portioned into 14 portions and packed 1 gateau per outer.

Brand	C D T Sidoli (Welshpool) Limited
Manufacturer Product Code	59115
Product Type	Food
Product Category	Desserts
Storage Type	Frozen
Erudus ID	4419006273ad4b84a3ca0628d5d8b75b
Specification Type	Bakery Products
Outer Case GTIN	5015091591158



INGREDIENTS

Ingredient Declaration

Sugar, WHEAT flour (with added calcium, niacin, iron, thiamin), EGG, rapeseed oil, sugar strands (sugar, glucose syrup, water, glazing agent (shellac), red beetroot concentrate, coconut oil, colours (anthocyanin, curcumin)), butter (MILK), margarine (palm oil, rapeseed oil, water, emulsifier (mono- and diglycerides of fatty acids), natural flavouring), strawberry jam (5%) (glucose-fructose syrup, strawberries, sugar, gelling agent (pectins), colour (anthocyanin), acidity regulators (sodium citrates, citric acid), natural flavouring), humectant (glycerine), raising agents (disodium diphosphates, sodium bicarbonate), modified maize starch, colours (curcumin, carmine), natural flavouring.

Ingredient Statements

Made in a factory that also handles the following allergen: Nuts

ALLERGENS

Product Contains:

Celery/Celeriac	No
Cereals Containing Gluten	Yes
Barley	May Contain
Oats	May Contain
Rye	No
Wheat (including Spelt and Khorasan)	Yes
Crustacea	No
Eggs	Yes
Fish	No
Lupin	No
Milk	Yes
Molluscs	No

Mustard	No
Nuts (Tree)	May Contain
Almond nuts	May Contain
Brazil nuts	No
Cashew nuts	No
Hazelnuts	May Contain
Macadamia (Queensland) nuts	No
Pecan nuts	May Contain
Pistachio nuts	May Contain
Walnuts	May Contain
Peanuts	No
Sesame Seeds	No
Soybeans	No
Sulphur Dioxide and Sulphites	No

DIET  
SUITABILITY

NUTRITIONAL  
INFORMATION

Risk Source:

Barley (Risk Source)	Factory
Tree Nuts (Risk Source)	Factory
Hazelnuts (Risk Source)	Factory
Pistachio nuts (Risk Source)	Factory

Oats (Risk Source)	Factory
Almond nuts (Risk Source)	Factory
Pecan nuts (Risk Source)	Factory
Walnuts (Risk Source)	Factory

Allergen Statement On Pack

Made in a factory that also handles the following allergen: Nuts

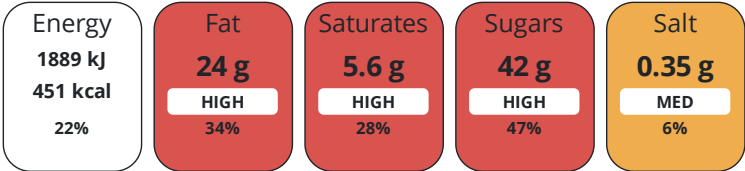
Additional Allergen Information

MADE IN A FACTORY THAT ALSO HANDLES THE FOLLOWING ALLERGEN: NUTS

Vegan Diet	No
Halal Diet	No

Vegetarian Diet	No
Kosher Diet	No

Each 100g/ml portion contains:



of your reference intake.

Typical values per 100g/ml : Energy 451kcal / 1889kJ

Nutrient	per 100g	RI per 100g	per 135g serving	RI per 135g serving
Energy (kJ)	1889 kJ	22%	2550.2 kJ	30%
Energy (kcal)	451 kcal	23%	608.9 kcal	30%
Fat	24 g	34%	32.4 g	46%
of which Saturates	5.6 g	28%	7.6 g	38%
Carbohydrate	56 g	22%	75.6 g	29%
of which Sugars	42 g	47%	56.7 g	63%
Fibre	0.7 g		0.9 g	
Protein	3.3 g	7%	4.5 g	9%
Salt	0.35 g	6%	0.5 g	8%
Serving Size	135 g			
Number of Servings	14 Servings			

Source of Nutritional Information      Calculation from known/accepted datasets

Directions For Use

Handling Instructions Defrost prior to serving. Keep refrigerated once defrosted and for best results keep covered. Use within 72 hours of defrost. Do not re-freeze, once defrosted. Defrosting Instructions Whole: Remove all packaging, including the cake board, place on a serving platter, cover and defrost under refrigeration (8°C or below), for approximately 8 hours. Portion: Remove a portion from frozen, place on a plate, cover and defrost under refrigeration (8°C or below), for approximately 2 hours

Storage Instructions

At or below minus 18°C (0°F)

HANDLING &  
STORAGE  
INFORMATION

ORIGIN

Product Country of Origin	United Kingdom
Additional Origin Details	N/A
Origin of the Primary Ingredient	

CONTACT  
INFORMATION

Address

C D T Sidoli (Welshpool) Limited  
Henfaes Lane  
Welshpool  
Powys  
SY21 7BE  
Wales

P: (Phone) 01938 555234

Complaints Contact

Hera Gottschalk  
Customers Service  
customer\_service@sidoli.co.uk

P: (Phone) 01935 555234

Technical Contact

Michele Fischetti  
Technical Manager  
mfischetti@sidoli.co.uk

P: (Phone) 01938 555234

Commercial Contact

Lorna Gries  
Sales Manager  
lgries@sidoli.co.uk

P: (Phone) 01938 555234

The information on the [Erudus System](#) has been supplied by the manufacturers of the products and, whilst the owners of the Erudus System take steps to ensure the information is regularly updated, they give no warranty and no guarantee that the information is accurate. Product information and ingredients may change, please always read product labels carefully in addition to using the information provided by Erudus.

We do not accept liability for any inaccuracies or incorrect information contained on this site.  
Please visit <http://www.erudus.com/terms-and-conditions> for full terms and conditions.