

Riverdene Sliced Jalapeno Peppers 3.0kg

Green Jalapeno Pepper Slices 6x3kg

PRODUCT DESCRIPTION

Canned Sliced Green Jalapeno Peppers

Brand	Martin Mathew & Co Ltd
Manufacturer Product Code	A49527
Manufacturer Version Number	2
Product Type	Food
Product Category	Fruit - Canned
Storage Type	Ambient
Erudus ID	9311618220f144ba9aaa0d156df0a9b8
Specification Type	Fruit and Vegetables
Inner Component GTIN	5017482002854
Outer Case GTIN	15017482002851



INGREDIENTS

Ingredient Declaration

Green Jalapeno Peppers, Water, Vinegar, Salt, Citric acid, Firming agent: Calcium Chloride

ALLERGENS

Product Contains:

Celery/Celeriac	No
Cereals Containing Gluten	No
Barley	No
Oats	No
Rye	No
Wheat (including Spelt and Khorasan)	No
Crustacea	No
Eggs	No
Fish	No
Lupin	No
Milk	No
Molluscs	No

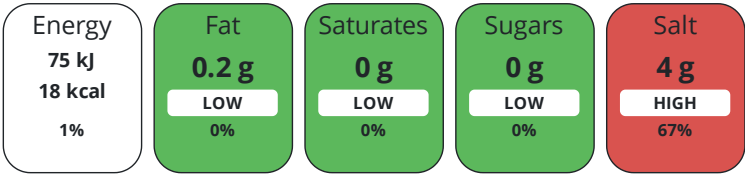
Mustard	No
Nuts (Tree)	No
Almond nuts	No
Brazil nuts	No
Cashew nuts	No
Hazelnuts	No
Macadamia (Queensland) nuts	No
Pecan nuts	No
Pistachio nuts	No
Walnuts	No
Peanuts	No
Sesame Seeds	No
Soybeans	No
Sulphur Dioxide and Sulphites	No

DIET SUITABILITY

Vegan Diet	Suitable for
Halal Diet	Suitable for

Vegetarian Diet	Suitable for
Kosher Diet	Suitable for

Each 100g/ml portion contains:



of your reference intake.

Typical values per 100g/ml : Energy 18kcal / 75kJ

Nutrient	per 100g	RI per 100g	per 50g serving	RI per 50g serving
Energy (kJ)	75 kJ	1%	37.5	0%
Energy (kcal)	18 kcal	1%	9	0%
Fat	0.2 g	0%	0.1 g	0%
of which Saturates	0 g		0 g	
of which Mono-unsaturates	< 0.1 g		0.05 g	
of which Polyunsaturates	< 0.1 g		0.05 g	
Carbohydrate	2.3 g	1%	1.15 g	0%
of which Sugars	0 g		0 g	
Fibre	1 g		0.5 g	
Protein	2.1 g	4%	1.05 g	2%
Salt	4 g	67%	2 g	33%
Serving Size	50 g			

HANDLING &
STORAGE
INFORMATION

Directions For Use

Ready for use from can

Storage Instructions

Dry ambient

Storage Instructions After Opening

After opening should be kept refrigerated in a non-metallic container and consumed within 2 days.

ORIGIN

Product Country of Origin Turkey

Origin of the Primary Ingredient

SAFETY &
WARNINGS
CONTACT
INFORMATION

Address

Martin Mathew & Co Ltd
50a St Andrew Street
Hertford
Herts
SG14 1JA
United Kingdom

P: (Phone) 01992641641

The information on the [Erudus System](#) has been supplied by the manufacturers of the products and, whilst the owners of the Erudus System take steps to ensure the information is regularly updated, they give no warranty and no guarantee that the information is accurate. Product information and ingredients may change, please always read product labels carefully in addition to using the information provided by Erudus.

