

Monster Energy Ultra Peachy Keen 500ml x12

Monster Energy Ultra Peachy Keen 12x0.52kg

PRODUCT DESCRIPTION

Monster Energy Ultra Peachy Keen 500ml x12 Can

| | |
|---------------------------|----------------------------------|
| Brand | Coca-Cola |
| Manufacturer Product Code | 641828 |
| Product Type | Drink |
| Product Category | Drinks - General |
| Storage Type | Ambient |
| Erudus ID | bbe48052806349fba91ae11869006896 |
| Specification Type | Drinks |
| Inner Component GTIN | 05060947545601 |
| Outer Case GTIN | 05060947545618 |
| Pallet GTIN | 05060947545625 |

INGREDIENTS

Ingredient Declaration
Carbonated Water, Acid (Citric Acid), Taurine (0.4%), Acidity Regulator (Sodium Citrates), Maltodextrin, Panax Ginseng Root Extract (0.08%), Flavourings, Preservatives (Potassium Sorbate, Sodium Benzoate), Sweeteners (Sucralose, Acesulfame K), Caffeine (0.03%), Vegetable Oils (Coconut, Rapeseed), L-Carnitine L-Tartrate (0.015%), Modified Starch, Vitamins (B3, B5, B6, B12), Sodium Chloride, Guarana Seed Extract (0.002%) Inositol, Colours (E102, E110).

ALLERGENS

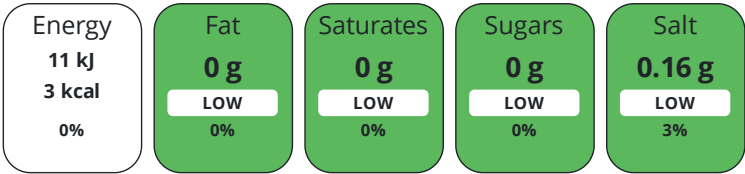
Product Contains:

| | |
|--------------------------------------|----|
| Celery/Celeriac | No |
| Cereals Containing Gluten | No |
| Barley | No |
| Oats | No |
| Rye | No |
| Wheat (including Spelt and Khorasan) | No |
| Crustacea | No |
| Eggs | No |
| Fish | No |
| Lupin | No |
| Milk | No |
| Molluscs | No |

| | |
|-------------------------------|----|
| Mustard | No |
| Nuts (Tree) | No |
| Almond nuts | No |
| Brazil nuts | No |
| Cashew nuts | No |
| Hazelnuts | No |
| Macadamia (Queensland) nuts | No |
| Pecan nuts | No |
| Pistachio nuts | No |
| Walnuts | No |
| Peanuts | No |
| Sesame Seeds | No |
| Soybeans | No |
| Sulphur Dioxide and Sulphites | No |

NUTRITIONAL
INFORMATION AS
SOLD

Each 100g/ml portion contains:



of your reference intake.

Typical values per 100g/ml : Energy 3kcal / 11kJ

| Nutrient | per 100ml | RI per 100ml |
|--------------------|-----------|--------------|
| Energy (kJ) | 11 kJ | 0% |
| Energy (kcal) | 3 kcal | 0% |
| Fat | 0 g | |
| of which Saturates | 0 g | |
| Carbohydrate | 0.7 g | 0% |
| of which Sugars | 0 g | |
| Protein | 0 g | |
| Salt | 0.16 g | 3% |

HANDLING &
STORAGE
INFORMATION

Directions For Use

Refrigerate after opening and consume within 3 days

Storage Instructions

Store cool and dry.

ORIGIN

Product Country of OriginGreat Britain

Origin of the Primary Ingredient

SAFETY &
WARNINGS
CONTACT
INFORMATION

Address

Coca-Cola
Coca-Cola Europacific Partners Great Britain Limited
Pemberton House, Bakers Road
Uxbridge
UB8 1EZ
United Kingdom

Technical Contact

Data Queries
npidataexchange@ccep.com

P: (Phone) 08081000000

The information on the [Erudus System](#) has been supplied by the manufacturers of the products and, whilst the owners of the Erudus System take steps to ensure the information is regularly updated, they give no warranty and no guarantee that the information is accurate. Product information and ingredients may change, please always read product labels carefully in addition to using the information provided by Erudus.

We do not accept liability for any inaccuracies or incorrect information contained on this site.
Please visit <http://www.erudus.com/terms-and-conditions> for full terms and conditions.