

640019

54 x Kara Wholemeal Hoagies®

Wholemeal Hoagies 54x

PRODUCT DESCRIPTION

An unsliced large wholemeal finger roll with a coating of malted wheat grains

Brand	Kara Foodservice (Fletchers)
Manufacturer Product Code	F00359
Product Type	Food
Product Category	Bread and Bread Products
Storage Type	Frozen
Erudus ID	a8afe6c2cbcd4786a42707a7d29cddc5
Specification Type	Legacy
Outer Case GTIN	05010066000079



INGREDIENTS

Ingredient Declaration

Wholemeal **WHEAT** Flour, Water, Kibbled Malted **WHEAT** (4%), Salt, **WHEAT** Flour, Fermented **WHEAT** Flour, Palm Oil, Yeast, Emulsifier (E472e), Wheat Flour (**WHEAT** Flour, Calcium Carbonate, Iron, Niacin, Thiamin), Flour Treatment Agent (E300), Rapeseed Oil.

ALLERGENS

Product Contains:

Celery/Celeriac	No
Cereals Containing Gluten	Yes
Barley	May Contain
Oats	May Contain
Rye	May Contain
Wheat (including Spelt and Khorasan)	Yes
Gluten content <20ppm	No
Crustacea	No
Eggs	May Contain
Fish	No
Lupin	No
Milk	May Contain
Molluscs	No

Mustard	No
Nuts (Tree)	No
Almond nuts	No
Brazil nuts	No
Cashew nuts	No
Hazelnuts	No
Macadamia (Queensland) nuts	No
Pecan nuts	No
Pistachio nuts	No
Walnuts	No
Peanuts	No
Sesame Seeds	May Contain
Soybeans	May Contain
Sulphur Dioxide and Sulphites	No

Risk Source:

Additional Allergen Information

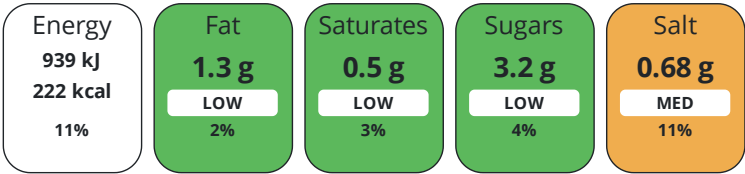
For allergens , including cereals containing gluten, see ingredients in CAPITAL. Also, may contain egg, milk, soya and sesame.

DIET
SUITABILITY

Suitable for Coeliacs	No
Kosher Diet	No
Vegan Diet	No

Halal Diet	No
Vegetarian Diet	Suitable for

Each 100g/ml portion contains:



of your reference intake.

Typical values per 100g/ml : Energy 222kcal / 939kJ

Nutrient	per 100g/ml	RI per 100g/ml	per 98g/ml serving	RI per 98g/ml serving
Energy (kJ)	939 kJ	11%	920.2 kJ	11%
Energy (kcal)	222 kcal	11%	217.6 kcal	11%
Fat	1.3 g	2%	1.3 g	2%
of which Saturates	0.5 g	3%	0.5 g	3%
of which Mono-unsaturates	0.3 g		0.3 g	
of which Polyunsaturates	0.4 g		0.4 g	
Carbohydrate	38.7 g	15%	37.9 g	15%
of which Sugars	3.2 g	4%	3.1 g	3%
of which Polyols	0 g		-	
of which Starch	35.5 g		34.8 g	
Fibre	7.6 g		7.4 g	
Protein	10.1 g	20%	9.9 g	20%
Salt	0.68 g	11%	0.7 g	12%
Sodium	270 mg		264.6 mg	
Serving Size	98 g			

Directions For Use

To defrost: remove from case and leave in pack at room temperature for approximately 2 hours, or until fully defrosted. Once defrosted, store in a sealed pack in a cool, dry place away from direct sunlight. Once defrosted use within 4 days.

Storage Instructions

Keep frozen, store frozen at -18°C or below. Once defrosted do not refreeze.

Product Country of OriginUnited Kingdom

Additional Origin Details

N/A
Address
Kara Foodservice (Fletchers)
Park Seventeen
Moss Lane
Whitefield
Manchester
M45 8FJ
England

P: (Phone) 0161 766 7471

The information on the [Erudus System](#) has been supplied by the manufacturers of the products and, whilst the owners of the Erudus System take steps to ensure the information is regularly updated, they give no warranty and no guarantee that the information is accurate. Product information and ingredients may change, please always read product labels carefully in addition to using the information provided by Erudus.

We do not accept liability for any inaccuracies or incorrect information contained on this site.
Please visit <http://www.erudus.com/terms-and-conditions> for full terms and conditions.