

Changed Oct 29, 2024 10:48

Reviewed Oct 29, 2024 10:48

Erudus ID 329de46c723d436a894af85d19c1e93a

Version 2.1

Status Published

# Mixed Spices 6x500g

Mixed Spices 6x500g

## PRODUCT DESCRIPTION

A blend of spices

Brand	Greenfields London Ltd
Manufacturer Product Code	2907
Product Type	Food
Product Category	Chillies, Herbs & Spices
Storage Type	Ambient
Erudus ID	329de46c723d436a894af85d19c1e93a
Specification Type	Generic
Inner Component GTIN	5027906040690
Outer Case GTIN	5027976042259



## INGREDIENTS

### Ingredient Declaration

Coriander, Cinnamon, Ginger, Nutmeg, Fennel, Cloves

## ALLERGENS

Product Contains:

Celery/Celeriac	No
Cereals Containing Gluten	No
Barley	No
Oats	No
Rye	No
Wheat (including Spelt and Khorasan)	No
Crustacea	No
Eggs	No
Fish	No
Lupin	No
Milk	No
Molluscs	No

Mustard	No
Nuts (Tree)	No
Almond nuts	No
Brazil nuts	No
Cashew nuts	No
Hazelnuts	No
Macadamia (Queensland) nuts	No
Pecan nuts	No
Pistachio nuts	No
Walnuts	No
Peanuts	No
Sesame Seeds	No
Soybeans	No
Sulphur Dioxide and Sulphites	No

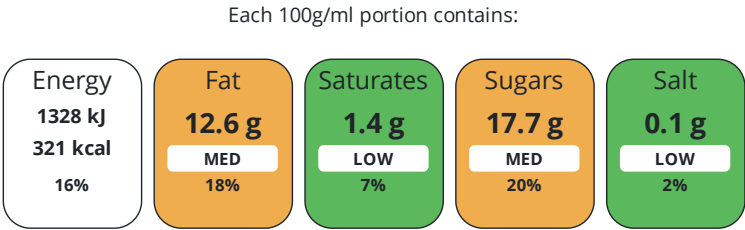
### Additional Allergen Information

Where products are indicated as not having an allergen present this refers to the product not being formulated or wholly derived from the particular ingredient. Allergen handling policies and procedures are in place through the supply chain to reduce the likelihood of cross contamination from allergens. Unless otherwise stated in the table above products are supplied, to the best of our knowledge, free from celery/celeriac, cereals containing wheat, crustacea, egg, fish, lupin, milk, molluscs, mustard, nuts and nut derivatives, peanuts, sesame seeds, soybeans, sulphur dioxide and sulphites . Due diligence checks of the supply chain are in place, however due to the nature of the products supplied it is not possible for the company to guarantee that no cross contamination has taken place at some point in the supply chain prior to delivery to our premises.

DIET  
SUITABILITY

Vegan Diet	Suitable for	Vegetarian Diet	Suitable for
Halal Diet	Suitable for	Kosher Diet	Suitable for

NUTRITIONAL  
INFORMATION AS  
SOLD



of your reference intake.  
Typical values per 100g/ml : Energy 321kcal / 1328kJ

Nutrient	per 100g	RI per 100g
Energy (kJ)	1328 kJ	16%
Energy (kcal)	321 kcal	16%
Fat	12.6 g	18%
of which Saturates	1.4 g	7%
Carbohydrate	22.2 g	9%
of which Sugars	17.7 g	20%
Fibre	40.5 g	
Protein	9.6 g	19%
Salt	0.1 g	2%
Sodium	36 mg	

HANDLING &  
STORAGE  
INFORMATION

Directions For Use

As required

Storage Instructions

Store in a dry, cool place

ORIGIN

Product Country of Origin	Indonesia
Additional Origin Details	
Coriander: Eastern Europe, Russia Cassia: Indonesia Ginger: China, India Fennel: India, Egypt Nutmeg: Indonesia, India Cloves: Indonesia, Sri Lanka, India	
Origin of the Primary Ingredient	

SAFETY &  
WARNINGS

CONTACT  
INFORMATION

Address

Greenfields London Ltd  
25 Crawford Street  
London  
W1H 1PL  
United Kingdom

Technical Contact

Anna  
Greenfields Team  
anna@greenfieldsuk.co.uk

P: (Phone) 0208 997 8555

Commercial Contact

Karim Ali  
Director  
karim@greenfieldsuk.co.uk

P: (Phone) 0208 997 8555

The information on the [Erudus System](#) has been supplied by the manufacturers of the products and, whilst the owners of the Erudus System take steps to ensure the information is regularly updated, they give no warranty and no guarantee that the information is accurate. Product information and ingredients may change, please always read product labels carefully in addition to using the information provided by Erudus.

We do not accept liability for any inaccuracies or incorrect information contained on this site.  
Please visit <http://www.erudus.com/terms-and-conditions> for full terms and conditions.