

Changed Jul 14, 2025 13:14

Reviewed Jul 14, 2025 13:14

Erudus ID 0bbc60e7d19a49819199d294260851c9

Version 2.0

Status Published

001143

PSL BBQ Sauce (200)

Barbecue Sauce 200x9g

PRODUCT DESCRIPTION

BBQ Sauce Sachets x 200

Brand	Portion Solutions Ltd
Manufacturer Product Code	60122907
Effective Date	Jul 14, 2025
Product Type	Food
Product Category	Condiments
Storage Type	Ambient
Erudus ID	0bbc60e7d19a49819199d294260851c9
Specification Type	Generic
Outer Case GTIN	5050415047140



INGREDIENTS

Ingredient Declaration

Sugar Syrup, Spirit Vinegar, Tomato Paste, Thickener (Modified Starch), Salt, Flavouring, Colour (Plain Caramel), Rapeseed Oil, Preservative (Potassium Sorbate), Stabiliser (Xanthan Gum), Sweetener (Sucralose).

ALLERGENS

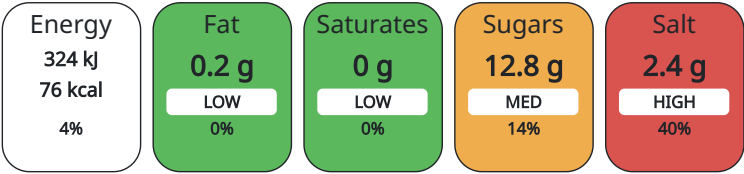
Product Contains:

Celery/Celeriac	No	Mustard	No
Cereals Containing Gluten	No	Nuts (Tree)	No
Barley	No	Almond nuts	No
Oats	No	Brazil nuts	No
Rye	No	Cashew nuts	No
Wheat (including Spelt and Khorasan)	No	Hazelnuts	No
Crustacea	No	Macadamia (Queensland) nuts	No
Eggs	No	Pecan nuts	No
Fish	No	Pistachio nuts	No
Lupin	No	Walnuts	No
Milk	No	Peanuts	No
Molluscs	No	Sesame Seeds	No
		Soybeans	No
		Sulphur Dioxide and Sulphites	No

DIET SUITABILITY

Vegan Diet	Suitable for	Vegetarian Diet	Suitable for
Halal Diet	No	Kosher Diet	No

Each 100g/ml portion contains:



of your reference intake.

Typical values per 100g/ml : Energy 76kcal / 324kJ

Nutrient	per 100g	RI per 100g	per 9g serving	RI per 9g serving
Energy (kJ)	324 kJ	4%	29.16	0%
Energy (kcal)	76 kcal	4%	6.84	0%
Fat	0.2 g	0%	0.02 g	0%
of which Saturates	0 g		0 g	
Carbohydrate	17.1 g	7%	1.54 g	1%
of which Sugars	12.8 g	14%	1.15 g	1%
Protein	0.4 g	1%	0.04 g	0%
Salt	2.4 g	40%	0.22 g	4%

Serving Size9 g

HANDLING &
STORAGE
INFORMATION

Directions For Use
USE SACHET IMMEDIATELY ONCE OPENED

Storage Instructions
STORE IN COOL DRY CONDITIONS

ORIGIN

Product Country of OriginUnited Kingdom

Origin of the Primary IngredientUnited Kingdom

CONTACT
INFORMATION

Address	Technical Contact
Portion Solutions Ltd	Magdalena Piekielek
Hortonwood 40	Head of Technical
Telford	Magdalena.piekielek@portionsolutions.co.uk
Shropshire	
TF1 7EY	P: (Phone) 01952979102
England	
P: (Phone) 0044 (0)1952 234100	
Complaints Contact	Commercial Contact
Managed Account (non-conformance)	Luke Thompson
nonconformance@portionsolutions.co.uk	Account Manager
P: (Phone) 01952234100	luke.thompson@portionsolutions.co.uk
	P: (Phone) 07764987561

The information on the [Erudus System](#) has been supplied by the manufacturers of the products and, whilst the owners of the Erudus System take steps to ensure the information is regularly updated, they give no warranty and no guarantee that the information is accurate. Product information and ingredients may change, please always read product labels carefully in addition to using the information provided by Erudus.

We do not accept liability for any inaccuracies or incorrect information contained on this site.
Please visit <http://www.erudus.com/terms-and-conditions> for full terms and conditions.