

Feta & Spinach Samosa 30g x 50

Feta & Spinach Samosa 1x30g

PRODUCT DESCRIPTION

A rich, hand-formed cheese mix of feta and spinach in a crisp spring roll pastry

Brand	Scheff Foods Ltd
Manufacturer Product Code	FSAM30
Product Type	Food
Product Category	Ready Meals
Storage Type	Frozen
Erudus ID	3f9236672331499bab801e202f7ec918
Specification Type	Generic



Outer Case GTIN5055775105035



INGREDIENTS

Ingredient Declaration

Pastry (Contains: WHEAT Flour, Water, Coconut Oil, Salt), Full Fat Soft Cheese [MILK], Feta Cheese (13%) [MILK], Spinach (9%), Onion, Lemon Juice, Cheddar Cheese [MILK], Water, Medium Fat Hard Cheese [MILK], Fortified WHEAT Flour (Contains: Calcium Carbonate, Iron, Niacin, Thiamin), Spices, Sugar, Margarine (Contains: Palm Oil, Rapeseed Oil, Water, Salt, Emulsifier E471, Natural Colourings (E160b(i), E100), Natural Flavouring), Dill, MILK Powder, Modified Maize Starch E1422, Yeast Extract (Contains: Salt), Acid E330, Salt, Herb

ALLERGENS

Product Contains:

Celery/Celeriac	No
Cereals Containing Gluten	Yes
Barley	No
Oats	No
Rye	No
Wheat (including Spelt and Khorasan)	Yes
Crustacea	No
Eggs	No
Fish	No
Lupin	No
Milk	Yes
Molluscs	No

Mustard	No
Nuts (Tree)	May Contain
Almond nuts	May Contain
Brazil nuts	No
Cashew nuts	May Contain
Hazelnuts	May Contain
Macadamia (Queensland) nuts	No
Pecan nuts	May Contain
Pistachio nuts	No
Walnuts	No
Peanuts	No
Sesame Seeds	No
Soybeans	No
Sulphur Dioxide and Sulphites	No

Risk Source:

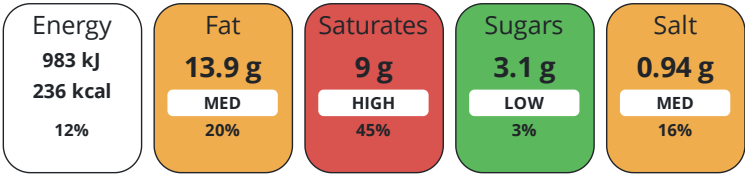
DIET SUITABILITY

Vegan Diet	No
Halal Diet	No

Vegetarian Diet	Suitable for
Kosher Diet	No

NUTRITIONAL
INFORMATION

Each 100g/ml portion contains:



of your reference intake.

Typical values per 100g/ml : Energy 236kcal / 983kj

Nutrient	per 100g	RI per 100g
Energy (kJ)	983 kJ	12%
Energy (kcal)	236 kcal	12%
Fat	13.9 g	20%
of which Saturates	9 g	45%
of which Mono-unsaturates	3.9 g	
of which Polyunsaturates	0.9 g	
Carbohydrate	17.7 g	7%
of which Sugars	3.1 g	3%
of which Starch	14.5 g	
Fibre	0.7 g	
Protein	9.2 g	18%
Salt	0.94 g	16%
Sodium	377 mg	

HANDLING &
STORAGE
INFORMATION

Directions For Use

From Frozen, deep fry in oil at 180°C for 3 - 5 minutes or until golden brown and thoroughly heated. Drain on absorbent paper before serving.

Storage Instructions

-18°C or below, Once defrosted do not re-freeze

ORIGIN

Product Country of Origin United Kingdom

Origin of the Primary Ingredient United Kingdom

CONTACT
INFORMATION

Address

Scheff Foods Ltd
Halfords Park
Halfords Lane
Smethwick
B66 1EL
England

P: (Phone) 0121 565 2280

The information on the [Erudus System](#) has been supplied by the manufacturers of the products and, whilst the owners of the Erudus System take steps to ensure the information is regularly updated, they give no warranty and no guarantee that the information is accurate. Product information and ingredients may change, please always read product labels carefully in addition to using the information provided by Erudus.

We do not accept liability for any inaccuracies or incorrect information contained on this site.
Please visit <http://www.erudus.com/terms-and-conditions> for full terms and conditions.