

# M&Ms Pnt 24x45g GB EI

M&m's Peanut Chocolate Bag 45g 24x0.05kg

## PRODUCT DESCRIPTION

Bite Size Chocolate

Brand	Mars
Manufacturer Product Code	280041
Product Type	Food
Product Category	Confectionery
Storage Type	Ambient
Erudus ID	f44cf669b07447a58d41d78e7ed44aaf
Specification Type	Generic
Inner Component GTIN	40111445
Outer Case GTIN	5000159460293



## INGREDIENTS

**Ingredient Declaration**

Sugar, PEANUTS, Cocoa Mass, Full Cream MILK Powder, Cocoa Butter, Starch, Palm Fat, Glucose Syrup, Skimmed MILK Powder, Emulsifier (SOYA Lecithin), Stabiliser (Gum Arabic), Shea Fat, Whey Permeate (MILK), MILK Fat, Dextrin, Glazing Agent (Carnauba Wax), Colours, Palm Kernel Oil, Salt, Flavouring, E100, E120, E133, E160a, E160e, E170, Milk Chocolate contains Milk Solids 14% minimum, Milk Chocolate contains Vegetable Fats in addition to Cocoa Butter

**Ingredient Statements**

Milk Chocolate contains Milk Solids 14% minimum. Milk Chocolate contains vegetable fats in addition to coca butter.

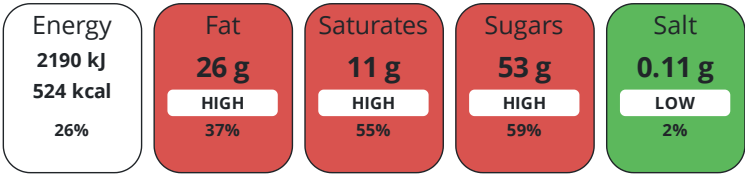
## ALLERGENS

Product Contains:			
Celery/Celeriac	No	Mustard	No
Cereals Containing Gluten	No	Nuts (Tree)	May Contain
Barley	No	Almond nuts	May Contain
Oats	No	Brazil nuts	May Contain
Rye	No	Cashew nuts	May Contain
Wheat (including Spelt and Khorasan)	No	Hazelnuts	May Contain
Crustacea	No	Macadamia (Queensland) nuts	May Contain
Eggs	No	Pecan nuts	May Contain
Fish	No	Pistachio nuts	May Contain
Lupin	No	Walnuts	May Contain
Milk	Yes	Peanuts	Yes
Molluscs	No	Sesame Seeds	No
		Soybeans	Yes
		Sulphur Dioxide and Sulphites	No

Risk Source:

NUTRITIONAL  
INFORMATION

Each 100g/ml portion contains:



of your reference intake.  
Typical values per 100g/ml : Energy 524kcal / 2190kJ

Nutrient	per 100g	RI per 100g
Energy (kJ)	2190 kJ	26%
Energy (kcal)	524 kcal	26%
Fat	26 g	37%
of which Saturates	11 g	55%
Carbohydrate	59 g	23%
of which Sugars	53 g	59%
Protein	9.8 g	20%
Salt	0.11 g	2%

HANDLING &  
STORAGE  
INFORMATION

Directions For Use

Ready to eat

Storage Instructions

Keep cool and dry

ORIGIN

Product Country of Origin France

CONTACT  
INFORMATION

Origin of the Primary Ingredient

Address

Mars  
3d Dundee Road  
Slough  
SL1 4LG  
United Kingdom

Technical Contact

Charlie Perry  
charlie.perry@effem.com

The information on the [Erudus System](#) has been supplied by the manufacturers of the products and, whilst the owners of the Erudus System take steps to ensure the information is regularly updated, they give no warranty and no guarantee that the information is accurate. Product information and ingredients may change, please always read product labels carefully in addition to using the information provided by Erudus.

We do not accept liability for any inaccuracies or incorrect information contained on this site.  
Please visit <http://www.erudus.com/terms-and-conditions> for full terms and conditions.