

Supplier's Product Code :
 Product Added :
 Last Updated by Supplier :
 erudus id :

8206
 15 April 2021
 15 April 2021
 d457784d501a44dea285038cc9936b2e

The information on the [Erudus System](#) has been supplied by the manufacturers of the products and, whilst the owners of the Erudus System take steps to ensure the information is regularly updated, they give no warranty and no guarantee that the information is accurate. Product information and ingredients may change, please always read product labels carefully in addition to using the information provided by Erudus One.

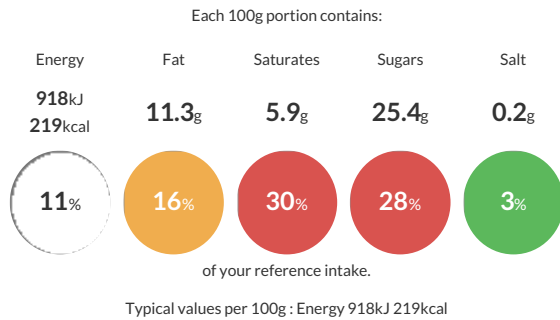
We do not accept liability for any inaccuracies or incorrect information contained on this site. Please visit <http://www.erudus.com/terms-and-conditions> for full terms and conditions.

Dairy Coconut Ice Cream 4.75 Litres

Dairy Ice Cream with Coconut

Traded Unit GTIN: **5030210003374** Internal GTIN: **5030210003374** Supplier : **New Forest Ice Cream** Suppliers Product Code : **8206**

Reference Intake



Nutritional Information

Typical Values	Per 100g
Energy	918kJ 219kCal
Carbohydrates	26g
of which sugars	25.4g
Fat	11.3g
of which saturates	5.9g
Fibre	0.6g
Protein	3.5g
Salt	0.2g

Allergy Information

Key: **Contains** **May Contain**



Allergen Statement

May contain **EGG, SOYA, GLUTEN**

Ingredients

Whole **MILK**, coconut preparation (20%) [contains sugar, water, coconut 15%, modified waxy maize starch, natural flavouring.], double cream (15%) [from **MILK**], sugar, skimmed **MILK** powder, dextrose, emulsifier (mono-and di-glycerides of fatty acids (vegetable origin)), stabilisers (sodium alginate, guar gum).

Dietary Information

Key: **Suitable for**

