

Changed Sep 04, 2025 15:19

Reviewed Sep 04, 2025 15:19

Erudus ID 07020c1b59924bee9cdaca69f4654df2

Version 4.0

Status Published

GF Vegan Cherry Bakewell Tarts (1 x 28)

Gf Vegan Cherry Bakewell Tarts (1 X 28) 28x1kg

PRODUCT DESCRIPTION

Gluten, wheat and milk free pastry case with a layer of raspberry jam, frangipane, fondant icing and topped with half a glacé cherry. Palm from a sustainable source certified Mass Balance. RSPO certificate number BMT-RSPO-000226 (1 x 28)

Manufacturer Product Code	WLC0662
Product Type	Food
Product Category	Cakes and Tarts
Storage Type	Frozen
Erudus ID	07020c1b59924bee9cdaca69f4654df2
Specification Type	Bakery Products



Inner Pack GTIN 5028931006620

Outer Case GTIN 05028931106627



INGREDIENTS

Ingredient Declaration

Sugar, Tapioca Starch, Brown Rice Flour, Raspberry Jam (9%) (Glucose-fructose Syrup, Raspberry Concentrate, Sugar, Gelling Agent (E440), Acidity Regulators (E330, E331), Colour (E163), Flavouring, Preservative (E202)), Palm Oil, Ground ALMONDS (6%), Rapeseed Oil, Glacé Cherries (6%) (Cherries, Glucose-fructose Syrup, Sugar, Fruit and Vegetable Juice Extracts (Carrot, Radish, Apple, Cherry, Sweet Potato), Acidity Regulator (E330)), Glucose Syrup, Water, Brown Sugar, Coconut Milk, Rice Flour, Cornflour, Gram Flour, Fructose, Dextrose, Emulsifiers (E471, E473), Flavouring, Salt, Colours (E150a, E161b), Thickener (E415), Preservatives (E202, E282), Humectant (Glycerine), Raising Agents (E341, E500), Acidity Regulators (E260, E330), Rice Starch.

ALLERGENS

Product Contains:

Celery/Celeriac	No
Cereals Containing Gluten	No
Barley	No
Oats	No
Rye	No
Wheat (including Spelt and Khorasan)	No
Crustacea	No
Eggs	May Contain
Fish	No
Lupin	No
Milk	No
Molluscs	No

Mustard	No
Nuts (Tree)	Yes
Almond nuts	Yes
Brazil nuts	May Contain
Cashew nuts	May Contain
Hazelnuts	May Contain
Macadamia (Queensland) nuts	No
Pecan nuts	May Contain
Pistachio nuts	May Contain
Walnuts	May Contain
Peanuts	May Contain
Sesame Seeds	No
Soybeans	No
Sulphur Dioxide and Sulphites	No

Risk Source:

Allergen Statement On Pack

For allergens, see ingredients in CAPITALS.

Additional Allergen Information

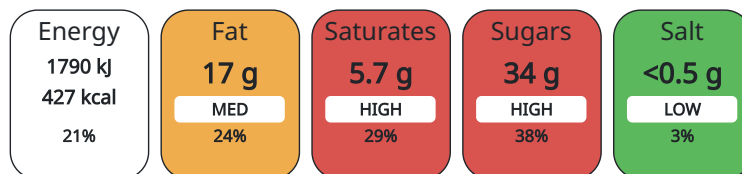
Made in an environment that handles other NUTS and EGG. May contain traces of PEANUT. Nuts handled, Pecan, walnut, pistachio, hazelnut, cashew, brazil.

DIET SUITABILITY

Vegan Diet	Suitable for	Vegetarian Diet	Suitable for
Halal Diet	No	Kosher Diet	No

NUTRITIONAL INFORMATION AS SOLD

Each 100g/ml portion contains:



of your reference intake.

Typical values per 100g/ml : Energy 427kcal / 1790kJ

Nutrient	per 100g	RI per 100g	per 50g serving	RI per 50g serving
Energy (kJ)	1790 kJ	21%	895 kJ	11%
Energy (kcal)	427 kcal	21%	214 kcal	11%
Fat	17.1 g	24%	8.6 g	12%
of which Saturates	5.7 g	29%	2.9 g	15%
of which Mono-unsaturates	7.7 g		3.9 g	
of which Polyunsaturates	2.9 g		1.5 g	
Carbohydrate	63.6 g	24%	31.8 g	12%
of which Sugars	34.1 g	38%	17 g	19%
Fibre	2.1 g		1 g	
Protein	3.6 g	7%	1.8 g	4%
Salt	0.18 g	3%	0.09 g	2%
Sodium	70 mg		35 mg	

Serving Size 50 g

**HANDLING &
STORAGE
INFORMATION**

Directions For Use

From Frozen unless otherwise stated Defrost at room temperature for 6 hours. Once defrosted do not refreeze. Once defrosted, label each individual product with Best Before Date: date of defrost + 28 days.

Storage Instructions

Keep Frozen. Store at -18°C or below

ORIGIN

Product Country of Origin United Kingdom

Origin of the Primary Ingredient Not Applicable

**MARKETING
INFORMATION**

Marketing Description

Individually wrapped. Cherry bakewell tart filled with raspberry jam and almond flavoured sponge, topped with fondant icing and a half glacé cherry. Wheat, gluten and milk-free. Suitable for vegetarians, vegans and coeliacs. Defrosted shelf-life = 28 days. (1 x Cherry Bakewell Tart)

**CONTACT
INFORMATION**

Address

Central Foods Group Limited
Maple Court
Ash Lane
NN4 0NB
Collingtree
Northamptonshire
England

technical@centralfoods.co.uk
01604 858 522

Technical

Chris Stobart
technical@centralfoods.co.uk
01604 878 276
Technical Manager

Commercial

Oliver Sampson
osampson@centralfoods.co.uk
07715 073 273
Managing Director

Complaints

Karen Wright
kwright@centralfoods.co.uk
01604 878 299
Customer Care Admin Assistant

The information on the [Erudus System](#) has been supplied by the manufacturers of the products and, whilst the owners of the Erudus System take steps to ensure the information is regularly updated, they give no warranty and no guarantee that the information is accurate. Product information and ingredients may change, please always read product labels carefully in addition to using the information provided by Erudus.

We do not accept liability for any inaccuracies or incorrect information contained on this site.
Please visit <http://www.erudus.com/terms-and-conditions> for full terms and conditions.