

Changed Dec 08, 2025 12:14

Reviewed Dec 08, 2025 12:14

Erudus ID e18b975287804ffbad63c49c93e4b549

Version 2.0

Status Published

GF Caramel Shortbread (1 x 18)

Gf Caramel Shortbread (1 X 18) 18x1kg

PRODUCT DESCRIPTION

Gluten, wheat and milk free shortbread base topped with a layer of caramel filling finished with dark chocolate. Palm from a sustainable source, RSPO certificate number BMT-RSPO-000226. (1 x 18)

Manufacturer Product Code	WLC0656
Product Type	Food
Product Category	Cakes and Tarts
Storage Type	Frozen
Erudus ID	e18b975287804ffbad63c49c93e4b549
Specification Type	Bakery Products



Inner Pack GTIN	5028931006569
Outer Case GTIN	05028931106566



INGREDIENTS

Ingredient Declaration

Shortbread (45%) (Rice Flour, Brown Rice Flour, Palm Oil, Brown Sugar, Sugar, Tapioca Starch, Rapeseed Oil, Water, Flavouring, Thickener (E415), Raising Agents (E341, E500), Salt, Colour (E150a), Emulsifier (E471)), Caramel (37%) (Golden Syrup, Cocoa Butter, Rice Flour, Sugar, Flavouring, Colour (E150a), Salt), Dark Chocolate (18%) (Cocoa Mass, Sugar, Cocoa Butter, Emulsifier (Sunflower Lecithins), Flavouring).

ALLERGENS

Product Contains:

Celery/Celeriac	No	Mustard	No
Cereals Containing Gluten	No	Nuts (Tree)	May Contain
Barley	No	Almond nuts	May Contain
Oats	No	Brazil nuts	May Contain
Rye	No	Cashew nuts	May Contain
Wheat (including Spelt and Khorasan)	No	Hazelnuts	May Contain
Crustacea	No	Macadamia (Queensland) nuts	No
Eggs	May Contain	Pecan nuts	May Contain
Fish	No	Pistachio nuts	May Contain
Lupin	No	Walnuts	May Contain
Milk	No	Peanuts	No
Molluscs	No	Sesame Seeds	No
		Soybeans	No
		Sulphur Dioxide and Sulphites	No

Risk Source:

Eggs (Risk Source)	Line	Tree Nuts (Risk Source)	Factory
Almond nuts (Risk Source)	Factory	Brazil nuts (Risk Source)	Factory
Cashew nuts (Risk Source)	Factory	Hazelnuts (Risk Source)	Factory
Pecan nuts (Risk Source)	Factory	Pistachio nuts (Risk Source)	Factory
Walnuts (Risk Source)	Factory		

Additional Allergen Information

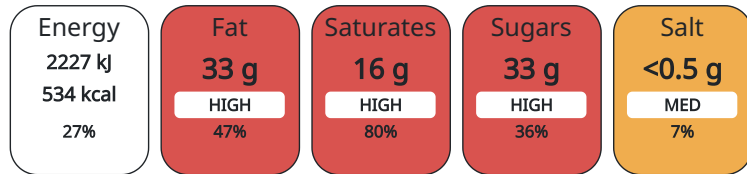
Made in an environment that handles NUTS and EGG. Nuts Handled: ALMONDS, HAZELNUTS, WALNUTS, PISTACHIOS, PECANS, BRAZILS and CASHEWS.

DIET SUITABILITY

Vegan Diet	Suitable for	Vegetarian Diet	Suitable for
Halal Diet	No	Kosher Diet	No

NUTRITIONAL INFORMATION AS SOLD

Each 100g/ml portion contains:



of your reference intake.

Typical values per 100g/ml : Energy 534kcal / 2227kJ

Nutrient	per 100g	RI per 100g	per 55g serving	RI per 55g serving
Energy (kJ)	2227 kJ	27%	1225 kJ	15%
Energy (kcal)	534 kcal	27%	294 kcal	15%
Fat	32.8 g	47%	18.1 g	26%
of which Saturates	15.9 g	80%	8.7 g	44%
of which Mono-unsaturates	11.5 g		6.3 g	
of which Polyunsaturates	3.9 g		2.1 g	
Carbohydrate	56.4 g	22%	31 g	12%
of which Sugars	32.8 g	36%	18 g	20%
Fibre	1.5 g		0.8 g	
Protein	2.6 g	5%	1.4 g	3%
Salt	0.4 g	7%	0.2 g	3%
Sodium	160 mg		88 mg	
Serving Size	55 g			

HANDLING & STORAGE INFORMATION

Directions For Use

From Frozen unless otherwise stated Defrost at room temperature for 6 hours. Once defrosted do not refreeze. Once defrosted, label each individual product with Best Before Date: Day of defrost + 28 days. To maintain gluten-free and vegan integrity, please ensure all equipment used for gluten-free and vegan preparation/cooking/serving is clean or dedicated for gluten-free and vegan use only.

Storage Instructions

Keep Frozen. Store at -18°C or below

ORIGIN

Product Country of Origin	United Kingdom
Origin of the Primary Ingredient	Not Applicable

MARKETING
INFORMATION

Marketing Description

Individually wrapped. Crumbly shortbread base layered with thick caramel, all topped with dark chocolate. Wheat, gluten and milk-free. Suitable for vegetarians, vegans and coeliacs. Defrosted shelf-life = 28 days. (1 x Vegan Gluten-free Caramel Shortbread 50g)

CONTACT
INFORMATION

Address

Central Foods Group Limited
Maple Court
Ash Lane
NN4 0NB
Collingtree
Northamptonshire
England

technical@centralfoods.co.uk
01604 858 522

Technical

Chris Stobart
technical@centralfoods.co.uk
01604 878 276
Technical Manager

Commercial

Oliver Sampson
osampson@centralfoods.co.uk
07715 073 273
Managing Director

Complaints

Karen Wright
kwright@centralfoods.co.uk
01604 878 299
Customer Care Admin Assistant

The information on the [Erudus System](#) has been supplied by the manufacturers of the products and, whilst the owners of the Erudus System take steps to ensure the information is regularly updated, they give no warranty and no guarantee that the information is accurate. Product information and ingredients may change, please always read product labels carefully in addition to using the information provided by Erudus.

We do not accept liability for any inaccuracies or incorrect information contained on this site.
Please visit <http://www.erudus.com/terms-and-conditions> for full terms and conditions.