

Changed Oct 19, 2024 08:09

Reviewed Oct 19, 2024 08:09

Erudus ID 345c54612e39494bad9384511375d9e4

Version 3.0

Status Published

Cornflour 4 x 3.5kg

Cornflour

PRODUCT DESCRIPTION

native maize starch

Brand	Richard Whittaker Ltd
Manufacturer Product Code	JB001C014
Product Type	Food
Product Category	Flour
Storage Type	Ambient
Erudus ID	345c54612e39494bad9384511375d9e4
Specification Type	Generic



Inner Component GTIN	5033897100275
Outer Case GTIN	5033897100282



INGREDIENTS

Ingredient Declaration
cornflour

ALLERGENS

Product Contains:

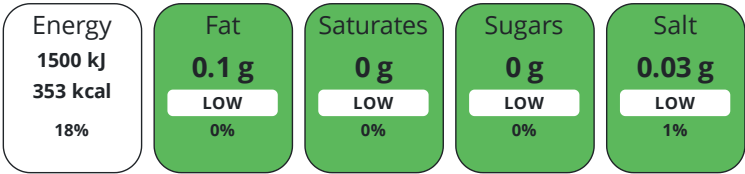
Celery/Celeriac	No
Cereals Containing Gluten	No
Barley	No
Oats	No
Rye	No
Wheat (including Spelt and Khorasan)	No
Crustacea	No
Eggs	No
Fish	No
Lupin	No
Milk	No
Molluscs	No

Mustard	No
Nuts (Tree)	No
Almond nuts	No
Brazil nuts	No
Cashew nuts	No
Hazelnuts	No
Macadamia (Queensland) nuts	No
Pecan nuts	No
Pistachio nuts	No
Walnuts	No
Peanuts	No
Sesame Seeds	No
Soybeans	No
Sulphur Dioxide and Sulphites	No

FREE FROM CLAIMS	Gluten-Free	Yes
DIET SUITABILITY	Vegan Diet	Suitable for
	Halal Diet	Suitable for

Vegetarian Diet	Suitable for
Kosher Diet	Suitable for

Each 100g/ml portion contains:



of your reference intake.

Typical values per 100g/ml : Energy 353kcal / 1500kJ

Nutrient	per 100g	RI per 100g
Energy (kJ)	1500 kJ	18%
Energy (kcal)	353 kcal	18%
Fat	0.1 g	0%
of which Saturates	0 g	
Carbohydrate	88 g	34%
of which Sugars	0 g	
Fibre	0 g	
Protein	0.3 g	1%
Salt	0.03 g	1%
Sodium	10 mg	

Source of Nutritional Information Manufacturers analysis

Nutrition Statements

Nutritional values provided above can be drawn from either product analysis at source or via an independent UKAS accredited laboratory at our expense, or they may have been calculated using historical and reference information. Actual results may differ significantly on actual analysis and therefore figures should be used as a guideline only. Should this data be critical to your usage, then it is recommended that you undertake your own analysis.

Directions For Use

use as required, make a slurry with cold liquid before adding to hot dishes or it will clump

Storage Instructions

Ambient Conditions. Store cool & dry in well sealed packages, or transfer to airtight container once opened.

Storage Instructions After Opening

Reseal securely or transfer to an air tight container once opened.

ORIGIN

Product Country of Origin Other

Additional Origin Details

Spain/Netherlands/Italy/Turkey

Origin of the Primary Ingredient

MARKETING
INFORMATION

Marketing Description

This starch is extracted from the endosperm of the corn kernel and is a staple ingredient commonly used as a binding agent in baking or a thickener in soups, and sauces. In the UK we refer to it as cornflour but in US it is known as corn starch. It actually doesn't occur naturally in any food but due to it's usefulness in cooking it is often found in ingredient listings. Unfortunately it has little nutritional benefits because most of the protein, fibre and other vitamins are lost during the production process.

SAFETY &
WARNINGS

CONTACT
INFORMATION

Address

Richard Whittaker Ltd
The Mayfield Centre Units 1-3
The Mayfield Centre Units 1-3
Rochdale
Greater Manchester
OL16 2UZ
England

P: (Phone) 01706 341 700

Complaints Contact

S Clegg
Quality Manager
shaun.clegg@richard-whittaker.co.uk

P: (Phone) 01706 341700

Technical Contact

Shaun Clegg
Quality Manager
shaun.clegg@richard-whittaker.co.uk

P: (Phone) 01706 341700

Commercial Contact

Paul Devenny
Sales
paul.devenny@richard-whittaker.co.uk

P: (Phone) 01706 341700

The information on the [Erudus System](#) has been supplied by the manufacturers of the products and, whilst the owners of the Erudus System take steps to ensure the information is regularly updated, they give no warranty and no guarantee that the information is accurate. Product information and ingredients may change, please always read product labels carefully in addition to using the information provided by Erudus.

We do not accept liability for any inaccuracies or incorrect information contained on this site.
Please visit <http://www.erudus.com/terms-and-conditions> for full terms and conditions.