

Changed Feb 19, 2026 09:26

Reviewed Feb 19, 2026 09:26

Erudus ID 2cbc03fe66174bfc9b4ddff588e192c4

Version 2.0

Status Published

030074

Applewood Smoked Cheddar Half Wheel (4 x 1.5kg)

Applewood Smoked Cheddar Half Wheel (4 X 1.5kg) 4x1x1500g

PRODUCT DESCRIPTION

Mild Cheddar blended with smoke flavouring, extruded into 1.5kg half-moons and dusted with paprika

Manufacturer Product Code	30232
Manufacturer Version	2
Number	
Effective Date	Feb 19, 2026
Product Type	Food
Product Category	Hard Cheese
Storage Type	Chilled
Erudus ID	2cbc03fe66174bfc9b4ddff588e192c4
Specification Type	Cheese

Inner Component GTIN	5014442016418
Outer Case GTIN	05014442625085



INGREDIENTS

Ingredient Declaration

Cheddar Cheese (MILK), Smoke Flavouring, Paprika

ALLERGENS

Product Contains:

Celery/Celeriac	No	Mustard	No
Cereals Containing Gluten	No	Nuts (Tree)	No
Barley	No	Almond nuts	No
Oats	No	Brazil nuts	No
Rye	No	Cashew nuts	No
Wheat (including Spelt and Khorasan)	No	Hazelnuts	No
Crustacea	No	Macadamia (Queensland) nuts	No
Eggs	No	Pecan nuts	No
Fish	No	Pistachio nuts	No
Lupin	No	Walnuts	No
Milk	Yes	Peanuts	No
Molluscs	No	Sesame Seeds	No
		Soybeans	No
		Sulphur Dioxide and Sulphites	No

Allergen Statement On Pack

for ALLERGENS see ingredients in BOLD

DIET SUITABILITY

Vegetarian Diet

Suitable for

Halal Diet

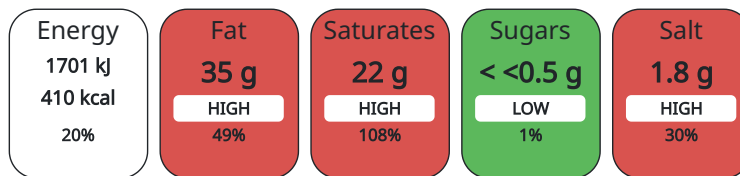
No

Kosher Diet

No

NUTRITIONAL
INFORMATION AS
SOLD

Each 100g/ml portion contains:



of your reference intake.

Typical values per 100g/ml : Energy 410kcal / 1701kJ

Nutrient	per 100g	RI per 100g	per 30g serving	RI per 30g serving
Energy (kJ)	1701 kJ	20%	510.3 kJ	6%
Energy (kcal)	410 kcal	21%	123 kcal	6%
Fat	34.5 g	49%	10.35 g	15%
of which Saturates	21.6 g	108%	6.48 g	32%
of which Mono-unsaturates	10.1 g		3.03 g	
of which Polyunsaturates	1 g		0.3 g	
Carbohydrate	< 0.5 g	0%	0.15 g	0%
of which Sugars	< 0.5 g	1%	0.15 g	0%
Fibre	0 g		0 g	
Protein	24.9 g	50%	7.47 g	15%
Salt	1.8 g	30%	0.54 g	9%
Serving Size	30 g			
Serving Size Description	portion			
Number of Servings	50 Servings			

Source of Nutritional Information Manufacturers analysis

HANDLING &
STORAGE
INFORMATION

Directions For Use

Keep refrigerated +2°C - +5°C. Consume within 10 days of opening and by Best Before date shown.

Storage Instructions

Stored and distributed at a temperature range of +2°C - +5°C

ORIGIN

Product Country of Origin United Kingdom

Additional Origin Details

Produced in the UK with British milk

Origin of the Primary Ingredient Not Applicable

MARKETING
INFORMATION

Marketing Description

Made with Barber's Somerset Cheddar. Britain's Favourite Smoky Cheddar*. *KANTAR DATA 2024

CONTACT
INFORMATION

Address

Norseland Limited
Somerton Road
Ilchester
BA22 8JL
Somerset
United Kingdom

adavies@ilchestercheese.co.uk
01935 842800

Technical

Courtney Stewart
cstewart@ilchestercheese.co.uk
01935842810
Specifications Technologist

Commercial

Adam Davies
adavies@ilchestercheese.co.uk
07554 426745
National Account Manager - Foodservice & B2B

Complaints

customercomplaint@ilchestercheese.co.uk

The information on the [Erudus System](#) has been supplied by the manufacturers of the products and, whilst the owners of the Erudus System take steps to ensure the information is regularly updated, they give no warranty and no guarantee that the information is accurate. Product information and ingredients may change, please always read product labels carefully in addition to using the information provided by Erudus.

We do not accept liability for any inaccuracies or incorrect information contained on this site.
Please visit <http://www.erudus.com/terms-and-conditions> for full terms and conditions.