

800077

# Wafflemeister 90g Classic Liege Waffle - 30 x 90g

90g Classic Liege Waffle 30x

PRODUCT DESCRIPTION

Traditional 90g Classic Belgian Liege Waffle

Brand	Wafflemeister Trading Limited
Manufacturer Product Code	WFMCL90X30
Product Type	Food
Product Category	Bakery - General
Storage Type	Frozen
Erudus ID	05f78b3666bf4cbf94d63ea7b13b58c5
Specification Type	Legacy

Inner Component GTIN	5060868700066
Outer Case GTIN	5060868700080



INGREDIENTS

**Ingredient Declaration**

**WHEAT** flour, sugar, margarine (vegetable oils and fats (palm and rapeseed)), water, emulsifiers soya lecithin, mono- and diglycerides of fatty acids, salt, acid regulator: citric acid, natural flavours, colouring (beta-carotene), **EGGS**, yeast, invert sugar syrup, stabilizer sorbitol, **SOYA** flour, salt, emulsifier soya lecithin, flavour.

ALLERGENS

Product Contains:			
Celery/Celeriac	No	Mustard	No
Cereals Containing Gluten	Yes	Nuts (Tree)	No
Barley	No	Almond nuts	No
Oats	No	Brazil nuts	No
Rye	No	Cashew nuts	No
Wheat (including Spelt and Khorasan)	Yes	Hazelnuts	No
Crustacea	No	Macadamia (Queensland) nuts	No
Eggs	Yes	Pecan nuts	No
Fish	No	Pistachio nuts	No
Lupin	No	Walnuts	No
Milk	May Contain	Peanuts	No
Molluscs	No	Sesame Seeds	No
		Soybeans	Yes
		Sulphur Dioxide and Sulphites	No

Risk Source:

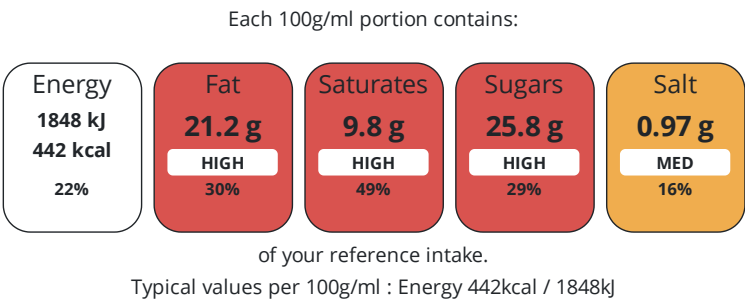
**Additional Allergen Information**

Contains Wheat, Eggs and Soya May contain traces of Milk

DIET  
SUITABILITY

Suitable for Coeliacs	No	Halal Diet	No
Kosher Diet	No	Vegetarian Diet	Suitable for
Vegan Diet	No		

NUTRITIONAL  
INFORMATION



Nutrient	per 100g/ml	RI per 100g/ml	per 90g/ml serving	RI per 90g/ml serving
Energy (kJ)	1848 kJ	22%	1663.2 kJ	20%
Energy (kcal)	442 kcal	22%	397.8 kcal	20%
Fat	21.2 g	30%	19.1 g	27%
of which Saturates	9.8 g	49%	8.8 g	44%
of which Mono-unsaturates	8.5 g		7.7 g	
of which Polyunsaturates	2.9 g		2.6 g	
Carbohydrate	55.8 g	21%	50.2 g	19%
of which Sugars	25.8 g	29%	23.2 g	26%
Fibre	1.8 g		1.6 g	
Protein	5.9 g	12%	5.3 g	11%
Salt	0.97 g	16%	0.9 g	15%
Serving Size	90 g			

HANDLING &  
STORAGE  
INFORMATION

**Directions For Use**  
The Waffle can be eaten at room temperature or deliciously warm. For best results remove the waffle from packaging, microwave for 15 seconds defrosted or for 30-50 seconds from frozen. You can also heat your waffle in a toaster or a pre-baked oven at 180C for 3 minutes.

**Storage Instructions**  
Store in the freezer at -18C or below. Do not refreeze after defrosting. Once defrosted - keep in the wrapper and use within 42 days. Once opened consume immediately. Individual items are not dated coded. This is the responsibility of the end user once defrosted

ORIGIN  
CONTACT  
INFORMATION

Product Country of Origin	Belgium
Address	Wafflemeister Trading Limited Suite 203 29 Castle Street Kingston Upon Thames KT1 1DN England
P: (Phone)	020 8549 1116

The information on the [Erudus System](#) has been supplied by the manufacturers of the products and, whilst the owners of the Erudus System take steps to ensure the information is regularly updated, they give no warranty and no guarantee that the information is accurate. Product information and ingredients may change, please always read product labels carefully in addition to using the information provided by Erudus.

We do not accept liability for any inaccuracies or incorrect information contained on this site.  
Please visit <http://www.erudus.com/terms-and-conditions> for full terms and conditions.