

KIT KAT 4 Finger Milk 24x41.5g

Kit Kat 4 Finger Milk Chocolate Bar 41.5g 24x41.5g

PRODUCT DESCRIPTION

Four crispy wafer fingers covered with milk chocolate (66%).

Brand	Nestle UK
Manufacturer Product Code	12585632
Product Type	Food
Product Category	Confectionery
Storage Type	Ambient
Erudus ID	34bc6e083852403fa5d76f9a78ad1755
Specification Type	Generic
Inner Component GTIN	8445291255999
Outer Case GTIN	8445291256002



INGREDIENTS

Ingredient Declaration
sugar, **WHEAT** flour (contains calcium, iron, thiamin and niacin), whole **MILK** Powder, cocoa mass, cocoa butter, vegetable fats (palm, shea, palm kernel, sal), whey powder product (**MILK**), skimmed **MILK** powder, emulsifier (lecithins), yeast, raising agent (sodium bicarbonate), glucose syrup, butterfat (**MILK**), whey powder (**MILK**), natural flavourings.

ALLERGENS

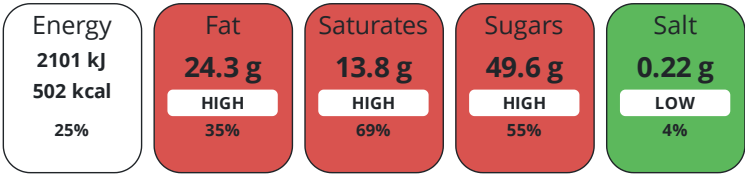
Product Contains:	
Celery/Celeriac	No
Cereals Containing Gluten	Yes
Barley	No
Oats	No
Rye	No
Wheat (including Spelt and Khorasan)	Yes
Crustacea	No
Eggs	No
Fish	No
Lupin	No
Milk	Yes
Molluscs	No
Mustard	No
Nuts (Tree)	No
Almond nuts	No
Brazil nuts	No
Cashew nuts	No
Hazelnuts	No
Macadamia (Queensland) nuts	No
Pecan nuts	No
Pistachio nuts	No
Walnuts	No
Peanuts	No
Sesame Seeds	No
Soybeans	No
Sulphur Dioxide and Sulphites	No

DIET SUITABILITY

Vegan Diet	No
Halal Diet	No
Vegetarian Diet	Suitable for
Kosher Diet	No

NUTRITIONAL
INFORMATION

Each 100g/ml portion contains:



of your reference intake.
Typical values per 100g/ml : Energy 502kcal / 2101kJ

Nutrient	per 100g	RI per 100g
Energy (kJ)	2101 kJ	25%
Energy (kcal)	502 kcal	25%
Fat	24.3 g	35%
of which Saturates	13.8 g	69%
Carbohydrate	62.5 g	24%
of which Sugars	49.6 g	55%
Fibre	2.3 g	
Protein	6.9 g	14%
Salt	0.22 g	4%

Serving Size Description1 bar = 1 serving

HANDLING &
STORAGE
INFORMATION

Directions For Use

Ready to eat

Storage Instructions

Store cool and dry

ORIGIN

Product Country of OriginUnited Kingdom

CONTACT
INFORMATION

Origin of the Primary Ingredient

Address

Nestle UK
Contact Us: Nestle UK Ltd
Nestle UK Ltd
PO Box 207
York
YO91 1WS

Complaints Contact

consumer.services@uk.nestle.com

P: (Phone) 0800 00 00 30 (UK)

The information on the [Erudus System](#) has been supplied by the manufacturers of the products and, whilst the owners of the Erudus System take steps to ensure the information is regularly updated, they give no warranty and no guarantee that the information is accurate. Product information and ingredients may change, please always read product labels carefully in addition to using the information provided by Erudus.

We do not accept liability for any inaccuracies or incorrect information contained on this site.
Please visit <http://www.erudus.com/terms-and-conditions> for full terms and conditions.