

Rich Sauces Great Taste Made Simple Garlic Mayo 6 x 1 Litre

Garlic Mayo

PRODUCT DESCRIPTION
Garlic Mayo Smooth and thick Off white with green speckles

Brand	Rich Sauces
Manufacturer Product Code	RSGARMAY1X6
Product Type	Food
Product Category	Sauces & Dips
Storage Type	Ambient
Erudus ID	13e757554a1d4b2d867859122b580f35
Specification Type	Generic
Inner Pack GTIN	5060051295669
Outer Case GTIN	15060051295666



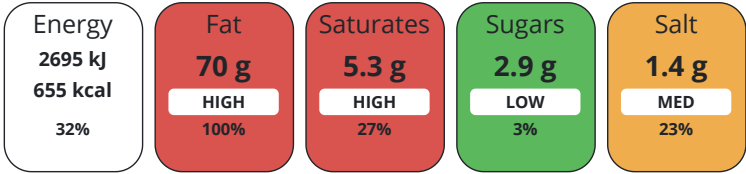
INGREDIENTS

Ingredient Declaration
Rapeseed Oil, Water, Spirit Vinegar, Sugar, Garlic Powder (2%), Salt, Modified Starch, Parsley, Flavouring, Stabiliser:Xanthan Gum, Colour:Carotene, Antioxidant: Calcium Disodium EDTA.

ALLERGENS

<i>Product Contains:</i>			
Celery/Celeriac	No	Mustard	No
Cereals Containing Gluten	No	Nuts (Tree)	No
Barley	No	Almond nuts	No
Oats	No	Brazil nuts	No
Rye	No	Cashew nuts	No
Wheat (including Spelt and Khorasan)	No	Hazelnuts	No
Crustacea	No	Macadamia (Queensland) nuts	No
Eggs	No	Pecan nuts	No
Fish	No	Pistachio nuts	No
Lupin	No	Walnuts	No
Milk	No	Peanuts	No
Molluscs	No	Sesame Seeds	No
		Soybeans	No
		Sulphur Dioxide and Sulphites	No
Vegan Diet	Suitable for	Vegetarian Diet	Suitable for
Halal Diet	No	Kosher Diet	No

Each 100g/ml portion contains:



of your reference intake.

Typical values per 100g/ml : Energy 655kcal / 2695kJ

Nutrient	per 100g	RI per 100g	per 30g serving	RI per 30g serving
Energy (kJ)	2695 kJ	32%	808.5	10%
Energy (kcal)	655 kcal	33%	196.5	10%
Fat	70 g	100%	21 g	30%
of which Saturates	5.3 g	27%	1.59 g	8%
Carbohydrate	5.3 g	2%	1.59 g	1%
of which Sugars	2.9 g	3%	0.87 g	1%
Protein	0.4 g	1%	0.12 g	0%
Salt	1.4 g	23%	0.42 g	7%

Serving Size	30 g
Number of Servings	33 Servings

Source of Nutritional Information Calculation from known/accepted datasets

Directions For Use

Ready to eat

Storage Instructions

Ambient Product

Storage Instructions After Opening

Refridgerate Once Opened, Use Within 8 Weeks.

Product Country of Origin Northern Ireland

Origin of the Primary Ingredient

Address	Technical Contact
Rich Sauces	Lynsey Mawhinney
34 Jubilee Road	QA Team Lead
Newtownards	lynsey.mawhinney@richsauces.com
Down	
BT23 6YH	P: (Phone) +44 2891 819004
England	
P: (Phone) 02891819004	
Complaints Contact	Commercial Contact
Lynsey Mawhinney	Pam Gourley
QA Team Lead	Sales Manager
lynsey.mawhinney@richsauces.com	pam@richsauces.com
P: (Phone) +44 2891 819004	P: (Phone) +44 2891 819004

The information on the [Erudus System](#) has been supplied by the manufacturers of the products and, whilst the owners of the Erudus System take steps to ensure the information is regularly updated, they give no warranty and no guarantee that the information is accurate. Product information and ingredients may change, please always read product labels carefully in addition to using the information provided by Erudus.

We do not accept liability for any inaccuracies or incorrect information contained on this site.
Please visit <http://www.erudus.com/terms-and-conditions> for full terms and conditions.