

Changed Jan 09, 2025 15:55

Reviewed Jan 09, 2025 15:55

Erudus ID f536b2bd041146bab578996babde4bd6

Version 2.0

Status Published

# Gourmet Chilli Jam 6 x 1.4kg

Gourmet Chilli Jam

## PRODUCT DESCRIPTION

A sweet and sour sticky rich reddy brown sauce with medium pieces. Smoky chilli flavour.

Manufacturer Product Code	SH14GCJ6
Product Type	Food
Product Category	Condiments
Storage Type	Ambient
Erudus ID	f536b2bd041146bab578996babde4bd6
Specification Type	Generic



Inner Component GTIN	5020332112641
Outer Case GTIN	05020332161908



## INGREDIENTS

### Ingredient Declaration

Sugar, tomatoes (25%), tomato puree (9%), spirit vinegar, water, sultanas, dried onion, modified maize starch, rapeseed oil, salt, jalapeño peppers (0.7%), garlic, ground ginger, colour (ammonia caramel), ground chipotles, preservative (potassium sorbate), thickener (xanthan gum), smoked paprika.

## ALLERGENS

*Product Contains:*

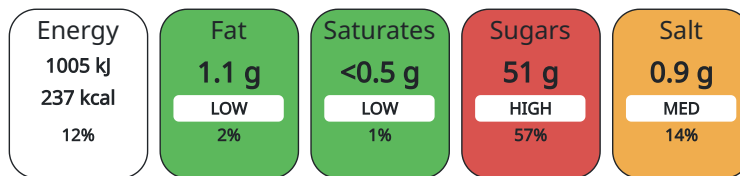
Celery/Celeriac	No	Mustard	No
Cereals Containing Gluten	No	Nuts (Tree)	No
Barley	No	Almond nuts	No
Oats	No	Brazil nuts	No
Rye	No	Cashew nuts	No
Wheat (including Spelt and Khorasan)	No	Hazelnuts	No
Crustacea	No	Macadamia (Queensland) nuts	No
Eggs	No	Pecan nuts	No
Fish	No	Pistachio nuts	No
Lupin	No	Walnuts	No
Milk	No	Peanuts	No
Molluscs	No	Sesame Seeds	No
		Soybeans	No
		Sulphur Dioxide and Sulphites	No

## DIET SUITABILITY

<b>Vegan Diet</b>	Suitable for	<b>Vegetarian Diet</b>	Suitable for
<b>Halal Diet</b>	No	<b>Kosher Diet</b>	No

NUTRITIONAL  
INFORMATION AS  
SOLD

Each 100g/ml portion contains:



of your reference intake.

Typical values per 100g/ml : Energy 237kcal / 1005kJ

Nutrient	per 100g	RI per 100g
Energy (kJ)	1005 kJ	12%
Energy (kcal)	237 kcal	12%
Fat	1.1 g	2%
of which Saturates	0.1 g	1%
Carbohydrate	55 g	21%
of which Sugars	51.2 g	57%
Fibre	0.9 g	
Protein	1.1 g	2%
Salt	0.85 g	14%
Sodium	340 mg	

HANDLING &  
STORAGE  
INFORMATION**Directions For Use**

As a condiment with all sorts of burgers, sandwiches sausages, etc.

**Storage Instructions**

dry and ambient. Once opened store in a refrigerator and use within 4 weeks.

## ORIGIN

**Product Country of Origin** United Kingdom**Additional Origin Details**

Produced in Huddersfield

**Origin of the Primary Ingredient**CONTACT  
INFORMATION**Address**

The Foodfellas  
6-9 The Square  
Stockley Park  
UB11 1FW  
East Uxbridge  
Middx  
England

technical@thefoodfellas.co.uk  
+44 204 526 6777

**Commercial**

Account Manager  
sales@thefoodfellas.co.uk  
0204 526 6777  
National Account Manager

The information on the [Erudus System](#) has been supplied by the manufacturers of the products and, whilst the owners of the Erudus System take steps to ensure the information is regularly updated, they give no warranty and no guarantee that the information is accurate. Product information and ingredients may change, please always read product labels carefully in addition to using the information provided by Erudus.

We do not accept liability for any inaccuracies or incorrect information contained on this site.  
Please visit <http://www.erudus.com/terms-and-conditions> for full terms and conditions.