

690176

69306 Toffee and Banana Loaf Cake

Toffee And Banana Loaf Cake

PRODUCT DESCRIPTION

Rich toffee and banana flavour sponge topped with caramel and toffee pieces.

Brand	Lomond Fine Foods Ltd
Manufacturer Product Code	69306
Product Type	Food
Product Category	Cakes and Tarts
Storage Type	Frozen
Erudus ID	df7020b9805545d3be5edab70e606a97
Specification Type	Bakery Products



Inner Component GTIN	5060268090712
Outer Case GTIN	5060268090712



INGREDIENTS

Ingredient Declaration

Cake Mix (Sugar, WHEAT Flour (WHEAT Flour, Calcium Carbonate, Iron, Niacin,Thiamin), Rapeseed Oil, Modified Starch, Whey Powder (MILK), Emulsifiers (Mono- and Diglycerides of Fatty Acids, Polyglycerol Esters of Fatty Acids, Sodium Stearoyl-2-lactylate), Raising Agents (Diphosphates, Sodium Carbonates), WHEAT Protein, Rice Starch, Potato Starch, Flavouring, Salt, Stabilizer (Polyphosphates, Carboxy Methyl Cellulose)), Pasteurised Liquid whole EGG, Water, Rapeseed Oil, Sugar, Molasses, Toffee Flavouring , Banana Flavouring, Caramel (Partially Inverted Sugar Syrup, Glucose Syrup (SULPHITES), Sugar, Salted Butter (Butter (MILK), Salt), Water, Sweetened Condensed Milk (MILK, Sugar), Modified Corn Starch, Salt, Stabiliser (Pectins), Emulsifier (SOYA Lecithin), Preservative (Potassium Sorbate), Flavouring (contains MILK)), Toffee Pieces (3%) (Sugar, Glucose Syrup, Sweetened Condensed Milk (MILK, Sugar), Palm Oil, Butter Oil (MILK), Natural Flavouring, Processing Aid (Wax Coating), Vegetable Oil (Coconut Oil), Carnauba Wax).

ALLERGENS

Product Contains:

Celery/Celeriac	No
Cereals Containing Gluten	Yes
Barley	May Contain
Oats	May Contain
Rye	No
Wheat (including Spelt and Khorasan)	Yes
Crustacea	No
Eggs	Yes
Fish	No
Lupin	No
Milk	Yes
Molluscs	No

Mustard	No
Nuts (Tree)	May Contain
Almond nuts	May Contain
Brazil nuts	No
Cashew nuts	No
Hazelnuts	May Contain
Macadamia (Queensland) nuts	No
Pecan nuts	No
Pistachio nuts	May Contain
Walnuts	May Contain
Peanuts	No
Sesame Seeds	No
Soybeans	Yes
Sulphur Dioxide and Sulphites	Yes

Risk Source:

Barley (Risk Source)	Line
Tree Nuts (Risk Source)	Line
Hazelnuts (Risk Source)	Line
Walnuts (Risk Source)	Line

Oats (Risk Source)	Line
Almond nuts (Risk Source)	Line
Pistachio nuts (Risk Source)	Line

Additional Allergen Information

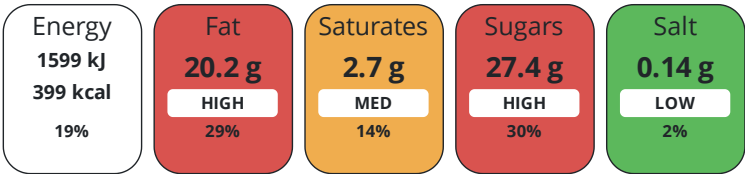
For allergens, including cereals containing gluten, refer to ingredients in CAPITALS May contain traces of: oats, barley and tree nuts

DIET
SUITABILITY

Vegan Diet	No	Vegetarian Diet	Suitable for
Halal Diet	No	Kosher Diet	No

NUTRITIONAL
INFORMATION

Each 100g/ml portion contains:



of your reference intake.

Typical values per 100g/ml : Energy 399kcal / 1599kJ

Nutrient	per 100g	RI per 100g
Energy (kJ)	1599 kJ	19%
Energy (kcal)	399 kcal	20%
Fat	20.2 g	29%
of which Saturates	2.7 g	14%
Carbohydrate	44.9 g	17%
of which Sugars	27.4 g	30%
Fibre	0.7 g	
Protein	4.8 g	10%
Salt	0.14 g	2%

HANDLING &
STORAGE
INFORMATION

Directions For Use

Frozen: 18 months from date of manufacture Once opened store in an airtight container and consume within 5 days

Storage Instructions

Store at -18°C or colder. Defrost for 6 - 8 hours before serving. Ambient: Store in a cool, dry place.

ORIGIN

Product Country of Origin United Kingdom

Additional Origin Details

Produced in Scotland

Origin of the Primary Ingredient

Address

Lomond Fine Foods Ltd
75 Keppochhill Drive
70 Spiersbridge Road, Thornliebank, Glasgow, G46 7SN
Springburn
Glasgow
G21 1HX
Scotland

CONTACT
INFORMATION

P: (Phone) 0141 353 6777

The information on the [Erudus System](#) has been supplied by the manufacturers of the products and, whilst the owners of the Erudus System take steps to ensure the information is regularly updated, they give no warranty and no guarantee that the information is accurate. Product information and ingredients may change, please always read product labels carefully in addition to using the information provided by Erudus.

We do not accept liability for any inaccuracies or incorrect information contained on this site.
Please visit <http://www.erudus.com/terms-and-conditions> for full terms and conditions.