

003015

CADBURY 36G WISPA SGL 48CA

Cadbury 36g Wispa Sgl 48x36g

PRODUCT DESCRIPTION

Textured milk chocolate bar.

Brand	Mondelez UK Ltd
Manufacturer Product Code	4015891
Product Type	Food
Product Category	Confectionery
Storage Type	Ambient
Erudus ID	8173d524aea54f99b3e3c2dd245fddfd
Specification Type	Generic



Inner Component GTIN	07622210470126
Outer Case GTIN	07622210001788



INGREDIENTS

Ingredient Declaration

Ingredients: MILK, sugar, cocoa butter, cocoa mass, vegetable fats (palm, shea), whey powder (from MILK), emulsifier (E442), flavourings.

Ingredient Statements

MILK SOLIDS 14% MINIMUM. COCOA SOLIDS 25% MINIMUM. CONTAINS VEGETABLE FATS IN ADDITION TO COCOA BUTTER.

ALLERGENS

Product Contains:			
Celery/Celериac	No	Mustard	No
Cereals Containing Gluten	No	Nuts (Tree)	May Contain
Barley	No	Almond nuts	May Contain
Oats	No	Brazil nuts	May Contain
Rye	No	Cashew nuts	May Contain
Wheat (including Spelt and Khorasan)	No	Hazelnuts	May Contain
Crustacea	No	Macadamia (Queensland) nuts	May Contain
Eggs	No	Pecan nuts	May Contain
Fish	No	Pistachio nuts	May Contain
Lupin	No	Walnuts	May Contain
Milk	Yes	Peanuts	No
Molluscs	No	Sesame Seeds	No
		Soybeans	No
		Sulphur Dioxide and Sulphites	No

Risk Source:

DIET
SUITABILITY

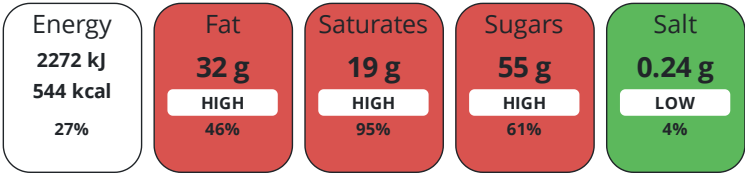
NUTRITIONAL
INFORMATION

Additional Allergen Information

MAY CONTAINS NUTS.

Vegan Diet	No	Vegetarian Diet	Suitable for
Halal Diet	No	Kosher Diet	No

Each 100g/ml portion contains:



of your reference intake.

Typical values per 100g/ml : Energy 544kcal / 2272kJ

Nutrient	per 100g	RI per 100g
Energy (kJ)	2272 kJ	27%
Energy (kcal)	544 kcal	27%
Fat	32 g	46%
of which Saturates	19 g	95%
Carbohydrate	56 g	22%
of which Sugars	55 g	61%
Fibre	2.2 g	
Protein	6.6 g	13%
Salt	0.24 g	4%

Serving Size Description	1 portion per pack.
Number of Servings	1 Servings

HANDLING &
STORAGE
INFORMATION

Directions For Use

Ready To Eat

Storage Instructions

STORE IN A DRY PLACE. PROTECT FROM HEAT.

ORIGIN

Product Country of Origin	Great Britain
---------------------------	---------------

Origin of the Primary Ingredient

Address	Technical Contact
Mondelez UK Ltd	Tomas Sakalik
PO Box 12	Publication Expert
Bournville Lane	tomas.sakalik@mdlz.com
Bournville	
Birmingham	
B30 2LU	
England	

P: (Phone) +44 1214 582 000

CONTACT
INFORMATION

The information on the [Erudus System](#) has been supplied by the manufacturers of the products and, whilst the owners of the Erudus System take steps to ensure the information is regularly updated, they give no warranty and no guarantee that the information is accurate. Product information and ingredients may change, please always read product labels carefully in addition to using the information provided by Erudus.

