

# NielsenIQ Brandbank

---

## Fanta Fruit Twist 500ml



EAN  
54493957

Target market(s)  
GB

# Components

## Ingredients

Carbonated Water  
Sugar  
Fruit Juices from Concentrate 4.4% (Orange 3.4%, Peach 0.5%, Apple 0.4%, Passion Fruit 0.1%)  
Vegetable and Plant Concentrates (Carrot, Safflower)  
Acids (Citric Acid, Malic Acid)  
Sweeteners (Acesulfame K, Aspartame)  
Preservative (Potassium Sorbate)  
Natural Flavouring  
Stabilisers (Glycerol Esters of Wood Rosins, Guar Gum)

## Nutrition

	100 ml	250 ml (%*)
Energy :	80 kJ	200 kJ (2%)
	19 kcal	48 kcal (2%)
Fat :	0 g	0 g (0%)
of which saturates :	0 g	0 g (0%)
Carbohydrate :	4.5 g	11 g (4%)
of which sugars :	4.4 g	11 g (12%)
Protein :	0 g	0 g (0%)
Salt :	0 g	0 g (0%)

\* Reference intake of an average adult (8 400 kJ/ 2 000 kcal)

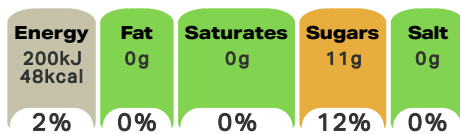
## Calculated Nutrition

	per 100ml	250 ml
Energy (kJ)	80	200
Energy (kcal)	19	48
Fat (g)	0	
of which saturates (g)	0	0
Carbohydrate (g)	4.5	11
of which sugars (g)	4.4	11
Protein (g)	0	0
Salt (g)	0	0

## Front of Pack Nutrition

### Per Portion

A 250ml serving contains



Per 100ml: 80 kJ / 19 kcal

Reference intake of an average adult (8 400 kJ/ 2 000 kcal)

## Nutrition Other Text

Reference intake of an average adult (8 400 kJ/ 2 000 kcal)

## Reference Intake Statement

Reference Intake Statement - Reference intake of an average adult (8 400 kJ/ 2 000 kcal)

## Product Description

### Brand

Fanta

### Features

Made with fruit juice  
No artificial colours  
With natural flavours  
Natural flavourings  
Added preservatives  
GMO's or GM protein  
Intense sweeteners  
Suitable for vegans  
Suitable for vegetarians

### Standardised Brand

Brand - Fanta

### Regulated Product Name

Sparkling Mixed Fruit Drink with Sugar and Sweeteners

## Marketing

### Company Name

CCEP, GB

### Company Address

UB8 1EZ.

## Health & Lifestyle

### Lifestyle

- Suitable for Vegans
- Suitable for Vegetarians

### Allergy Advice

Barley - Free From  
Celery - Free From  
Cereals Containing Gluten - Free From  
Crustaceans - Free From  
Eggs - Free From  
Fish - Free From  
Lupin - Free From  
Milk - Free From  
Molluscs - Free From  
Mustard - Free From  
Nuts - Free From  
Oats - Free From  
Peanuts - Free From  
Rye - Free From  
Sesame - Free From  
Soya - Free From  
Sulphur Dioxide/Sulphites - Free From  
Wheat - Free From

### Additives

Artificial Colours - Free From  
Genetically Modified Ingredients - Contains  
Sweeteners - Contains

## Storage & Usage

### Storage Type

#### Type

Ambient

### Preparation and Usage

Best served chilled.

### Storage

Best before: See side of cap or bottle neck  
Store cool and dry

### Date Marking Type

- Best Before

## Brandbank Captured Pack Data

### Pack Size

500ml

### Numeric Size

Numeric Size - 500

### Pack Type

Type - Plastic Bottle

## Customer Services

### Manufacturers Address

CCEP, GB,  
UB8 1EZ.

### Return To

CCEP, GB,  
UB8 1EZ.  
Coca-Cola.co.uk

### Web Address

Coca-Cola.co.uk

## Extended Data

### Safety Warning

Contains a Source of Phenylalanine.

### Description Breakdown

Variant - Fruit Twist