

Changed Apr 14, 2025 11:23

Reviewed Apr 14, 2025 11:23

Erudus ID de6be97cfc3b4199baa3a355eb6a8480

Version 2.0

Status Published



Beef Chilli Con Carne 350g

Beef Chilli Con Carne 12x350g

PRODUCT DESCRIPTION

Minced British Beef, Red Kidney Beans, Red and Green Peppers in a Chilli Sauce

Brand	The Authentic Curry Company Limited
Manufacturer Product Code	OCC72
Product Type	Food
Product Category	Ready Meals
Storage Type	Frozen
Erudus ID	de6be97cfc3b4199baa3a355eb6a8480
Specification Type	Generic

Outer Case GTIN	05060026893180
-----------------	----------------

INGREDIENTS

Ingredient Declaration

Water, Onions, Minced Beef (17%), Red Kidney Beans (12%), Red and Green Peppers, Chopped Tomatoes, Tomato Puree, Modified Maize Starch, Brown Sugar, Beef Stock [Beef, Onion, Tomato, Carrot Extract, Herbs, Spices, Garlic, Salt, Glucose Syrup, Flavourings, Maltodextrin. Yeast Extract, Rapeseed Oil, Colour: Ammonia Caramel, Sugar], Colour: Ammonia Caramel, Garlic Puree, Ground Cumin, Paprika, Chilli Powder, Oregano.

ALLERGENS

Product Contains:

Celery/Celeriac	No
Cereals Containing Gluten	No
Barley	No
Oats	No
Rye	No
Wheat (including Spelt and Khorasan)	No
Crustacea	No
Eggs	No
Fish	No
Lupin	No
Milk	No
Molluscs	No

Mustard	No
Nuts (Tree)	No
Almond nuts	No
Brazil nuts	No
Cashew nuts	No
Hazelnuts	No
Macadamia (Queensland) nuts	No
Pecan nuts	No
Pistachio nuts	No
Walnuts	No
Peanuts	No
Sesame Seeds	No
Soybeans	No
Sulphur Dioxide and Sulphites	No

Additional Allergen Information

Produced in a factory or made with ingredients from suppliers that use nuts, gluten, crustaceans, fish, eggs, peanuts, soya, milk, celery, mustard, sesame, sulphur dioxide and molluscs

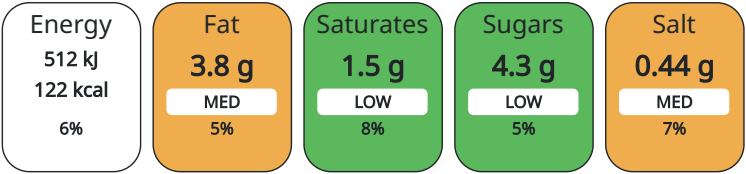
DIET SUITABILITY

Vegan Diet	No
Halal Diet	No

Vegetarian Diet	No
Kosher Diet	No

NUTRITIONAL
INFORMATION AS
SOLD

Each 100g/ml portion contains:



of your reference intake.

Typical values per 100g/ml : Energy 122kcal / 512kJ

Nutrient	per 100g	RI per 100g
Energy (kJ)	512 kJ	6%
Energy (kcal)	122 kcal	6%
Fat	3.8 g	5%
of which Saturates	1.5 g	8%
Carbohydrate	12.1 g	5%
of which Sugars	4.3 g	5%
Fibre	1.7 g	
Protein	8.2 g	16%
Salt	0.44 g	7%
Sodium	176 mg	

Source of Nutritional Information Calculation from known/accepted datasets

Directions For Use

All appliances vary, the following are guidelines only. Microwave (800 Watt or Category D). Reheat from Frozen. Pierce film several times and microwave on full power for 3 minutes, move product from side to side and microwave on full power for a further 3 minutes. When heated carefully remove the film lid. Ensure the product is piping hot throughout before serving. Stir and serve. Do not reheat.

Storage Instructions

Store at -18c or below.

ORIGIN

Product Country of Origin Great Britain

Additional Origin Details

Produced in Wales

Origin of the Primary Ingredient United Kingdom

MARKETING
INFORMATION

Marketing Description

Minced British Beef, Red Kidney Beans, Red and Green Peppers in a Chilli Sauce

CONTACT
INFORMATION

Address
The Authentic Curry Company Limited
Unit 46-47
Hirwaun Industrial Estate, Hirwaun
Aberdare
South Wales
CF44 9UP
Wales

P: (Phone) 01685 810044

Complaints Contact
Kay Tonkin
Technical Manager
kay.tonkin@authenticcurry.co.uk

P: (Phone) 01685 810044

Technical Contact
Kay Tonkin
Technical Manager
kay.tonkin@authenticcurry.co.uk

P: (Phone) 01685 810044

Commercial Contact
Daniel Benbow
Commercial Manager
daniel.benbow@authenticcurry.co.uk

P: (Phone) 01685 810044

The information on the [Erudus System](#) has been supplied by the manufacturers of the products and, whilst the owners of the Erudus System take steps to ensure the information is regularly updated, they give no warranty and no guarantee that the information is accurate. Product information and ingredients may change, please always read product labels carefully in addition to using the information provided by Erudus.

We do not accept liability for any inaccuracies or incorrect information contained on this site.
Please visit <http://www.erudus.com/terms-and-conditions> for full terms and conditions.