

Changed Jan 01, 2026 00:00

Reviewed Nov 14, 2025 09:11

Erudus ID 6c4b8c003d814ff3b1f41263ea77db87

Version 3.0

Status Published

700057

# Eccles Cake x24 FROZEN

Eccles Cake 24x90g

## PRODUCT DESCRIPTION

A vine fruit filling enriched with butter encased in a hand folded puff pastry shell

Manufacturer Product Code HOP12/FROZEN 8/NWBAK05

Product Type Food

Product Category Cakes and Tarts

Storage Type Frozen

Erudus ID 6c4b8c003d814ff3b1f41263ea77db87

Specification Type Bakery Products

Inner Component GTIN 5031838000356

Outer Case GTIN 5031838910419



## INGREDIENTS

### Ingredient Declaration

INGREDIENTS: WHEAT Flour (WHEAT Flour, Calcium Carbonate, Niacin, Iron, Folic Acid, Thiamin), Raisins (27%), Margarine (Palm and Rapeseed Vegetable Oils, Water, Salt, Emulsifier (Mono-and diglycerides of Fatty Acids), Flavourings), Brown Sugar, Butter (MILK), Sugar, Water.

For allergens, including cereals containing gluten, please see ingredients in CAPITALS

### Ingredient Statements

May contain eggs and nuts

## ALLERGENS

Product Contains:

Celery/Celeryiac	No	Mustard	No
Cereals Containing Gluten	Yes	Nuts (Tree)	May Contain
Barley	No	Almond nuts	May Contain
Oats	No	Brazil nuts	No
Rye	No	Cashew nuts	No
Wheat (including Spelt and Khorasan)	Yes	Hazelnuts	No
Crustacea	No	Macadamia (Queensland) nuts	No
Eggs	May Contain	Pecan nuts	No
Fish	No	Pistachio nuts	No
Lupin	No	Walnuts	May Contain
Milk	Yes	Peanuts	No
Molluscs	No	Sesame Seeds	No
		Soybeans	No
		Sulphur Dioxide and Sulphites	No

*Risk Source:*

<b>Eggs (Risk Source)</b>	Line	<b>Tree Nuts (Risk Source)</b>	Line
<b>Almond nuts (Risk Source)</b>	Factory	<b>Walnuts (Risk Source)</b>	Line

**Additional Allergen Information**

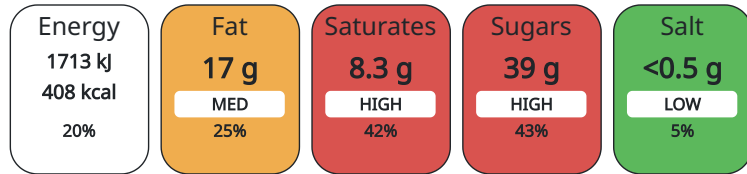
May contain traces of egg and nuts [almonds and walnuts]

DIET SUITABILITY

<b>Vegan Diet</b>	No	<b>Vegetarian Diet</b>	Suitable for
<b>Halal Diet</b>	No	<b>Kosher Diet</b>	No

NUTRITIONAL  
INFORMATION AS  
SOLD

Each 100g/ml portion contains:



of your reference intake.

Typical values per 100g/ml : Energy 408kcal / 1713kj

Nutrient	per 100g	RI per 100g
Energy (kj)	1713 kj	20%
Energy (kcal)	408 kcal	20%
Fat	17.2 g	25%
of which Saturates	8.3 g	42%
Carbohydrate	57.3 g	22%
of which Sugars	38.8 g	43%
Protein	4.5 g	9%
Salt	0.3 g	5%

**Source of Nutritional Information**      Manufacturers analysis

HANDLING &  
STORAGE  
INFORMATION

**Directions For Use**

Remove from cardboard outer and defrost for a minimum of 90 minutes in cool dry ambient conditions away from direct sunlight. BBE = day of defrost + 3 days (unwrapped) or 14 days (wrapped) Do not refreeze

**Storage Instructions**

Store below -18 C. In a commercial cold store this product will retain its quality until the bbe date shown. In a deep freeze cabinet this product will retain its quality for 3 months after purchase, or upto the bbe date, whichever is the sooner.

ORIGIN

**Product Country of Origin**      United Kingdom

**Additional Origin Details**

MADE IN A CRAFT BAKERY

**Origin of the Primary Ingredient**      Not Applicable

CONTACT  
INFORMATION

**Address**

Margaret Hall  
Scar Bank  
Millers Road  
CV34 5DB  
Warwick  
England

technical@margarethall.com  
01926 492574

The information on the [Erudus System](#) has been supplied by the manufacturers of the products and, whilst the owners of the Erudus System take steps to ensure the information is regularly updated, they give no warranty and no guarantee that the information is accurate. Product information and ingredients may change, please always read product labels carefully in addition to using the information provided by Erudus.

We do not accept liability for any inaccuracies or incorrect information contained on this site.  
Please visit <http://www.erudus.com/terms-and-conditions> for full terms and conditions.