

700513

# Mini Choc Iced Donuts 14.5g (1 x 200)

Mini Choc Iced Donuts 14.5g (1 X 200)

PRODUCT DESCRIPTION

Mini, ring-shaped, cake-style donut topped with chocolate flavoured icing (13%). Packed 4 x 50. Suitable for vegetarians. (1 x 200)

Brand	Central Foods Group Limited
Manufacturer Product Code	KB1700
Product Type	Food
Product Category	Bakery - General
Storage Type	Frozen
Erudus ID	0b00386dc7a240049b3b9787c4193999
Specification Type	Legacy



Outer Case GTIN05060062473599



INGREDIENTS

**Ingredient Declaration**  
Fortified Wheat Flour (**WHEAT** Flour, Calcium Carbonate, Niacin, Iron, Thiamin), Palm Oil, Chocolate Flavour Topping (13%) [Sugar, Palm Oil, Palm Kernel Oil, Fat Reduced Cocoa Powder, Whey Powder (**MILK**), Skimmed **MILK** Powder, Emulsifier (**SOYA** Lecithins), Flavouring], Sugar, Water, Rapeseed Oil, Raising Agents (Diphosphates, Potassium Carbonates), Skimmed **MILK** Powder, Defatted **SOYA** Flour, Whey Powder (**MILK**), Dextrose, Free Range **EGG** Yolk Powder, Emulsifiers (**SOYA** Lecithins, Mono- and Diglycerides of Fatty Acids, Sodium Stearoyl-2-Lactylate), Maize Starch, **OAT** Fibre, **MILK** Protein.

ALLERGENS

Product Contains:

Celery/Celeriac	No
Cereals Containing Gluten	Yes
Barley	No
Oats	Yes
Rye	No
Wheat (including Spelt and Khorasan)	Yes
Gluten content <20ppm	No
Crustacea	No
Eggs	Yes
Fish	No
Lupin	No
Milk	Yes
Molluscs	No

Mustard	No
Nuts (Tree)	No
Almond nuts	No
Brazil nuts	No
Cashew nuts	No
Hazelnuts	No
Macadamia (Queensland) nuts	No
Pecan nuts	No
Pistachio nuts	No
Walnuts	No
Peanuts	No
Sesame Seeds	No
Soybeans	Yes
Sulphur Dioxide and Sulphites	No

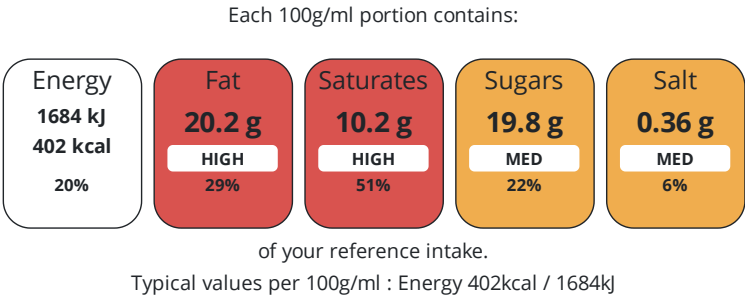
Additional Allergen Information

For allergens, including cereals containing gluten, see ingredients in CAPITALS.

DIET  
SUITABILITY

Suitable for Coeliacs	No	Halal Diet	No
Kosher Diet	No	Vegetarian Diet	Suitable for
Vegan Diet	No		

NUTRITIONAL  
INFORMATION



Nutrient	per 100g/ml	RI per 100g/ml	per 14.5g/ml serving	RI per 14.5g/ml serving
Energy (kJ)	1684 kJ	20%	244.2 kJ	3%
Energy (kcal)	402 kcal	20%	58.3 kcal	3%
Fat	20.2 g	29%	2.9 g	4%
of which Saturates	10.2 g	51%	1.5 g	8%
Carbohydrate	48.7 g	19%	7.1 g	3%
of which Sugars	19.8 g	22%	2.9 g	3%
Fibre	1.7 g		0.2 g	
Protein	5.7 g	11%	0.8 g	2%
Salt	0.36 g	6%	0.1 g	2%
Sodium	145 mg		21 mg	
Serving Size	14.5 g			

HANDLING &  
STORAGE  
INFORMATION

**Directions For Use**  
From Frozen unless otherwise stated DIRECTIONS FOR USE (from frozen): Defrost at room temperature (approx. 20°C) for 45 mins.  
Defrosted shelf-life = 48 hrs (covered at room temperature). Ensure mini chocolate iced donuts are fully defrosted before serving.

**Storage Instructions**  
Keep Frozen. Store at -18°C or below

ORIGIN

Product Country of Origin	United Kingdom
Additional Origin Details	United Kingdom

CONTACT  
INFORMATION

Address

Central Foods Group Limited  
Maple Court  
Ash Lane  
Collingtree  
Northamptonshire  
NN4 0NB  
England

P: (Phone) 01604 858 522

Complaints Contact

Karen Wright  
Customer Care Admin Assistant  
kwright@centralfoods.co.uk

P: (Phone) 01604 878 299

Technical Contact

Chris Stobart  
Technical Manager  
technical@centralfoods.co.uk

P: (Phone) 01604 878 276

Commercial Contact

Oliver Sampson  
Managing Director  
osampson@centralfoods.co.uk

P: (Phone) 07715 073 273

The information on the [Erudus System](#) has been supplied by the manufacturers of the products and, whilst the owners of the Erudus System take steps to ensure the information is regularly updated, they give no warranty and no guarantee that the information is accurate. Product information and ingredients may change, please always read product labels carefully in addition to using the information provided by Erudus.

We do not accept liability for any inaccuracies or incorrect information contained on this site.  
Please visit <http://www.erudus.com/terms-and-conditions> for full terms and conditions.