

Changed Apr 17, 2026 13:30

Reviewed Apr 17, 2026 13:30

Erudus ID 8b9a67aae06942fc9cdacbc754b16926

Version 8.0

Status Published

690155

# Peppermint Slice x 12

Peppermint Slice

## PRODUCT DESCRIPTION

Base with biscuit pieces and chocolate flavour coating with the peppermint fudge ice topped with milk chocolate flavour coating, finished with white chocolate flavoured drizzle

Brand	CAKE
Manufacturer	Lomond Fine Foods Ltd
Manufacturer Product Code	22187
Product Type	Food
Product Category	Traybake
Storage Type	Frozen
Erudus ID	8b9a67aae06942fc9cdacbc754b16926
Specification Type	Bakery Products



Inner Pack GTIN 5060268092860

Outer Case GTIN 15060268092867



## INGREDIENTS

### Ingredient Declaration

Milk Chocolate Flavour Topping (Sugar, Vegetable Fats (Palm Kernel, Palm), Whey Powder (**MILK**), Wheat Flour (**WHEAT** Flour, Calcium Carbonate, Niacin, Iron, Thiamin), Fat Reduced Cocoa Powder, Emulsifier (**SOYA** Lecithin, Polyglycerol Polyricinoleate), Natural Flavouring), Peppermint Fudge Ice (27%) (Sugar, Palm Oil, Rapeseed Oil, Water, Dextrose, Fructose, Skimmed **MILK** Powder, Salt, Emulsifiers (Sucrose Esters of Fatty Acids, Sorbitan Trisetearate, Mono- and Diglycerides of Fatty Acids), Acidity Regulator (Glucono Delta-Lactone), Preservative (Potassium Sorbate), Natural Flavouring, Colour (Copper Complexes of Chlorophyll and Chlorophyllins, Lutein), Biscuit Pieces and Biscuit Crumb (Wheat Flour (**WHEAT** Flour, Calcium Carbonate, Iron, Niacin, Thiamin), Wholemeal **WHEAT** Flour, Vegetable Oils (Palm Oil, Rapeseed Oil), Sugar, Partially Inverted Sugar Syrup, Raising Agents (Sodium Bicarbonate, Ammonium Bicarbonate), Salt), Margarine (Palm Oil, Rapeseed Oil, Water, Salt, Emulsifier (Mono- and Diglycerides of Fatty Acids), Flavouring, Colours (Annatto Bixin, Curcumin)), Invert Sugar Syrup, White Chocolate Flavour Topping (Sugar, Vegetable Fats (Palm Kernel, Coconut), Lactose (**MILK**), Skimmed **MILK** Powder, Emulsifier (**SOYA** Lecithin), Flavours).

ALLERGENS

Product Contains:

Celery/Celery	No	Mustard	No
Cereals Containing Gluten	Yes	Nuts (Tree)	May Contain
Barley	May Contain	Almond nuts	May Contain
Oats	May Contain	Brazil nuts	No
Rye	No	Cashew nuts	No
Wheat (including Spelt and Khorasan)	Yes	Hazelnuts	May Contain
Crustacea	No	Macadamia (Queensland) nuts	No
Eggs	May Contain	Pecan nuts	No
Fish	No	Pistachio nuts	May Contain
Lupin	No	Walnuts	May Contain
Milk	Yes	Peanuts	No
Molluscs	No	Sesame Seeds	No
		Soybeans	Yes
		Sulphur Dioxide and Sulphites	May Contain

Risk Source:

Barley (Risk Source)	Line	Oats (Risk Source)	Line
Eggs (Risk Source)	Line	Tree Nuts (Risk Source)	Line
Almond nuts (Risk Source)	Line	Hazelnuts (Risk Source)	Line
Pistachio nuts (Risk Source)	Line	Walnuts (Risk Source)	Line
Sulphur Dioxide and Sulphites (Risk Source)	Line		

Allergen Statement On Pack

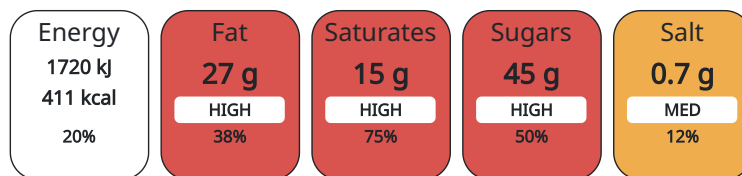
Allergy Advice: For allergens, including cereals containing gluten, see ingredients in bold. May also contain traces of oats, barley, egg, sulphites and treenuts.

DIET SUITABILITY

Vegan Diet	No	Vegetarian Diet	Suitable for
Halal Diet	No	Kosher Diet	No

NUTRITIONAL INFORMATION AS SOLD

Each 100g/ml portion contains:



of your reference intake.

Typical values per 100g/ml : Energy 411kcal / 1720kJ

Nutrient	per 100g	RI per 100g	per 106g serving	RI per 106g serving
Energy (kJ)	1720 kJ	20%	1823.2	22%
Energy (kcal)	411 kcal	21%	435.66	22%
Fat	26.9 g	38%	28.51 g	41%
of which Saturates	14.9 g	75%	15.79 g	79%
Carbohydrate	60.6 g	23%	64.24 g	25%
of which Sugars	45 g	50%	47.7 g	53%
Fibre	0.8 g		0.85 g	
Protein	3.1 g	6%	3.29 g	7%
Salt	0.73 g	12%	0.77 g	13%

<b>Serving Size</b>	106 g
<b>Serving Size Description</b>	one portion
<b>Number of Servings</b>	12 Servings

**Source of Nutritional Information** Calculation from known/accepted datasets

HANDLING &  
STORAGE  
INFORMATION

**Directions For Use**

Keep frozen until ready to defrost

**Storage Instructions**

Storage: Store at -18°C or colder. Defrost for 6 - 8 hours before serving. Ambient: Store in a cool, dry place.

ORIGIN

**Product Country of Origin** Scotland

**Origin of the Primary Ingredient** United Kingdom

CONTACT  
INFORMATION

**Address**

Lomond Fine Foods Ltd  
75 Keppochhill Drive  
70 Spiersbridge Road, Thornliebank, Glasgow, G46 7SN  
G21 1HX  
Springburn  
Glasgow  
Scotland

anne@lomond.lfs.com

0141 353 6777

The information on the [Erudus System](#) has been supplied by the manufacturers of the products and, whilst the owners of the Erudus System take steps to ensure the information is regularly updated, they give no warranty and no guarantee that the information is accurate. Product information and ingredients may change, please always read product labels carefully in addition to using the information provided by Erudus.

We do not accept liability for any inaccuracies or incorrect information contained on this site.  
Please visit <http://www.erudus.com/terms-and-conditions> for full terms and conditions.