

CADBURY CHOCOLATE BAR 45G CARAMEL 48CA

Cadbury Chocolate Bar 45g Caramel 48x45g

PRODUCT DESCRIPTION

CADBURY CHOCOLATE BAR SUPERMIX

Brand	Mondelez UK Ltd
Manufacturer Product Code	968086
Product Type	Food
Product Category	Confectionery
Storage Type	Ambient
Erudus ID	95b680564a08453dad018ddd3cd86175
Specification Type	Generic



Inner Component GTIN	07622300743703
Outer Case GTIN	07622300743697



INGREDIENTS

Ingredient Declaration
MILK**, sugar, glucose syrup, cocoa butter, vegetable fats (palm, shea), glucose-fructose syrup, cocoa mass, whey powder (from MILK), emulsifiers (E442, E471, E476), salt, sodium carbonate, flavourings

Ingredient Statements
**The equivalent of 426ml of fresh liquid milk in every 227g of milk chocolate.

ALLERGENS

Product Contains:	
Celery/Celeriac	No
Cereals Containing Gluten	May Contain
Barley	No
Oats	No
Rye	No
Wheat (including Spelt and Khorasan)	May Contain
Crustacea	No
Eggs	No
Fish	No
Lupin	No
Milk	Yes
Molluscs	No
Mustard	No
Nuts (Tree)	May Contain
Almond nuts	May Contain
Brazil nuts	May Contain
Cashew nuts	May Contain
Hazelnuts	May Contain
Macadamia (Queensland) nuts	May Contain
Pecan nuts	May Contain
Pistachio nuts	May Contain
Walnuts	May Contain
Peanuts	No
Sesame Seeds	No
Soybeans	No
Sulphur Dioxide and Sulphites	No

Risk Source:

DIET
SUITABILITY

NUTRITIONAL
INFORMATION

HANDLING &
STORAGE
INFORMATION

ORIGIN

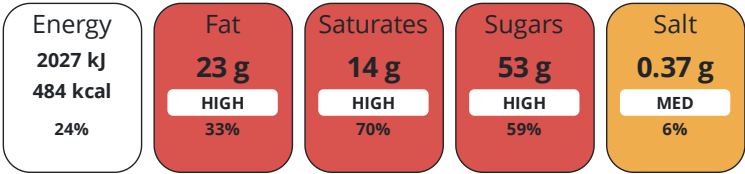
CONTACT
INFORMATION

Additional Allergen Information

MAY CONTAIN NUTS, WHEAT.

Vegan Diet	No	Vegetarian Diet	Suitable for
Halal Diet	No	Kosher Diet	No

Each 100g/ml portion contains:



of your reference intake.

Typical values per 100g/ml : Energy 484kcal / 2027kJ

Nutrient	per 100g	RI per 100g
Energy (kJ)	2027 kJ	24%
Energy (kcal)	484 kcal	24%
Fat	23 g	33%
of which Saturates	14 g	70%
Carbohydrate	63 g	24%
of which Sugars	53 g	59%
Fibre	1.2 g	
Protein	4.7 g	9%
Salt	0.37 g	6%

Directions For Use

Ready To Eat

Storage Instructions

STORE IN A DRY PLACE. PROTECT FROM HEAT.

Product Country of Origin United Kingdom

Origin of the Primary Ingredient

Address	Technical Contact
Mondelez UK Ltd	Tomas Sakalik
PO Box 12	Publication Expert
Bournville Lane	tomas.sakalik@mdlz.com
Bournville	
Birmingham	
B30 2LU	
England	

P: (Phone) +44 1214 582 000

The information on the [Erudus System](#) has been supplied by the manufacturers of the products and, whilst the owners of the Erudus System take steps to ensure the information is regularly updated, they give no warranty and no guarantee that the information is accurate. Product information and ingredients may change, please always read product labels carefully in addition to using the information provided by Erudus.

