

Mocha Cake - 14 Portion

Mocha Cake - 14 Portion 1x1.6kg

PRODUCT DESCRIPTION

Soft sponge filled and topped with a coffee flavour cream, decorated with chocolate coated coffee beans and crushed dark chocolate.

Brand	Love Handmade Cakes (Exquisite Handmade Cakes)
Manufacturer Product Code	FSS14MOCP
Product Type	Food
Product Category	Cakes and Tarts
Storage Type	Frozen
Erudus ID	b711bb9a7b9c49d0af16adb9d11b23a5
Specification Type	Bakery Products
Outer Case GTIN	5060158959310



INGREDIENTS

Ingredient Declaration

Coffee Cream (Icing Sugar (Sugar, Anti-Caking Agent (E341)), Margarine (Palm Fat, Rapeseed Oil, Water, Salt, Emulsifier (E475), Flavouring, Colours (E160b(i), E100)), Natural Flavouring), **Wheat** Flour (**Wheat** Flour, Calcium Carbonate, Iron, Niacin, Thiamine), Sugar, Pasteurised Liquid Whole **Egg**, Rapeseed Oil, Water, Chocolate Coated Coffee Beans (Sugar, Cocoa Mass, Cocoa Butter, Coffee Beans, Emulsifier (Sunflower Lecithin), Flavouring, Glazing Agent (E414), Glucose Syrup, Vanilla Extract), **Wheat** Starch, Humectant (Vegetable Glycerine), Molasses Powder, Raising Agents (E450, E501, E500), Whey Powder (**Milk**), Emulsifiers (E471, E481), Modified Potato Starch, **Wheat Gluten**, Natural Flavouring, Salt, Preservative (E202), Stabilisers (E466, E412)

ALLERGENS

Product Contains:

Celery/Celeriac	No
Cereals Containing Gluten	Yes
Barley	No
Oats	No
Rye	No
Wheat (including Spelt and Khorasan)	Yes
Crustacea	No
Eggs	Yes
Fish	No
Lupin	No
Milk	Yes
Molluscs	No

Risk Source:

Tree Nuts (Risk Source)	Factory
Peanuts (Risk Source)	Factory

Mustard	No
Nuts (Tree)	May Contain
Almond nuts	No
Brazil nuts	No
Cashew nuts	No
Hazelnuts	May Contain
Macadamia (Queensland) nuts	No
Pecan nuts	No
Pistachio nuts	No
Walnuts	No
Peanuts	May Contain
Sesame Seeds	No
Soybeans	May Contain
Sulphur Dioxide and Sulphites	No

Hazelnuts (Risk Source)	Factory
Soybeans (Risk Source)	Factory

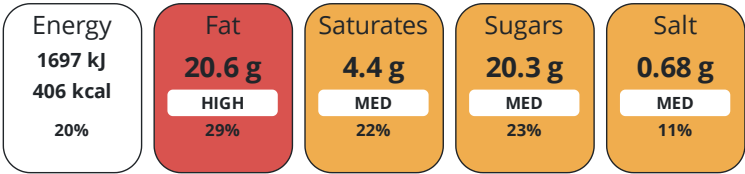
DIET SUITABILITY

Vegan Diet	No
Halal Diet	Suitable for

Vegetarian Diet	Suitable for
-----------------	--------------

NUTRITIONAL
INFORMATION

Each 100g/ml portion contains:



of your reference intake.
Typical values per 100g/ml : Energy 406kcal / 1697kJ

Nutrient	per 100g	RI per 100g
Energy (kJ)	1697 kJ	20%
Energy (kcal)	406 kcal	20%
Fat	20.6 g	29%
of which Saturates	4.4 g	22%
Carbohydrate	51 g	20%
of which Sugars	20.3 g	23%
Protein	3.5 g	7%
Salt	0.68 g	11%

Number of Servings14 Servings

HANDLING &
STORAGE
INFORMATION

Directions For Use
Defrost in a refrigerator and consume within 28 days. Do not refreeze.

Storage Instructions
Distribute and store frozen for up to 12 months from date of manufacture, in temperature below -18°C.

ORIGIN

Product Country of OriginUnited Kingdom

CONTACT
INFORMATION

Origin of the Primary Ingredient	
Address	Technical Contact
Love Handmade Cakes (Exquisite Handmade Cakes)	Anda Donina
Unit 3, Cardigan Trading Estate	Technical Manager
Lennox Road	technical@lovehandmadecakes.com
Leeds	
West Yorkshire	P: (Phone) 0113 289 0283
LS4 2BL	
England	
P: (Phone) 0113 2890283	
Complaints Contact	Commercial Contact
Maria Ulfa	Dale Dewhirst
Technical Assistant	Business Development Manager
technical@lovehandmadecakes.com	dale@lovehandmadecakes.com
P: (Phone) 0113 289 0283	

The information on the [Erudus System](#) has been supplied by the manufacturers of the products and, whilst the owners of the Erudus System take steps to ensure the information is regularly updated, they give no warranty and no guarantee that the information is accurate. Product information and ingredients may change, please always read product labels carefully in addition to using the information provided by Erudus.

