

Changed Jul 21, 2025 10:09

Reviewed Jul 21, 2025 10:09

Erudus ID 4e4e925456914d409c19b5081aba6ebb

Version 2.0

Status Published

# Cherry & Rhubarb Slices 3x20

Cherry & Rhubarb Slices 3x2050kg

## PRODUCT DESCRIPTION

Pound cake with juicy cherries and rhubarb pieces decorated with jelly and coarse granulated sugar.

Manufacturer Product Code	281300
Product Type	Food
Product Category	Desserts
Storage Type	Frozen
Erudus ID	4e4e925456914d409c19b5081aba6ebb
Specification Type	Generic

Inner Component GTIN	4002197092543
Outer Case GTIN	4002197992546



## INGREDIENTS

### Ingredient Declaration

17.2 % sour cherries, 17.2 % rhubarb, vegetable oil (rape), sugar, whole **egg**, starch (**wheat**), water, **wheat** flour, glucose-fructose syrup, modified starch, skimmed **milk** powder, acids (E 341, E 450, E 330), emulsifier (E 471), raising agent (E 500), natural flavouring, salt, gelling agent (E 407), acidity regulator (E 331), thickener (E 410).

## ALLERGENS

Product Contains:

Celery/Celeriac	No	Mustard	No
Cereals Containing Gluten	Yes	Nuts (Tree)	May Contain
Barley	No	Almond nuts	May Contain
Oats	No	Brazil nuts	May Contain
Rye	No	Cashew nuts	May Contain
Wheat (including Spelt and Khorasan)	Yes	Hazelnuts	May Contain
Crustacea	No	Macadamia (Queensland) nuts	May Contain
Eggs	Yes	Pecan nuts	May Contain
Fish	No	Pistachio nuts	May Contain
Lupin	May Contain	Walnuts	May Contain
Milk	Yes	Peanuts	May Contain
Molluscs	No	Sesame Seeds	No
		Soybeans	May Contain
		Sulphur Dioxide and Sulphites	No

*Risk Source:*

<b>Lupin (Risk Source)</b>	Factory	<b>Tree Nuts (Risk Source)</b>	Raw Material
<b>Almond nuts (Risk Source)</b>	Raw Material		
<b>Cashew nuts (Risk Source)</b>	Raw Material	<b>Hazelnuts (Risk Source)</b>	Raw Material
<b>Macadamia nuts (Risk Source)</b>	Raw Material	<b>Pecan nuts (Risk Source)</b>	Raw Material
<b>Pistachio nuts (Risk Source)</b>	Raw Material	<b>Walnuts (Risk Source)</b>	Raw Material
<b>Peanuts (Risk Source)</b>	Raw Material	<b>Soybeans (Risk Source)</b>	Factory

**Additional Allergen Information**

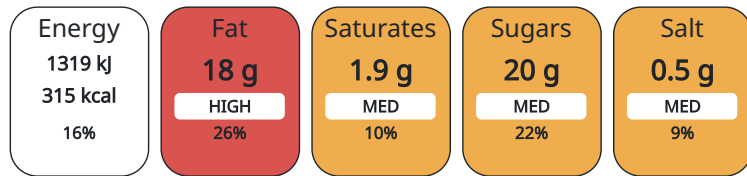
May contain traces of peanuts, nuts, soy and lupin.

DIET SUITABILITY

<b>Vegan Diet</b>	No	<b>Vegetarian Diet</b>	Suitable for
<b>Halal Diet</b>	No	<b>Kosher Diet</b>	No

NUTRITIONAL  
INFORMATION AS  
SOLD

Each 100g/ml portion contains:



of your reference intake.

Typical values per 100g/ml : Energy 315kcal / 1319kJ

Nutrient	per 100g	RI per 100g
<b>Energy (kJ)</b>	1319 kJ	16%
<b>Energy (kcal)</b>	315 kcal	16%
<b>Fat</b>	18 g	26%
of which Saturates	1.9 g	10%
<b>Carbohydrate</b>	35 g	13%
of which Sugars	20 g	22%
<b>Protein</b>	2.8 g	6%
<b>Salt</b>	0.51 g	9%

HANDLING &  
STORAGE  
INFORMATION

**Directions For Use**

Remove from packaging in a frozen condition, defrost in a refrigerator (<= 8 °C). Defrost time approx. 12 hours. Keep product refrigerated and consume promptly: baked products: approx. 3-4 days, cream-based products: approx. 2 days, fruits tortes: approx. 1-2 days.

**Storage Instructions**

Keep frozen. Do not refreeze after thawing.

ORIGIN

<b>Product Country of Origin</b>	Germany
<b>Origin of the Primary Ingredient</b>	Germany

CONTACT  
INFORMATION

**Address**

Yearsley Food Ltd  
Hareshill Road  
OL10 2TP  
Heywood  
Lancs  
England

technical@yearsley.co.uk  
01706 694594

The information on the [Erudus System](#) has been supplied by the manufacturers of the products and, whilst the owners of the Erudus System take steps to ensure the information is regularly updated, they give no warranty and no guarantee that the information is accurate. Product information and ingredients may change, please always read product labels carefully in addition to using the information provided by Erudus.

We do not accept liability for any inaccuracies or incorrect information contained on this site.  
Please visit <http://www.erudus.com/terms-and-conditions> for full terms and conditions.