

Supplier's Product Code :
 Product Added :
 Last Updated by Supplier :
 erudus id :

4477
 18 March 2021
 18 March 2021
 82a1dd6652ac40039301a09ce560f1f8

The information on the [Erudus System](#) has been supplied by the manufacturers of the products and, whilst the owners of the Erudus System take steps to ensure the information is regularly updated, they give no warranty and no guarantee that the information is accurate. Product information and ingredients may change, please always read product labels carefully in addition to using the information provided by Erudus One.

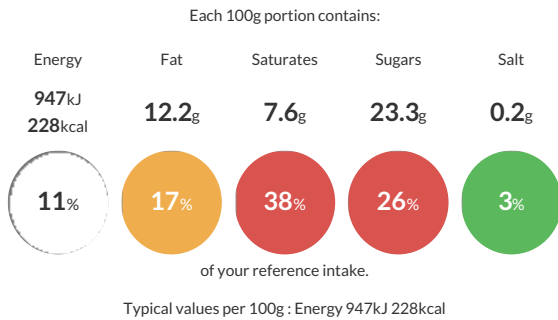
We do not accept liability for any inaccuracies or incorrect information contained on this site. Please visit <http://www.erudus.com/terms-and-conditions> for full terms and conditions.

Dairy Chocolate Ice Cream 4.75 Litres

Chocolate Dairy Ice Cream with Chocolate Shavings and a Chocolate Ripple

Traded Unit GTIN: **5030210003367** Internal GTIN: **5030210003367** Supplier : **New Forest Ice Cream** Suppliers Product Code : **4477**

Reference Intake



Nutritional Information

Typical Values	Per 100g
Energy	947kJ 228kCal
Carbohydrates	24.9g
of which sugars	23.3g
Fat	12.2g
of which saturates	7.6g
Fibre	1.3g
Protein	4.3g
Salt	0.2g

Allergy Information

Key: **Contains** **May Contain**

 May Contain Cereal/Gluten	 Contains Milk	 May Contain Eggs	 Does Not Contain Peanuts	 Does Not Contain Nuts	 Does Not Contain Crustaceans	 Does Not Contain Mustard
 Does Not Contain Fish	 Does Not Contain Lupin	 Does Not Contain Sesame	 Does Not Contain Celery	 Contains Soya	 Does Not Contain Molluscs	 Does Not Contain Sulphur Dioxide

Allergen Statement
 May contain EGG, GLUTEN

Ingredients

Whole MILK, double cream (16%) [from MILK], sugar, chocolate ripple (8%) [contains water, sugar, dried glucose syrup, plain chocolate 10% (cocoa mass, sugar, cocoa butter, SOYA lecithin, flavouring), sweetened condensed MILK, cocoa powder, butter [from MILK], modified waxy maize starch, natural flavouring.], skimmed MILK powder, dark Belgian chocolate shavings (5%) [contain sugar, cocoa mass, cocoa butter, emulsifier SOYA lecithin, natural flavouring.], dextrose, cocoa powder (fat reduced) (1.89%), emulsifier mono and di-glycerides of fatty acids (vegetable origin), stabilisers sodium alginate, guar gum.

Dietary Information

Key: **Suitable for**

 Suitable for Vegetarian	 May not be suitable for Vegan	 May not be suitable for Kosher	 May not be suitable for Halal	 May not be suitable for Coeliac
---	---	--	---	---