

Changed May 02, 2025 08:19

Reviewed May 02, 2025 08:19

Erudus ID 5c461cc84a1a4b1f9a453643a7013dc4

Version 1.0

Status Published

# Kit Kat Chunky Funky Chocolate Bar 24x40g

Limited Edition Multipack Of 4 Delicious Snack-size, Black White Bars 24x40g

## PRODUCT DESCRIPTION

Crispy wafer with a chocolate flavour filling, chewy caramel, & crunchy cereals covered in a sweet white coating.

Brand	Nestle UK
Manufacturer Product Code	12602897
Product Type	Food
Product Category	Confectionery
Storage Type	Ambient
Erudus ID	5c461cc84a1a4b1f9a453643a7013dc4
Specification Type	Generic



Inner Component GTIN	3800020401262
Outer Case GTIN	3800020406021



## INGREDIENTS

### Ingredient Declaration

Sugar, Vegetable Fats (Palm, Shea), WHEAT Flour, Skimmed MILK Powder, Whey Powder Product (MILK), Glucose Syrup, Cocoa Butter, Cocoa Mass, Butterfat (MILK), Fat-Reduced Cocoa Powder, Emulsifier (Lecithins), Raising Agent (Sodium Bicarbonate), Natural Flavouring

### Ingredient Statements

May contain PEANUTS and NUTS

## ALLERGENS

Product Contains:

Celery/Celeriac	No
Cereals Containing Gluten	Yes
Barley	No
Oats	No
Rye	No
Wheat (including Spelt and Khorasan)	Yes
Crustacea	No
Eggs	No
Fish	No
Lupin	No
Milk	Yes
Molluscs	No

Mustard	No
Nuts (Tree)	May Contain
Almond nuts	May Contain
Brazil nuts	May Contain
Cashew nuts	May Contain
Hazelnuts	May Contain
Macadamia (Queensland) nuts	May Contain
Pecan nuts	May Contain
Pistachio nuts	May Contain
Walnuts	May Contain
Peanuts	May Contain
Sesame Seeds	No
Soybeans	No
Sulphur Dioxide and Sulphites	No

DIET  
SUITABILITY

NUTRITIONAL  
INFORMATION AS  
SOLD

HANDLING &  
STORAGE  
INFORMATION

ORIGIN

MARKETING  
INFORMATION

SAFETY &  
WARNINGS

Risk Source:

Tree Nuts (Risk Source)	Line
Brazil nuts (Risk Source)	Line
Hazelnuts (Risk Source)	Line
Pecan nuts (Risk Source)	Line
Walnuts (Risk Source)	Line

Almond nuts (Risk Source)	Line
Cashew nuts (Risk Source)	Line
Macadamia nuts (Risk Source)	Line
Pistachio nuts (Risk Source)	Line
Peanuts (Risk Source)	Line

Allergen Statement On Pack

May contain PEANUTS and TREE NUTS

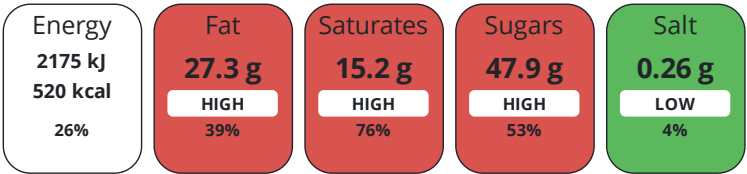
Additional Allergen Information

May contain PEANUTS and NUTS

Vegan Diet	No
Halal Diet	No

Vegetarian Diet	No
Kosher Diet	No

Each 100g/ml portion contains:



of your reference intake.

Typical values per 100g/ml : Energy 520kcal / 2175kJ

Nutrient	per 100g	RI per 100g
Energy (kJ)	2175 kJ	26%
Energy (kcal)	520 kcal	26%
Fat	27.3 g	39%
of which Saturates	15.2 g	76%
Carbohydrate	61.7 g	24%
of which Sugars	47.9 g	53%
Fibre	1.3 g	
Protein	6.1 g	12%
Salt	0.26 g	4%

Serving Size Description	1 bar = 1 serving
--------------------------	-------------------

Directions For Use

Ready to eat

Storage Instructions

Store cool and dry

Product Country of Origin	Bulgaria
---------------------------	----------

Origin of the Primary Ingredient	Bulgaria
----------------------------------	----------

Marketing Description

Crispy wafer with a chocolate flavour filling, chewy caramel, & crunchy cereals covered in a sweet white coating. A sweet snack with a big bite! No artificial colours, flavours or preservatives Rainforest Alliance Certified coco

CONTACT  
INFORMATION

Address

Nestle UK  
Contact Us: Nestle UK Ltd  
Nestle UK Ltd  
PO Box 207  
York  
YO91 1WS

Complaints Contact

[consumer.services@uk.nestle.com](mailto:consumer.services@uk.nestle.com)

P: (Phone) 0800 00 00 30 (UK)

The information on the [Erudus System](#) has been supplied by the manufacturers of the products and, whilst the owners of the Erudus System take steps to ensure the information is regularly updated, they give no warranty and no guarantee that the information is accurate. Product information and ingredients may change, please always read product labels carefully in addition to using the information provided by Erudus.

We do not accept liability for any inaccuracies or incorrect information contained on this site.  
Please visit <http://www.erudus.com/terms-and-conditions> for full terms and conditions.