

Supplier's Product Code :  
 Product Added :  
 Last Updated by Supplier :  
 erudus id :

4478  
 14 April 2021  
 14 April 2021  
 e1b805b51c1342a5b5ef9392919f7d16

The information on the [Erudus System](#) has been supplied by the manufacturers of the products and, whilst the owners of the Erudus System take steps to ensure the information is regularly updated, they give no warranty and no guarantee that the information is accurate. Product information and ingredients may change, please always read product labels carefully in addition to using the information provided by Erudus One.

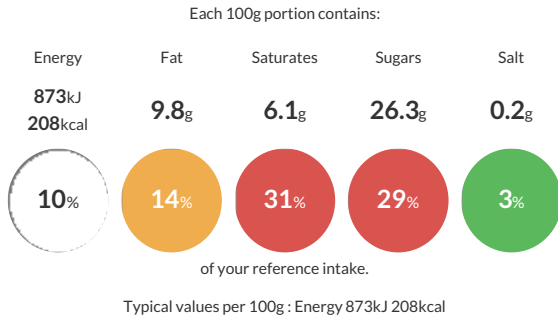
We do not accept liability for any inaccuracies or incorrect information contained on this site. Please visit <http://www.erudus.com/terms-and-conditions> for full terms and conditions.

## Dairy Rum & Raisin Ice Cream 4.75 Litres

Rum & Raisin Flavoured Dairy Ice Cream with Raisins

Traded Unit GTIN: **5030210003497** Internal GTIN: **5030210003497** Supplier : **New Forest Ice Cream** Suppliers Product Code : **4478**

### Reference Intake



### Nutritional Information

Typical Values	Per 100g
Energy	873kJ 208kCal
Carbohydrates	26.5g
of which sugars	26.3g
Fat	9.8g
of which saturates	6.1g
Fibre	0.4g
Protein	3.6g
Salt	0.2g

### Allergy Information

Key: **Contains** **May Contain**



#### Allergen Statement

May contain **EGG, SOYA, GLUTEN**

### Dietary Information

Key: **Suitable for**



### Ingredients

Whole **MILK**, raisin preparation (16%) [contains raisins 46%, water, sugar, modified waxy maize starch, natural flavouring.], double cream (15%) [from **MILK**], sugar, skimmed **MILK** powder, dextrose, emulsifier mono-and diglycerides of fatty acids (vegetable origin), stabilisers (sodium alginate, guar gum), natural flavouring (0.23%) [contains mixture of natural flavouring substances and flavouring preparations, propylene glycol.], caramelised sugar syrup, rum (0.22%).