

Changed Aug 30, 2024 15:59

Reviewed Aug 30, 2024 15:59

Erudus ID 76e2151bb4114034bc877372ba2e24de

Version 3.0

Status Published

Kellogg's Classic Crunchy Granola Bulk Bag 4 x 1.5KG

Kellogg's Crunchy Granola 4x1500g

PRODUCT DESCRIPTION

Start your day with this delicious crunchy granola cereal from Kelloggs. Granola is high in fiber and can improve your digestion and help with your energy levels. Each big bag is 1.5kg and provides around 33 servings.

| | |
|---------------------------|----------------------------------|
| Manufacturer Product Code | 5115986000 |
| Product Type | Food |
| Product Category | Breakfast Cereal |
| Storage Type | Ambient |
| Erudus ID | 76e2151bb4114034bc877372ba2e24de |
| Specification Type | Cereals |



Inner Component GTIN 5053827159852

Outer Case GTIN 5053827159852



INGREDIENTS

Ingredient Declaration

Whole OATS (55%), sugar, sustainable palm oil, WHEAT flour, salt, molasses, dried coconut, BARLEY malt extract.

ALLERGENS

Product Contains:

| | | | |
|--------------------------------------|-----|-------------------------------|-------------|
| Celery/Celериac | No | Mustard | No |
| Cereals Containing Gluten | Yes | Nuts (Tree) | May Contain |
| Barley | Yes | Almond nuts | May Contain |
| Oats | Yes | Brazil nuts | May Contain |
| Rye | No | Cashew nuts | May Contain |
| Wheat (including Spelt and Khorasan) | Yes | Hazelnuts | May Contain |
| Crustacea | No | Macadamia (Queensland) nuts | May Contain |
| Eggs | No | Pecan nuts | May Contain |
| Fish | No | Pistachio nuts | May Contain |
| Lupin | No | Walnuts | May Contain |
| Milk | No | Peanuts | No |
| Molluscs | No | Sesame Seeds | No |
| | | Soybeans | No |
| | | Sulphur Dioxide and Sulphites | No |

Risk Source:

Additional Allergen Information

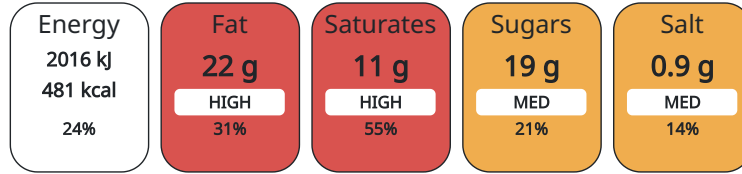
Contains barley, oats, wheat May contain gluten from other cereals, nuts

DIET SUITABILITY

| | | | |
|-------------------|--------------|------------------------|--------------|
| Vegan Diet | Suitable for | Vegetarian Diet | Suitable for |
| Halal Diet | Suitable for | Kosher Diet | Suitable for |

NUTRITIONAL INFORMATION AS SOLD

Each 100g/ml portion contains:



of your reference intake.

Typical values per 100g/ml : Energy 481kcal / 2016kJ

| Nutrient | per 100g | RI per 100g | per 45g serving | RI per 45g serving |
|--------------------|----------|-------------|-----------------|--------------------|
| Energy (kJ) | 2016 kJ | 24% | 907.2 | 11% |
| Energy (kcal) | 481 kcal | 24% | 216.45 | 11% |
| Fat | 22 g | 31% | 9.9 g | 14% |
| of which Saturates | 11 g | 55% | 4.95 g | 25% |
| Carbohydrate | 60 g | 23% | 27 g | 10% |
| of which Sugars | 19 g | 21% | 8.55 g | 10% |
| Fibre | 5.7 g | | 2.57 g | |
| Protein | 8 g | 16% | 3.6 g | 7% |
| Salt | 0.85 g | 14% | 0.38 g | 6% |

Serving Size 45 g

HANDLING & STORAGE INFORMATION

Directions For Use

Eat as directed

Storage Instructions

Store in a cool dry place

ORIGIN

Product Country of Origin Spain

Origin of the Primary Ingredient

CONTACT INFORMATION

Address

Kellanova (Kellogg's)
Kellogg
Orange Tower
M50 2HF
Salford
Greater Manchester
England

stephen.allcock2@kellanova.com
07385931175

Commercial

Stephen Allcock
stephen.allcock2@kellanova.com
07385931175
National Account Executive

The information on the [Erudus System](#) has been supplied by the manufacturers of the products and, whilst the owners of the Erudus System take steps to ensure the information is regularly updated, they give no warranty and no guarantee that the information is accurate. Product information and ingredients may change, please always read product labels carefully in addition to using the information provided by Erudus.

We do not accept liability for any inaccuracies or incorrect information contained on this site.
Please visit <http://www.erudus.com/terms-and-conditions> for full terms and conditions.