

Ultimate Caramel Crispy

Ultimate Caramel Crispy 1x12

PRODUCT DESCRIPTION

Puffed rice coated in chocolate flavour coating with a layer of luxury caramel topped with a layer of milk chocolate

Brand	Lomond Fine Foods Ltd
Manufacturer Product Code	88011
Product Type	Food
Product Category	Traybake
Storage Type	Frozen
Erudus ID	90e7f0e01ad24f4f9ed54e1b881bcb5f
Specification Type	Bakery Products
Inner Pack GTIN	5060268094420
Outer Case GTIN	15060268094427



INGREDIENTS

Ingredient Declaration

Caramel (35%) (Sugar, Glucose Syrup, Sweetened Condensed MILK (MILK, Sugar), Water, Unsalted Butter (MILK), Invert Sugar Syrup, Palm Oil, Salt, Emulsifiers (Rapeseed Lecithin, Sunflower Lecithin, Sorbitan Monostearate), Natural Flavouring), Chocolate Flavour Topping (Sugar, Vegetable Fats (Palm Kernel, Palm Fat), Whey Powder (MILK), WHEAT Flour (WHEAT Flour, Calcium Carbonate, Niacin, Iron, Thiamin), Fat Reduced Cocoa Powder, Emulsifiers (SOYA Lecithin, Polyglycerol Polyricinoleate), Natural flavouring), Rice Crispies (18%) (Ground Rice Flour, Fine Rice Bran, Granulated Sugar), Milk Chocolate (18%) (Sugar, Whole MILK Powder, Cocoa Butter, Cocoa Mass, Emulsifier (SOYA Lecithin), Natural Vanilla Flavouring).

Ingredient Statements

May also contain traces of oats, barley, egg, sulphites and treenuts

ALLERGENS

Product Contains:

Celery/Celериac	No	Mustard	No
Cereals Containing Gluten	Yes	Nuts (Tree)	May Contain
Barley	May Contain	Almond nuts	May Contain
Oats	May Contain	Brazil nuts	No
Rye	No	Cashew nuts	No
Wheat (including Spelt and Khorasan)	Yes	Hazelnuts	May Contain
Crustacea	No	Macadamia (Queensland) nuts	No
Eggs	May Contain	Pecan nuts	No
Fish	No	Pistachio nuts	No
Lupin	No	Walnuts	No
Milk	Yes	Peanuts	No
Molluscs	No	Sesame Seeds	No
		Soybeans	Yes
		Sulphur Dioxide and Sulphites	May Contain

Risk Source:

Allergen Statement On Pack

May contain traces of oats, barley, egg, sulphites and tree nuts

Additional Allergen Information

Allergy Advice: For allergens, including cereals containing gluten, see ingredients in CAPITALS. May also contain traces of oats, barley, egg, sulphites and tree nuts

**SUPPLEMENTARY
INGREDIENT
INFORMATION**

Palm Oil	Yes
Hydrogenated Vegetable Oil/Fat	No
GM Protein/DNA	No

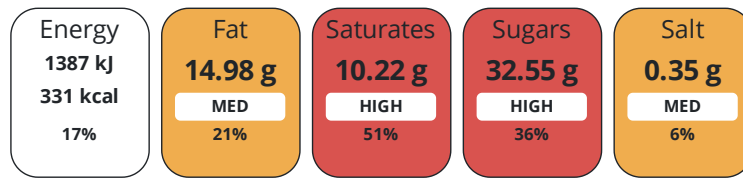
ADDITIVES

Product Contains:

Artificial Antioxidants	No	Artificial Flavourings	No
Artificial Colours	No	Artificial Preservatives	Yes
Artificial Flavour Enhancers	No	Artificial Sweeteners	No
Vegetarian Diet	Suitable for	Halal Diet	No
Kosher Diet	No		

**DIET
SUITABILITY**
**NUTRITIONAL
INFORMATION**

Each 70g/ml serving contains:



of your reference intake.

Typical values per 70g/ml : Energy 331kcal / 1387kj

Nutrient	per 100g	RI per 100g	per 70g serving	RI per 70g serving
Energy (kJ)	1982 kJ	24%	1387.4 kJ	17%
Energy (kcal)	473 kcal	24%	331.1 kcal	17%
Fat	21.4 g	31%	15 g	21%
of which Saturates	14.6 g	73%	10.2 g	51%
Carbohydrate	65.9 g	25%	46.1 g	18%
of which Sugars	46.5 g	52%	32.6 g	36%
Fibre	1 g		0.7 g	
Protein	4 g	8%	2.8 g	6%
Salt	0.5 g	8%	0.4 g	7%

Serving Size	70 g
Number of Servings	12 Servings

Source of Nutritional Information Calculation from known/accepted datasets

**SUPPLEMENTARY
NUTRITIONAL
INFORMATION**
**HFSS (HIGH IN
FAT, SALT AND
SUGAR)**

HFSS Status	Yes
--------------------	-----

HANDLING & STORAGE INFORMATION

Directions For Use

Defrost for 6 - 8 hours before serving. Ambient: Store in a cool, dry place. Once opened store in an airtight container and consume within 14 days

Storage Instructions

Storage: Store at -18°C or colder. Defrost for 6 - 8 hours before serving. Ambient: Store in a cool, dry place.

Storage Instructions After Opening

Ambient: Store in a cool, dry place.

Shelf Life from Time of Production	540 Days	Exempt From Shelf Life Labelling	No
Shelf Life From Opening	5 Days		
Shelf Life Once Defrosted	5 Days		

ACCREDITATIONS/ CERTIFICATIONS/ ASSURANCE SCHEMES



ORIGIN

Product Country of Origin/Place of United Kingdom

Provenance

Additional Origin Details

Produced in Scotland

PRODUCT CHARACTERISTICS

Standards Testing

Do you undertake trend analysis of microbiological results?	Yes	Is shelf life testing undertaken?	No
--	-----	--	----

Microbiological Standards

Organism	Description	Frequency	Target	Maximum	Sample (g or ml)
Enterobacteriaceae (cfu/g or ml)		Occasionally	<10	100	100
Listeria SPP (cfu/g or ml)		Occasionally	<0	100	100
Staphylococcus Aureus (cfu/g or ml)	reject if present	Occasionally	<0	0	100
Salmonella (cfu/g or ml)	reject if present	Occasionally	<0	0	100
Yeast (cfu/g or ml)		Occasionally	<1000	10000	100
Moulds (cfu/g or ml)		Occasionally	<1000	10000	100
Aerobic Colony Count (ACC) (cfu/g or ml)		Occasionally	<1000	10000	100
Enterobacter Sakazakii (cfu/g or ml)		Occasionally	<0	10	100

CONFIGURATION

Case Configuration

Variable Inner Components in Outer Case	Yes
Total Quantity of Inner Components in Outer Case	10 Units
Total Quantity of Inner Packs in Outer Case	10 Units
Is the Outer Case Splittable?	No

Inner Pack Configuration

Is Inner Pack Splittable?	No
Quantity of Inner Components in Inner Pack	1
Count per Inner Component	12

PRODUCT WEIGHTS

Inner Component

Variable Weight Consumer Item	Yes
Inner Component Weight	0.07 kg
Net Drained Weight	0 g
e mark	No

Outer Case

Outer Case Gross Weight	9.73 kg
Outer Case Net Weight	8.5 kg

Inner Pack

Inner Pack Gross Weight	0.88 kg
Inner Pack Net Weight	0.85 kg

PRODUCT DIMENSIONS

Inner Component

Inner Component Depth	22 mm
Inner Component Width	40 mm
Inner Component Height	100 mm
Inner Component Diameter	0 mm

Inner Pack

Inner Pack Depth	31.5 mm
Inner Pack Width	202 mm
Inner Pack Height	322 mm

Outer Case

Outer Case Depth	407 mm
Outer Case Width	334 mm
Outer Case Height	225 mm

PALLET INFORMATION

Quantity of Cases Per Pallet Layer	8 Cases
Quantity of Layers Per Pallet	5 Layers
Quantity of Cases Per Pallet	40 Cases

Pallet Height	1.7 MTR
Pallet Gross Weight	413 kg

PACKAGING

Inner Component Packaging

Type	Materials	Weight	Recycled Plastic %	Recyclable	Returnable	Composite
Foil	Plastic	5 g	- %			
Foil	Aluminium	30 g	- %			

Outer Case Packaging

Type	Materials	Weight	Recycled Plastic %	Recyclable	Returnable	Composite
Case	Paper/Cardboard	321.5 g	- %			

OTHER INFORMATION

Commodity Code	1905203000
-----------------------	------------

Manufacturer Comments

1x12 ptn

CONTACT INFORMATION

Address

Lomond Fine Foods Ltd
75 Keppochhill Drive
Springburn
Glasgow
G21 1HX
Scotland

P: (Phone) 0141 353 6777

The information on the [Erudus System](#) has been supplied by the manufacturers of the products and, whilst the owners of the Erudus System take steps to ensure the information is regularly updated, they give no warranty and no guarantee that the information is accurate. Product information and ingredients may change, please always read product labels carefully in addition to using the information provided by Erudus.

We do not accept liability for any inaccuracies or incorrect information contained on this site.
Please visit <http://www.erudus.com/terms-and-conditions> for full terms and conditions.