

Changed Oct 13, 2025 10:01

Reviewed Oct 13, 2025 10:01

Erudus ID c9f42dbd145a483fb0ceaab75817383a

Version 1.0

Status Published

Cream Cheese Jalapeños (6 x 1kg)

Cream Cheese Jalapeños (6 X 1kg) 1x0.034kg

PRODUCT DESCRIPTION

Green Jalapeño peppers filled with cream cheese preparation, breaded, pre-fried, quick-frozen. (6 x 1kg)

Manufacturer Product Code	LD156606
Product Type	Food
Product Category	Party Food
Storage Type	Frozen
Erudus ID	c9f42dbd145a483fb0ceaab75817383a
Specification Type	Generic

Inner Pack GTIN	8716276000379
Outer Case GTIN	8716276005503



INGREDIENTS

Ingredient Declaration

Cream Cheese Preparation (27%) (Cream Cheese, (Cream (MILK), Stabiliser (Carrageenan)), Modified Starch (Acetylated Distarch Phosphate), Rapeseed Oil, Potato Starch, Thickener (Sodium Carboxymethylcellulose)), Breadcrumbs (26%) (WHEAT Flour, Yeast, Salt, Caramelised Sugar, Colours (Turmeric Extract, Paprika Extract)), Jalapeño Peppers (25%) (Green Jalapeño Pepper, Water, Salt, Acidity Regulator (Acetic Acid), Stabiliser (Calcium Chloride)), Sunflower Oil, Water, WHEAT Flour, Paprika Powder, Stabiliser (Diphosphates), Raising Agent (Sodium Hydrogen Carbonate).

ALLERGENS

Product Contains:

Celery/Celeriac	No
Cereals Containing Gluten	Yes
Barley	No
Oats	No
Rye	No
Wheat (including Spelt and Khorasan)	Yes
Crustacea	No
Eggs	No
Fish	No
Lupin	No
Milk	Yes
Molluscs	No

Mustard	No
Nuts (Tree)	No
Almond nuts	No
Brazil nuts	No
Cashew nuts	No
Hazelnuts	No
Macadamia (Queensland) nuts	No
Pecan nuts	No
Pistachio nuts	No
Walnuts	No
Peanuts	No
Sesame Seeds	No
Soybeans	No
Sulphur Dioxide and Sulphites	No

Allergen Statement On Pack

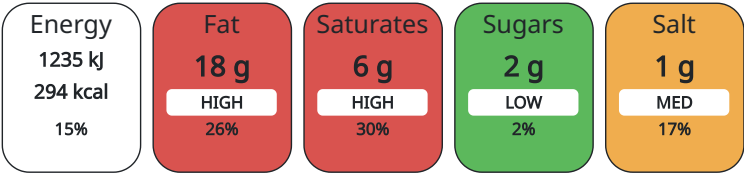
For allergens, including cereals containing gluten, see ingredients in CAPITALS.

DIET SUITABILITY

Vegan Diet	No	Vegetarian Diet	Suitable for
Halal Diet	Suitable for	Kosher Diet	No

NUTRITIONAL
INFORMATION AS
SOLD

Each 100g/ml portion contains:



of your reference intake.

Typical values per 100g/ml : Energy 294kcal / 1235kJ

Nutrient	per 100g	RI per 100g
Energy (kJ)	1235 kJ	15%
Energy (kcal)	294 kcal	15%
Fat	18 g	26%
of which Saturates	6 g	30%
Carbohydrate	27 g	10%
of which Sugars	2 g	2%
Fibre	1 g	
Protein	4.9 g	10%
Salt	1 g	17%
Sodium	401 mg	

Serving Size	0 g
--------------	-----

HANDLING &
STORAGE
INFORMATION

Directions For Use	From Frozen unless otherwise stated Oven: Preheated at 225°C: 10-12 mins, turn halfway. Deep Fry: Deep fry in cooking oil at 175°C: 3-4 mins. Do not refreeze after defrosting.
Storage Instructions	Keep Frozen. Store at -18°C or below

ORIGIN

Product Country of Origin	Netherlands (the)
Origin of the Primary Ingredient	Not Applicable

MARKETING
INFORMATION

Marketing Description	Green Jalapeño peppers filled with cream cheese preparation, breaded, pre-fried, quick-frozen.
-----------------------	------------------------------------------------------------------------------------------------

CONTACT
INFORMATION

Address

Central Foods Group Limited
Maple Court
Ash Lane
NN4 0NB
Collingtree
Northamptonshire
England

technical@centralfoods.co.uk
01604 858 522

Technical

Chris Stobart
technical@centralfoods.co.uk
01604 878 276
Technical Manager

Commercial

Oliver Sampson
osampson@centralfoods.co.uk
07715 073 273
Managing Director

Complaints

Karen Wright
kwright@centralfoods.co.uk
01604 878 299
Customer Care Admin Assistant

The information on the [Erudus System](#) has been supplied by the manufacturers of the products and, whilst the owners of the Erudus System take steps to ensure the information is regularly updated, they give no warranty and no guarantee that the information is accurate. Product information and ingredients may change, please always read product labels carefully in addition to using the information provided by Erudus.

We do not accept liability for any inaccuracies or incorrect information contained on this site.
Please visit <http://www.erudus.com/terms-and-conditions> for full terms and conditions.