

# Brussels Pate loaf 1kg

Brussels Pate Loaf 1kg 3x1kg

## PRODUCT DESCRIPTION

Brussels Pate 1kg

Brand	Midland Chilled Foods (Granarolo UK)
Manufacturer Product Code	E111
Product Type	Food
Product Category	Pate & Parfait
Storage Type	Chilled
Erudus ID	c62f45bb97654535908ef807858ebabd
Specification Type	Meat



## INGREDIENTS

**Ingredient Declaration**  
33% pork liver, chicken fat, 19% chicken meat, water, salt, rice flour, antioxidant (E301, E326), emulsifier (E472c), onions, **MILK protein, spices, flavourings, dextrose, tomatoes, stabilisers (E450, E452), yeast extract, preservative (E250, E261), pork gelatine.**

**Ingredient Statements**  
**Allergy advice: Contains MILK - May also contain traces of NUTS (WALNUTS, HAZELNUTS)**

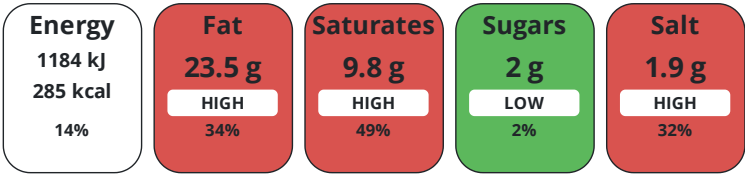
## ALLERGENS

<b>Product Contains:</b>			
Celery/Celeriac	No	Mustard	No
Cereals Containing Gluten	No	Nuts (Tree)	May Contain
Barley	No	Almond nuts	No
Oats	No	Brazil nuts	No
Rye	No	Cashew nuts	No
Wheat (including Spelt and Khorasan)	No	Hazelnuts	May Contain
Crustacea	No	Macadamia (Queensland) nuts	No
Eggs	No	Pecan nuts	No
Fish	No	Pistachio nuts	No
Lupin	No	Walnuts	May Contain
Milk	Yes	Peanuts	No
Molluscs	No	Sesame Seeds	No
<b>Risk Source:</b>			
Halal Diet	No	Kosher Diet	No

## DIET SUITABILITY

NUTRITIONAL  
INFORMATION

Each 100g/ml portion contains:



of your reference intake.

Typical values per 100g/ml : Energy 285kcal / 1184kJ

Nutrient	per 100g	RI per 100g
Energy (kJ)	1184 kJ	14%
Energy (kcal)	285 kcal	14%
Fat	23.5 g	34%
of which Saturates	9.8 g	49%
Carbohydrate	5.9 g	2%
of which Sugars	2 g	2%
Protein	12.6 g	25%
Salt	1.9 g	32%

HANDLING &  
STORAGE  
INFORMATION

Directions For Use

Ready to eat product

Storage Instructions

Store below +5°C

Storage Instructions After Opening

Store below +5°C

ORIGIN

Product Country of Origin Belgium

Origin of the Primary Ingredient

CONTACT  
INFORMATION

Address

Midland Chilled Foods (Granarolo UK)  
Strings Lane  
Willenhall  
Wolverhampton  
WY13 1LX  
England

Technical Contact

Patrizia Mattara  
QA Manager  
technical@midlandchilled.co.uk

P: (Phone) 01902 366004

P: (Phone) 01902 366004

The information on the [Erudus System](#) has been supplied by the manufacturers of the products and, whilst the owners of the Erudus System take steps to ensure the information is regularly updated, they give no warranty and no guarantee that the information is accurate. Product information and ingredients may change, please always read product labels carefully in addition to using the information provided by Erudus.

We do not accept liability for any inaccuracies or incorrect information contained on this site.  
Please visit <http://www.erudus.com/terms-and-conditions> for full terms and conditions.