

Yorkie Raisin & Biscuit Chocolate Bar 24x44g

Yorkie Raisin & Biscuit Chocolate Bar 36x

PRODUCT DESCRIPTION

Chunky milk chocolate with raisins (13%) and biscuits (4%)

| | |
|---------------------------|----------------------------------|
| Brand | Nestle UK |
| Manufacturer Product Code | 12360869 |
| Product Type | Food |
| Product Category | Confectionery |
| Storage Type | Ambient |
| Erudus ID | 6c8f98d94b2348c4af96e6b7b282af38 |
| Specification Type | Legacy |



| | |
|----------------------|----------------|
| Inner Component GTIN | 07613034872593 |
| Outer Case GTIN | 07613036397810 |



INGREDIENTS

Ingredient Declaration
Milk chocolate (Sugar, Dried whole **MILK**, Cocoa butter, Cocoa mass, Vegetable fats (Palm/ Mango kernel/ Sal/ Shea), Lactose and proteins from whey (from **MILK**),
Whey powder (from **MILK**), Skimmed **MILK** powder, Butterfat (from **MILK**), Emulsifier (Sunflower lecithin)), Raisins, Biscuit (**WHEAT** flour (contains Calcium, Iron, Thiamin and Niacin), Sugar, Vegetable fats (Palm, Rapeseed), Partially inverted refiners' syrup, Modified starch, Raising agents (Ammonium bicarbonate, Sodium bicarbonate), Salt).

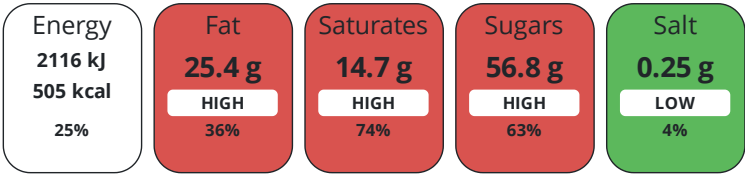
ALLERGENS

| | |
|--------------------------------------|--------------|
| Product Contains: | |
| Celery/Celeriac | No |
| Cereals Containing Gluten | Yes |
| Barley | No |
| Oats | No |
| Rye | No |
| Wheat (including Spelt and Khorasan) | Yes |
| Gluten content <20ppm | No |
| Crustacea | No |
| Eggs | No |
| Fish | No |
| Lupin | No |
| Milk | Yes |
| Molluscs | No |
| Mustard | No |
| Nuts (Tree) | No |
| Almond nuts | No |
| Brazil nuts | No |
| Cashew nuts | No |
| Hazelnuts | No |
| Macadamia (Queensland) nuts | No |
| Pecan nuts | No |
| Pistachio nuts | No |
| Walnuts | No |
| Peanuts | No |
| Sesame Seeds | No |
| Soybeans | No |
| Sulphur Dioxide and Sulphites | No |
| Halal Diet | No |
| Vegetarian Diet | Suitable for |
| Suitable for Coeliacs | No |
| Kosher Diet | No |
| Vegan Diet | No |

DIET
SUITABILITY

NUTRITIONAL
INFORMATION

Each 100g/ml portion contains:



of your reference intake.

Typical values per 100g/ml : Energy 505kcal / 2116kJ

| Nutrient | per 100g/ml | RI per 100g/ml |
|--------------------|-------------|----------------|
| Energy (kJ) | 2116 kJ | 25% |
| Energy (kcal) | 505 kcal | 25% |
| Fat | 25.4 g | 36% |
| of which Saturates | 14.7 g | 74% |
| Carbohydrate | 60.2 g | 23% |
| of which Sugars | 56.8 g | 63% |
| Fibre | 2 g | |
| Protein | 6.2 g | 12% |
| Salt | 0.25 g | 4% |

HANDLING &
STORAGE
INFORMATION

Directions For Use

Ready to Eat

Storage Instructions

Store cool and dry

ORIGIN
CONTACT
INFORMATION

Product Country of Origin United Kingdom

Address

Nestle UK
Nestlé UK Ltd
PO Box 207
York
YO91 1WS
England

P: (Phone) 0800 00 00 30 (UK)

Complaints Contact

consumer.services@uk.nestle.com

P: (Phone) 0800 00 00 30 (UK)

The information on the [Erudus System](#) has been supplied by the manufacturers of the products and, whilst the owners of the Erudus System take steps to ensure the information is regularly updated, they give no warranty and no guarantee that the information is accurate. Product information and ingredients may change, please always read product labels carefully in addition to using the information provided by Erudus.

We do not accept liability for any inaccuracies or incorrect information contained on this site.
Please visit <http://www.erudus.com/terms-and-conditions> for full terms and conditions.