

001089

Marie Rose 2 x 2.2L

Marie Rose 2x2.2l 2x1x2.32kg

PRODUCT DESCRIPTION

Flavour: Tomato flavour with sour note Colour: Salmon pink colour Texture: Thick Odour: Tomato and sour note

Brand	Rich Sauces
Manufacturer Product Code	RSMARROS2.2X2
Effective Date	Jan 22, 2024
Product Type	Food
Product Category	Condiments
Storage Type	Ambient
Erudus ID	23c1452b652749daa9d3b209564958e9
Specification Type	Generic

Inner Component GTIN	5060051290121
Inner Pack GTIN	5060051290121
Outer Case GTIN	15060051290128



INGREDIENTS

Ingredient Declaration

Rapeseed Oil, Water, Sugar, Spirit Vinegar, Tomatoes (7%), Pasteurised Liquid **EGG** Yolk, Modified Starch, Salt, Spices, Stabiliser: Xanthan Gum, Preservative: Potassium Sorbate, Onion Powder, Garlic Powder, White Pepper, Black Pepper.

ALLERGENS

Product Contains:

Celery/Celeriac	No
Cereals Containing Gluten	No
Barley	No
Oats	No
Rye	No
Wheat (including Spelt and Khorasan)	No
Crustacea	No
Eggs	Yes
Fish	No
Lupin	No
Milk	No
Molluscs	No

Mustard	No
Nuts (Tree)	No
Almond nuts	No
Brazil nuts	No
Cashew nuts	No
Hazelnuts	No
Macadamia (Queensland) nuts	No
Pecan nuts	No
Pistachio nuts	No
Walnuts	No
Peanuts	No
Sesame Seeds	No
Soybeans	No
Sulphur Dioxide and Sulphites	No

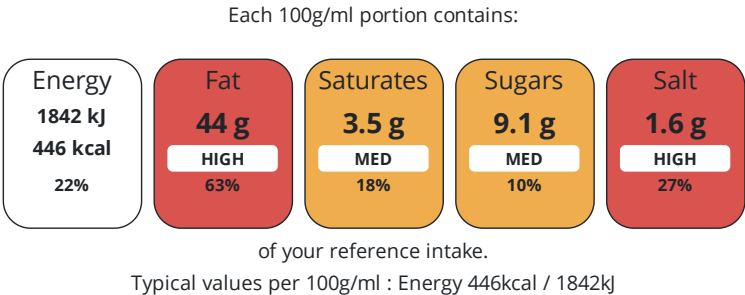
Additional Allergen Information

Egg

DIET
SUITABILITY

Vegan Diet	No	Vegetarian Diet	Suitable for
Halal Diet	No	Kosher Diet	No

NUTRITIONAL
INFORMATION AS
SOLD



Nutrient	per 100g	RI per 100g	per 30g serving	RI per 30g serving
Energy (kJ)	1842 kJ	22%	552.6	7%
Energy (kcal)	446 kcal	22%	133.8	7%
Fat	44 g	63%	13.2 g	19%
of which Saturates	3.5 g	18%	1.05 g	5%
Carbohydrate	12 g	5%	3.6 g	1%
of which Sugars	9.1 g	10%	2.73 g	3%
Fibre	0.4 g		0.12 g	
Protein	0.9 g	2%	0.27 g	1%
Salt	1.6 g	27%	0.48 g	8%

Serving Size30 g

Source of Nutritional InformationCalculation based on known values of ingredients

HANDLING &
STORAGE
INFORMATION

Directions For Use

Ready to eat

Storage Instructions

Unopened: 10 months from date of manufacture Ambient product, refrigerate once opened, use within 6 weeks and within best before date.

ORIGIN

Product Country of OriginUnited Kingdom

Additional Origin Details

UK

Origin of the Primary Ingredient

SAFETY &
WARNINGS

CONTACT
INFORMATION

Address

Rich Sauces
34 Jubilee Road
Newtownards
Down
BT23 6YH
England

P: (Phone) 02891819004

Complaints Contact

Lynsey Mawhinney
QA Team Lead
lynsey.mawhinney@richsauces.com

P: (Phone) +44 2891 819004

Technical Contact

Lynsey Mawhinney
QA Team Lead
lynsey.mawhinney@richsauces.com

P: (Phone) +44 2891 819004

Commercial Contact

Pam Gourley
Sales Manager
pam@richsauces.com

P: (Phone) +44 2891 819004

The information on the [Erudus System](#) has been supplied by the manufacturers of the products and, whilst the owners of the Erudus System take steps to ensure the information is regularly updated, they give no warranty and no guarantee that the information is accurate. Product information and ingredients may change, please always read product labels carefully in addition to using the information provided by Erudus.

We do not accept liability for any inaccuracies or incorrect information contained on this site.
Please visit <http://www.erudus.com/terms-and-conditions> for full terms and conditions.