

# San Pellegrino Lemon 12x330ml (New Can)

San Pellegrino Lemon 12x330ml (New Can)

## PRODUCT DESCRIPTION

The finest sun-ripened lemons of Southern Italy give SANPELLEGRINO Limonata (Lemon) its authentic citrus sparkle. It's a perfect balance of pleasingly tart and sweet notes, characterized by the intense, fragrant aroma of lemon juice. An Italian tradition since 1932, SANPELLEGRINO Italian Sparkling Drinks have delighted the world with their authentic Italian taste. Allow your senses to take in the sun-ripened fruit. Its unique and intense taste make every moment special and allow you to enjoy life *deliziosa* any time you choose.

Brand	Nestle Waters UK
Manufacturer Product Code	12503758
Product Type	Drink
Product Category	Juices and Cordials
Storage Type	Ambient
Erudus ID	07b6be8db8034b96851aedc51ad886ce
Specification Type	Legacy



Inner Component GTIN	8002270576829
Outer Case GTIN	8002270576812



## INGREDIENTS

**Ingredient Declaration**

Water, Lemon Juice from Concentrate (16%), Sugar, Carbon Dioxide, Natural Lemon Flavouring, Natural Flavourings, Stabiliser (Pectins), Sweetener (Steviol Glycosides from Stevia), Sweetener from natural origin.

## ALLERGENS

Product Contains:			
Celery/Celeriac	No	Mustard	No
Cereals Containing Gluten	No	Nuts (Tree)	No
Barley	No	Almond nuts	No
Oats	No	Brazil nuts	No
Rye	No	Cashew nuts	No
Wheat (including Spelt and Khorasan)	No	Hazelnuts	No
Crustacea	No	Macadamia (Queensland) nuts	No
Eggs	No	Pecan nuts	No
Fish	No	Pistachio nuts	No
Lupin	No	Walnuts	No
Milk	No	Peanuts	No
Molluscs	No	Sesame Seeds	No
		Soybeans	No
		Sulphur Dioxide and Sulphites	No

DIET  
SUITABILITY

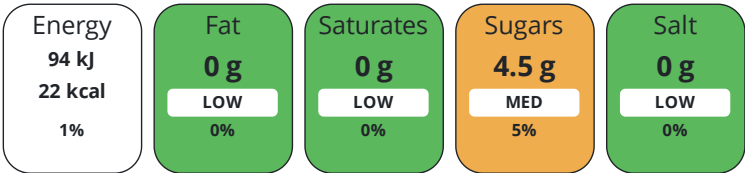
Additional Allergen Information

No Allergens

Suitable for Coeliacs	Yes	Halal Diet	No
Kosher Diet	No	Vegetarian Diet	Suitable for
Vegan Diet	Suitable for		

NUTRITIONAL  
INFORMATION

Each 100g/ml portion contains:



of your reference intake.

Typical values per 100g/ml : Energy 22kcal / 94kJ

Nutrient	per 100g/ml	RI per 100g/ml	per 330g/ml serving	RI per 330g/ml serving
Energy (kJ)	94 kJ	1%	310.2	4%
Energy (kcal)	22 kcal	1%	72.6	4%
Fat	0 g		0 g	
of which Saturates	0 g		0 g	
Carbohydrate	4.5 g	2%	14.85 g	6%
of which Sugars	4.5 g	5%	14.85 g	17%
Fibre	0.1 g		0.33 g	
Protein	0 g		0 g	
Salt	0 g		0 g	

Serving Size	330 g
--------------	-------

HANDLING &  
STORAGE  
INFORMATION

Directions For Use

Best served chilled.

Storage Instructions

Best before: see base of can. Store in a clean, cool, dry and odourless place, away from direct sunlight and freezing temperatures.

ORIGIN  
CONTACT  
INFORMATION

Product Country of Origin	Italy
Address	Nestle Waters UK Nestlé UK Ltd (Waters) Haxby Road York North Yorkshire YO31 8TA England
P: (Phone)	07824 561354

The information on the [Erudus System](#) has been supplied by the manufacturers of the products and, whilst the owners of the Erudus System take steps to ensure the information is regularly updated, they give no warranty and no guarantee that the information is accurate. Product information and ingredients may change, please always read product labels carefully in addition to using the information provided by Erudus.

