

Supplier's Product Code :  
Product Added :  
Last Updated by Supplier :  
erudus id :

3172  
16 April 2021  
16 April 2021  
0a0104c912a64e04ab6c9432f9ba6d26

The information on the [Erudus System](#) has been supplied by the manufacturers of the products and, whilst the owners of the Erudus System take steps to ensure the information is regularly updated, they give no warranty and no guarantee that the information is accurate. Product information and ingredients may change, please always read product labels carefully in addition to using the information provided by Erudus One.

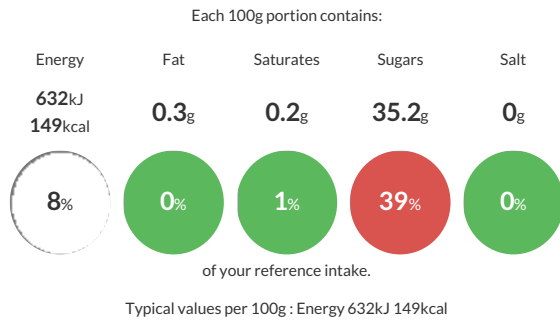
We do not accept liability for any inaccuracies or incorrect information contained on this site. Please visit <http://www.erudus.com/terms-and-conditions> for full terms and conditions.

## Blood Orange Sorbet 2 Litre

Blood Orange Juice from concentrate Water Ice with an Orange Ripple

Traded Unit GTIN: **5030210003275** Internal GTIN: **5030210003275** Supplier : **New Forest Ice Cream** Suppliers Product Code : **3172**

### Reference Intake



### Nutritional Information

| Typical Values     | Per 100g         |
|--------------------|------------------|
| Energy             | 632kJ<br>149kCal |
| Carbohydrates      | 36g              |
| of which sugars    | 35.2g            |
| Fat                | 0.3g             |
| of which saturates | 0.2g             |
| Fibre              | 0.3g             |
| Protein            | 0.5g             |
| Salt               | 0g               |

### Allergy Information

Key: **Contains** **May Contain**



#### Allergen Statement

May contain MILK, SOYA, GLUTEN

### Dietary Information

Key: **Suitable for**



### Ingredients

Water, sugar, blood orange juice concentrate (13%), orange ripple (8%) [contains water, sugar, orange juice concentrate 6%, modified waxy maize starch, citric acid, natural flavouring, natural colourings (carotene, carantho)], glucose powder, emulsifier (mono- and diglycerides of fatty acids (vegetable origin)), stabilisers (locust bean gum, methyl cellulose, carrageenan, pectin).