

710037

44773 Toffee & Honeycomb Cheesecake (Pre-cut 14 Portion)

Toffee & Honeycomb Cheesecake

PRODUCT DESCRIPTION

A layer of sweet biscuit with honeycomb caramel pieces and toffee sauce, white chocolate cheesecake, fresh vanilla cream. Decorated with white chocolate shavings, chocolate coated honeycomb, caramel fudge pieces, toffee sauce and dusted with cocoa powder.

Brand	Eatons Patisserie
Manufacturer Product Code	44773 14153
Product Type	Food
Product Category	Desserts
Storage Type	Frozen
Erudus ID	d9719d715b124b279d7f4c24c381f130
Specification Type	Bakery Products
Outer Case GTIN	5060109335644



INGREDIENTS

Ingredient Declaration

Cream (**MILK**), **WHEAT** Flour (With Calcium, Iron, Niacin, Thiamin), Wholemeal **WHEAT** Flour, Vegetable Shortening (Palm & Rapeseed Oil), Sugar, Partially Invert Sugar Syrup, Raising Agents (Sodium Bicarbonate, Ammonium Carbonate), Salt, Light Soft Cheese (11%) [Skimmed **MILK**, Cream (**MILK**), Skimmed **MILK** Powder, Lactic Cultures, Salt, **MILK** Protein, Preservative (Potassium Sorbate E202)], Caramel Sauce (4%) [Sweetened Condensed **MILK** (MILK, Sugar), Golden Syrup (Partially Inverted Refiners Syrup), Glucose Syrup, Palm Kernel, Water, Unsalted Butter (**MILK**), Sugar, Palm Oil, Gelling Agent (Pectin E440), Emulsifiers (Sunflower, Rapeseed Lecithin E322, Sorbitan Tri-Stearate E492), Salt, Preservative (Potassium Sorbate E202)], Vegetable Oil (Palm & Rapeseed Oil), Water, Salt, Emulsifier (Mono- And Diglycerides Of Fatty Acids E471), Flavouring, Colouring (Annatto Bixin E160b(i), Curcumin E100), White Chocolate [Sugar, Cocoa Butter, Whole **MILK** Powder, Emulsifier (**SOYA** Lecithin), Natural Vanilla Flavouring], Sugar, White Chocolate Shavings [Sugar, Whole **MILK** Powder, Cocoa Butter, Emulsifier (**SOYA** Lecithin), Natural Vanilla Flavouring, Honeycomb Chunks (2%) (Sugar, Glucose Syrup, Raising Agent E500ii, Rice Flour) Chocolate (Sugar, Palm Oil, Whey Powder (**MILK**), Cocoa Powder, Emulsifier E322 **SOYA** Lecithin, Stabiliser: Sorbitan Tristearate) [**SULPHITES**], Mini Caramel Fudge Cubes (2%) [Sugar, Full Cream Condensed **MILK**, Fondant (Sugar, Glucose (**SULPHITES**), Water), Glucose Syrup, Palm Oil, Water, Salt], Icing Sugar [Anti Caking Agent (Tricalcium Phosphate E341iii)], Soft Light Brown Sugar (Sugar And Cane Molasses), Invert Sugar Syrup, **MILK** Chocolate (Sugar, Cocoa Butter, Cocoa Mass, Skimmed **MILK** Powder, **MILK** Sugar, Whey Powder (**MILK**), Anhydrous **MILK** Fat, Emulsifier E322 (**SOYA**)), Honeycomb Granules (1%) (Sugar, Glucose Syrup, Water, Raising Agent E500ii), Glazing Agent (Stabiliser E414, Sucrose, Honey), Gelatine, Fat Reduced Cocoa Powder (Cocoa Solids 90%), Acidity Regulator: Potassium Carbonate, Vanilla Flavourings, Colour Ammonia Caramel E150c, Glucose Syrup, Invert Sugar Syrup, Fructose Syrup, Natural Vanilla, Natural Bourbon Vanilla Flavouring, Vegetable Concentrates (Pumpkin And Carrot), Acidity Regulator (Citric Acid E330), Stabiliser (Carrageenan E407).

ALLERGENS

Product Contains:

Celery/Celeriac	No
Cereals Containing Gluten	Yes
Barley	May Contain
Oats	May Contain
Rye	No
Wheat (including Spelt and Khorasan)	Yes
Crustacea	No
Eggs	May Contain
Fish	No
Lupin	No
Milk	Yes
Molluscs	No

Mustard	No
Nuts (Tree)	May Contain
Almond nuts	May Contain
Brazil nuts	No
Cashew nuts	No
Hazelnuts	May Contain
Macadamia (Queensland) nuts	No
Pecan nuts	May Contain
Pistachio nuts	May Contain
Walnuts	May Contain
Peanuts	No
Sesame Seeds	No
Soybeans	Yes
Sulphur Dioxide and Sulphites	Yes

Risk Source:

Additional Allergen Information

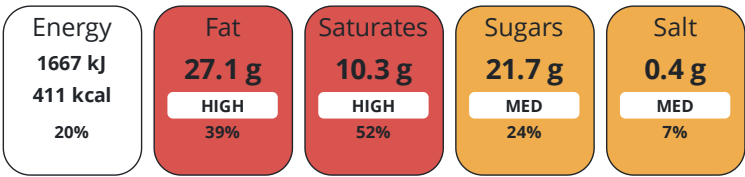
For allergens please refer to ingredients in CAPITAL LETTERS. Caution: Produced in a factory which is not a nut free environment. May contain Nuts, Egg, Barley, and Oats.

DIET
SUITABILITY

Vegan Diet	No	Vegetarian Diet	No
Halal Diet	No	Kosher Diet	No

NUTRITIONAL
INFORMATION

Each 100g/ml portion contains:



of your reference intake.

Typical values per 100g/ml : Energy 411kcal / 1667kJ

Nutrient	per 100g	RI per 100g	per 128g serving	RI per 128g serving
Energy (kJ)	1667 kJ	20%	2133.8 kJ	25%
Energy (kcal)	411 kcal	21%	526.1 kcal	26%
Fat	27.1 g	39%	34.7 g	50%
of which Saturates	10.3 g	52%	13.2 g	66%
Carbohydrate	33.8 g	13%	43.3 g	17%
of which Sugars	21.7 g	24%	27.8 g	31%
Fibre	0.9 g		1.2 g	
Protein	5.9 g	12%	7.6 g	15%
Salt	0.4 g	7%	0.5 g	8%
Serving Size	128 g			
Number of Servings	14 Servings			

HANDLING &
STORAGE
INFORMATION

Directions For Use

To defrost: Remove all packaging and refrigerate for 12 hours. Shelf life after defrosting 2 - 4 days.

Storage Instructions

Store below -18°C. Once defrosted store at 5°C ± 2°C.

ORIGIN

Product Country of Origin United Kingdom

Additional Origin Details

Not Applicable

Origin of the Primary Ingredient

CONTACT
INFORMATION

Address

Eatons Patisserie
17 Combe Road
Torquay
Devon
TQ2 8EJ
England

Technical Contact

Christopher Rushworth
Technical Manager
gatech@eatonspatisserie.co.uk

P: (Phone) 01626 361212 - Opt 3

P: (Phone) 01626 361212

Complaints Contact

Christopher Rushworth
QA Technical Manager
gatech@eatonspatisserie.co.uk

Commercial Contact

Russell Eaton
Managing Director
russell.eaton@eatonspatisserie.co.uk

P: (Phone) 01626 361212 - Opt 3

P: (Phone) 0782 5535543

The information on the [Erudus System](#) has been supplied by the manufacturers of the products and, whilst the owners of the Erudus System take steps to ensure the information is regularly updated, they give no warranty and no guarantee that the information is accurate. Product information and ingredients may change, please always read product labels carefully in addition to using the information provided by Erudus.

We do not accept liability for any inaccuracies or incorrect information contained on this site.
Please visit <http://www.erudus.com/terms-and-conditions> for full terms and conditions.