

Luxury Belgian Chocolate Brownie Tray Bake

Belgian Chocolate Brownie Tray Bake

PRODUCT DESCRIPTION

A luxurious rich chocolate brownie packed with dark Belgian chocolate chunks

| | |
|---------------------------|--|
| Brand | Love Handmade Cakes (Exquisite Handmade Cakes) |
| Manufacturer Product Code | TBLCHB |
| Product Type | Food |
| Product Category | Bakery - General |
| Storage Type | Ambient |
| Erudus ID | 75b34a3d45a1445faea89d230ab94bbb |
| Specification Type | Legacy |
| Outer Case GTIN | 5060158952939 |



INGREDIENTS

Ingredient Declaration

Sugar, Fat Reduced Cocoa Powder, **WHEAT** Flour, Water, Rapeseed Oil, Dark Chocolate Chunks (11%) [Cocoa Mass (50%), Sugar, Emulsifier (**SOYA** Lecithin), Natural Vanilla Flavouring], Vegetable Fat (Palm), Whey Powder (**MILK**), Dextrose, **EGG** White Powder, Roasted **WHEAT** Malt Flour, Humectant (Glycerine), Raising Agents (E450, E500, E341), Emulsifier (E471), Salt, Thickener (Xanthan Gum).

ALLERGENS

Product Contains:

| | |
|--------------------------------------|-------------|
| Celery/Celeriac | No |
| Cereals Containing Gluten | Yes |
| Barley | May Contain |
| Oats | May Contain |
| Rye | No |
| Wheat (including Spelt and Khorasan) | Yes |
| Gluten content <20ppm | No |
| Crustacea | No |
| Eggs | Yes |
| Fish | No |
| Lupin | No |
| Milk | Yes |
| Molluscs | No |

| | |
|-------------------------------|-------------|
| Mustard | No |
| Nuts (Tree) | May Contain |
| Almond nuts | May Contain |
| Brazil nuts | No |
| Cashew nuts | No |
| Hazelnuts | May Contain |
| Macadamia (Queensland) nuts | No |
| Pecan nuts | May Contain |
| Pistachio nuts | May Contain |
| Walnuts | May Contain |
| Peanuts | May Contain |
| Sesame Seeds | No |
| Soybeans | Yes |
| Sulphur Dioxide and Sulphites | No |

Risk Source:

Additional Allergen Information

For allergens, including cereals containing gluten, see ingredients in BOLD. May contain peanuts, nuts and other gluten containing sources due to manufacturing methods.

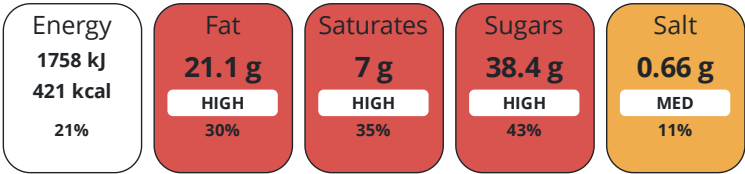
DIET
SUITABILITY

| | |
|-----------------------|----|
| Suitable for Coeliacs | No |
| Kosher Diet | No |
| Vegan Diet | No |

| | |
|-----------------|--------------|
| Halal Diet | No |
| Vegetarian Diet | Suitable for |

NUTRITIONAL
INFORMATION

Each 100g/ml portion contains:



of your reference intake.
Typical values per 100g/ml : Energy 421kcal / 1758kJ

| Nutrient | per 100g/ml | RI per 100g/ml |
|--------------------|-------------|----------------|
| Energy (kJ) | 1758 kJ | 21% |
| Energy (kcal) | 421 kcal | 21% |
| Fat | 21.1 g | 30% |
| of which Saturates | 7 g | 35% |
| Carbohydrate | 48.2 g | 19% |
| of which Sugars | 38.4 g | 43% |
| Protein | 5.7 g | 11% |
| Salt | 0.66 g | 11% |

HANDLING &
STORAGE
INFORMATION

Directions For Use

Ready to eat.

Storage Instructions

Store in a cool dry place out of direct sunlight and heat sources.

ORIGIN
CONTACT
INFORMATION

Product Country of OriginUnited Kingdom

Address

Love Handmade Cakes (Exquisite Handmade Cakes)
Unit 3, Cardigan Trading Estate
Lennox Road
Leeds
West Yorkshire
LS4 2BL
England

P: (Phone) 0113 2890283

Complaints Contact

Maria Ulfa
Technical Assistant
technical@lovehandmadecakes.com

P: (Phone) 0113 289 0283

Technical Contact

Anda Donina
Technical Manager
technical@lovehandmadecakes.com

P: (Phone) 0113 289 0283

Commercial Contact

Dale Dewhirst
Business Development Manager
dale@lovehandmadecakes.com

The information on the [Erudus System](#) has been supplied by the manufacturers of the products and, whilst the owners of the Erudus System take steps to ensure the information is regularly updated, they give no warranty and no guarantee that the information is accurate. Product information and ingredients may change, please always read product labels carefully in addition to using the information provided by Erudus.

We do not accept liability for any inaccuracies or incorrect information contained on this site.
Please visit <http://www.erudus.com/terms-and-conditions> for full terms and conditions.