

Changed Aug 21, 2024 12:17

Reviewed Aug 21, 2024 12:17

Erudus ID bd338d78f5184e8e8710ed0216e47448

Version 2.0

Status Published

GLUTEN FREE PRALINE CHOCOLATE BROWNIE RFA

Gluten Free Praline Chocolate Brownie Rfa 1x976g

PRODUCT DESCRIPTION

A rich vegan chocolate brownie topped with hazelnut pieces

Manufacturer Product Code	078361
Product Type	Food
Product Category	Cakes and Tarts
Storage Type	Frozen
Erudus ID	bd338d78f5184e8e8710ed0216e47448
Specification Type	Bakery Products



Outer Case GTIN 5060044078361



INGREDIENTS

Ingredient Declaration

Sugar, Water, Coconut Oil, Maize Starch, Dark Chocolate (10%) [Cocoa Mass, Sugar, Cocoa Butter, Emulsifier (SOYA Lecithin), Natural Vanilla Flavouring], Tapioca Starch, ALMONDS, Fat Reduced Cocoa Powder (3.5%), HAZELNUTS (3.0%), Gluten Free Flour (Rice, Potato, Tapioca, Maize, Buckwheat), Pea Protein, Praline Flavouring (0.1%).

ALLERGENS

Product Contains:

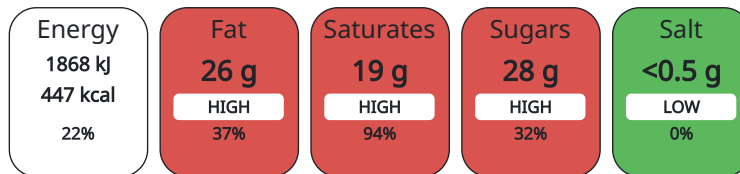
Celery/Celeriac	No	Mustard	No
Cereals Containing Gluten	No	Nuts (Tree)	Yes
Barley	No	Almond nuts	Yes
Oats	No	Brazil nuts	May Contain
Rye	No	Cashew nuts	May Contain
Wheat (including Spelt and Khorasan)	No	Hazelnuts	Yes
Crustacea	No	Macadamia (Queensland) nuts	May Contain
Eggs	May Contain	Pecan nuts	May Contain
Fish	No	Pistachio nuts	May Contain
Lupin	No	Walnuts	May Contain
Milk	May Contain	Peanuts	No
Molluscs	No	Sesame Seeds	No
		Soybeans	Yes
		Sulphur Dioxide and Sulphites	No

Risk Source:

DIET SUITABILITY

Vegan Diet	Suitable for	Vegetarian Diet	Suitable for
Halal Diet	No	Kosher Diet	No

Each 100g/ml portion contains:



of your reference intake.

Typical values per 100g/ml : Energy 447kcal / 1868kJ

Nutrient	per 100g	RI per 100g	per 65g serving	RI per 65g serving
Energy (kJ)	1868 kJ	22%	1214.2	14%
Energy (kcal)	447 kcal	22%	290.55	15%
Fat	26 g	37%	16.9 g	24%
of which Saturates	18.7 g	94%	12.16 g	61%
Carbohydrate	47.4 g	18%	30.81 g	12%
of which Sugars	28.4 g	32%	18.46 g	21%
Fibre	2.8 g		1.82 g	
Protein	4.2 g	8%	2.73 g	5%
Salt	0.02 g	0%	0.01 g	0%

Serving Size 65 g

Source of Nutritional Information Calculation from known/accepted datasets

Directions For Use

- Defrost in the plastic wrap at room temperature for 2 hours.
- Once defrosted, re-cut around the portions with a sharp knife.
- Remove portions gently from the tray, ideally using a flat cake slice.
- Once defrosted store in a cool place in an airtight container.
- Do not refreeze once defrosted.
- Consume within 5 days.

Storage Instructions

Keep Frozen - Store at -18°C

HANDLING &
STORAGE
INFORMATION

ORIGIN

Product Country of Origin United Kingdom

Origin of the Primary Ingredient

Address

The Handmade Cake Co.
The Bakery
Gardner Road
SL6 7TU
Maidenhead
Berkshire
United Kingdom

B.Kowalski@mdesserts.com
01628 770908

Technical

Technical Team
Maidenhead.Technical@mdesserts.com
01628 770908 Ext. 1052

Complaints

Technical Team
Maidenhead.Technical@mdesserts.com
01628 770908 Ext. 1052

CONTACT
INFORMATION

The information on the [Erudus System](#) has been supplied by the manufacturers of the products and, whilst the owners of the Erudus System take steps to ensure the information is regularly updated, they give no warranty and no guarantee that the information is accurate. Product information and ingredients may change, please always read product labels carefully in addition to using the information provided by Erudus.

We do not accept liability for any inaccuracies or incorrect information contained on this site.
Please visit <http://www.erudus.com/terms-and-conditions> for full terms and conditions.